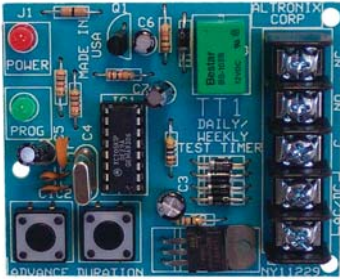


Overview



- TT1 daily/weekly test timer is suitable for most functions that require a timed operation e.g. Applications, tripping of digital communicator or radio transmitters to provide the central station with an alarm test signal, to comply in some cases with UL611.

Specifications

- | | |
|--|--|
| <ul style="list-style-type: none"> • 12 or 24 volt AC or DC operation. • Form “C” relay contacts are 2 amp at 120VAC. • Crystal controlled “real time” accuracy. • Adjustable relay on time 1 to 60 seconds. | <ul style="list-style-type: none"> • Selectable daily or weekly relay activation. • Program status verification. • Power on timing and program acknowledge LED. |
|--|--|

Board Dimensions (approximate)

3"L x 2.5"W x .75"H

Mounting Diagram

