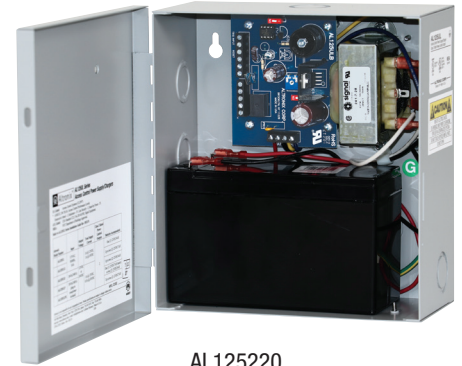


AL125220 Series

Power Supply/Chargers

Altronix AL125220 Series power-limited Power Supply/Chargers convert 220VAC (working range 198VAC - 256VAC) 50/60Hz input into two individually PTC protected 12VDC or 24VDC outputs (see specifications). They are intended for use in Access Control and applications requiring an interface with Fire Alarm Control Panels.



AL125220

Key Features

- Two (2) 12VDC or 24VDC Power-Limited Outputs
- Built-in charger for sealed lead acid or gel type batteries
- Instantaneous transfer to stand-by batteries
- Short circuit and overload protection
- AC input and unit status indicator on the front panel
- Normally Open [NO] trigger input
- Supervised Fire Alarm Disconnect (Latching with reset or Non-Latching)
- Lifetime Warranty

AL125220 Series Power Supply Configuration Reference Chart

Altronix Model Number	Input Rating	12VDC Max. Stand-By Load	12VDC Max. Alarm Load	24VDC Max. Stand-By Load	24VDC Max. Alarm Load	Stand-By Specifications (4 hr. of Stand-by and 5 min. of Alarm)		Accommodates Batteries
						12VDC or 24VDC 4AH Battery	12VDC or 24VDC 7AH Battery	
AL125220	220VAC, 50/60Hz, 0.3A	1A	1A	1A	1A	0.5A / 1A	1A / 1A	One (1) 12VDC/7AH or two (2) 12VDC/4AH
AL125X220								One (1) 12VDC/7AH or two (2) 12VDC/4AH

Lifetime Warranty



AL125220 Series

Power Supply/Chargers

Specifications

Input

Voltage 220VAC (working range 198VAC - 256VAC)
50/60Hz, 0.3A

Outputs

Voltage 12VDC or 24VDC selectable
Current 1A power-limited continuous max.
Protection PTC
Other Filtered and regulated

Battery Charging

Capacity Varies, See Reference Chart
Type Sealed lead acid or gel type
Failover Upon AC loss, instantaneous
Batteries are sold separately

Indicator (LED)

Unit Status Normal/No Output/Loss of AC/Triggered

Physical and Environmental

Dimensions (H x W x D) and Description

AL125220 (power supply, transformer, cam lock, and enclosure):

Enclosure: 8.5" x 7.5" x 3.5" (215.9mm x 190.5mm x 88.9mm)

Shipping: 13" x 10" x 7" (330.2mm x 254mm x 177.8mm)

AL125X220 (power supply, transformer, cam lock, and enclosure):

Enclosure: 13.5" x 13" x 3.25" (342.9mm x 330.2mm x 82.6mm)

Shipping: 15" x 13.875" x 4.75" (381mm x 352.4mm x 120.6mm)

Enclosure accommodates up to two (2) 12VDC/7AH batteries

Weight (approx.)

Model	Product Weight	Shipping Weight
AL125220	5.1 lb. (2.31 kg)	5.6 lb. (2.54 kg)
AL125X220	9.5 lb. (4.31 kg)	10.4 lb. (4.72 kg)

Temperature

Operating: 0°C to 49°C (32°F to 120°F).
Storage: -20°C to 70°C (-4°F to 158°F).

Relative Humidity 85% +/- 5%.

BTU/Hr. (approx.)

12VDC: 6 BTU/Hr.
24VDC: 6 or 12 BTU/Hr.

Lifetime Warranty

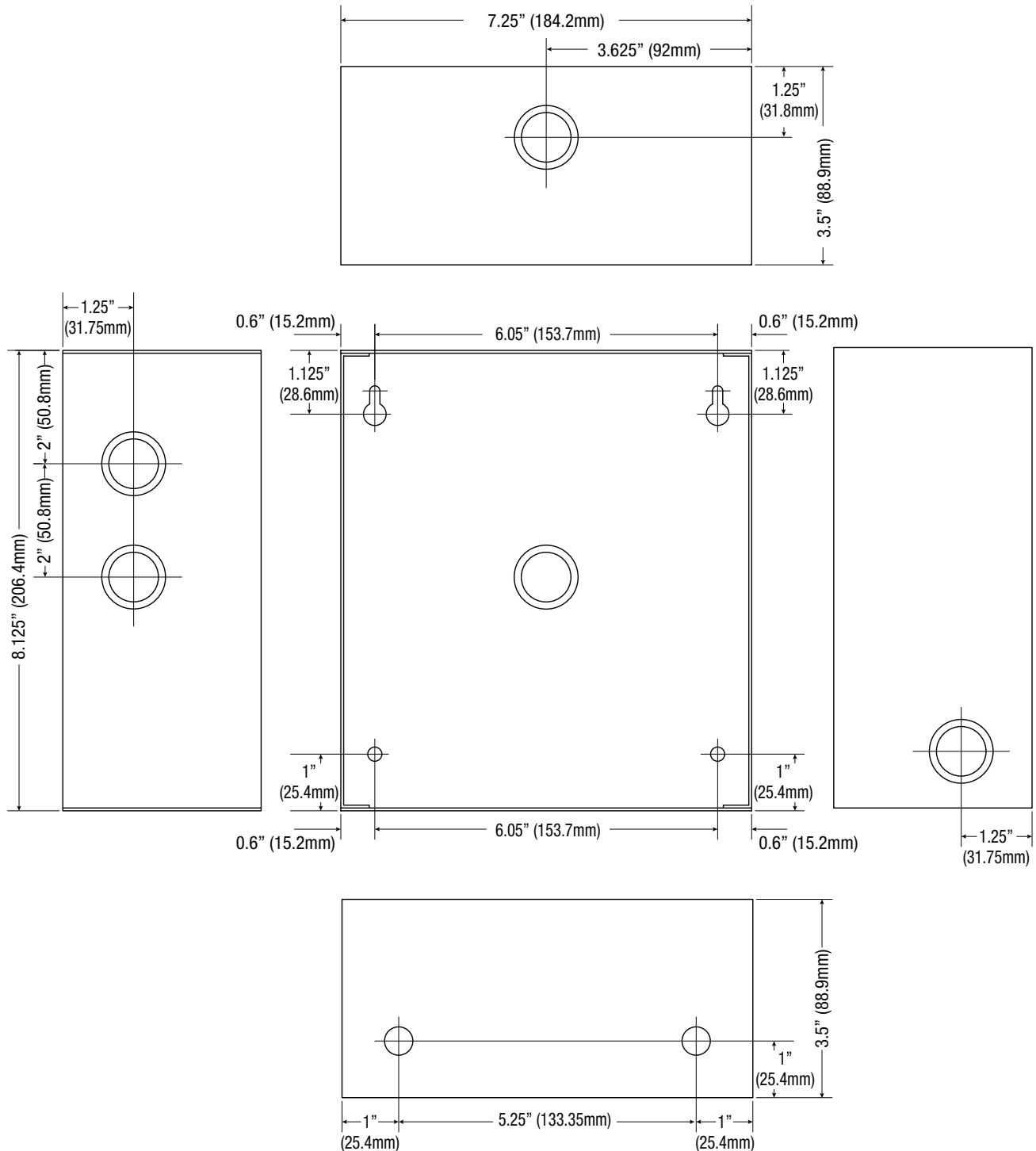
Altronix Corporation | 140 58th St | Brooklyn, NY 11220 USA

phone: +1 718.567.8181 | fax: +1 718.567.9056 | email: info@altronix.com | www.altronix.com

Dimensions and Drawing

AL125220 Dimensions (H x W x D approximate)

8.5" x 7.5" x 3.5" (215.9mm x 190.5mm x 88.9mm)



Lifetime Warranty

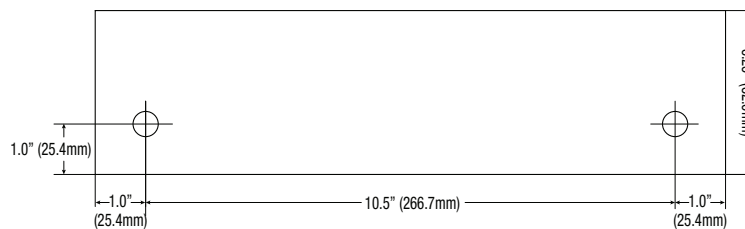
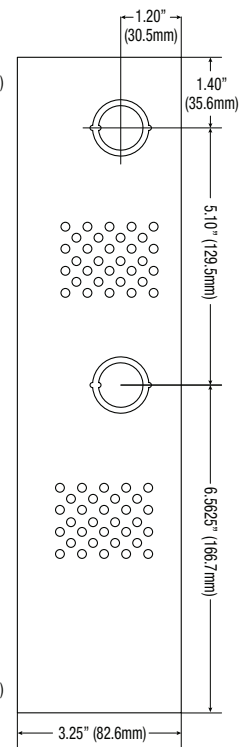
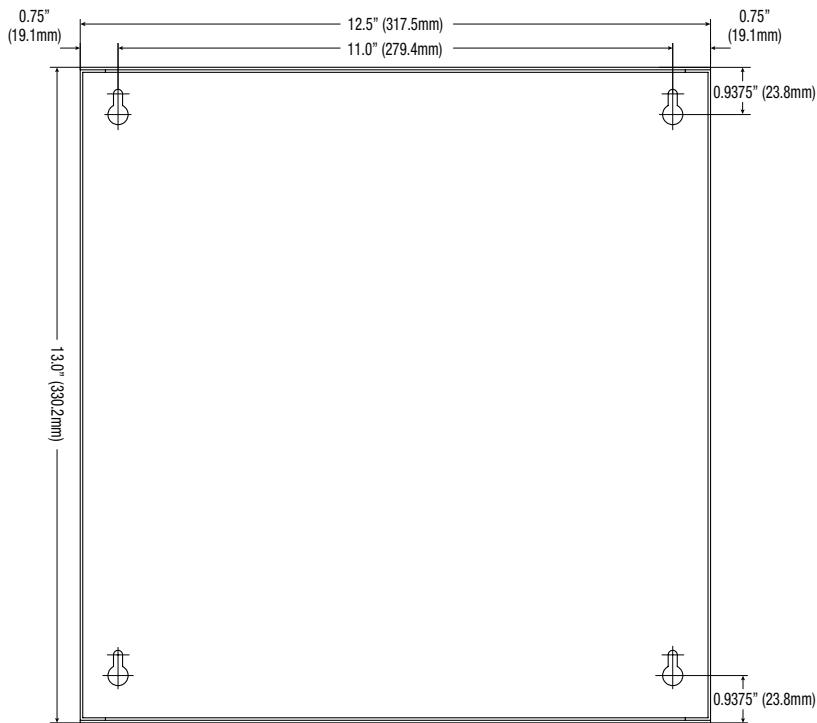
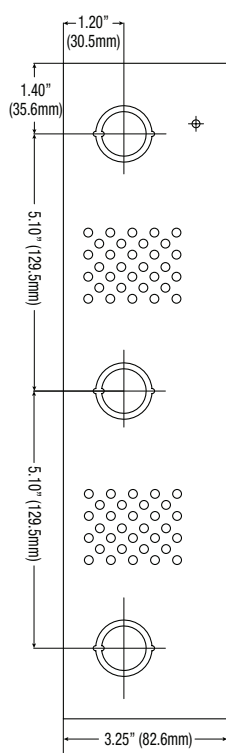
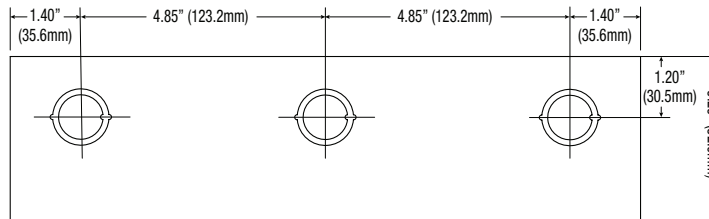
Altronix Corporation | 140 58th St | Brooklyn, NY 11220 USA

phone: +1 718.567.8181 | fax: +1 718.567.9056 | email: info@altronix.com | www.altronix.com

Dimensions and Drawing

AL125X220 Dimensions (H x W x D approximate)

13.5" x 13" x 3.25" (342.9mm x 330.2mm x 82.6mm)



Lifetime Warranty

Altronix Corporation | 140 58th St | Brooklyn, NY 11220 USA

phone: +1 718.567.8181 | fax: +1 718.567.9056 | email: info@altronix.com | www.altronix.com