

# ALTV1224DC Series

## DC CCTV Power Supplies

Altronix ALTV1224DC Series DC CCTV power supplies provide 12VDC or 24VDC distributed via eight (8) or sixteen (16) fused or PTC protected outputs with a total of 4A or 6A continuous supply current for powering CCTV cameras, heaters, and other video accessories.



ALTV1224DC

### Key Features

- Eight (8) or sixteen (16) fuse or PTC protected outputs
- 12VDC or 24VDC selectable voltage
- 4A or 6A supply current
- Surge protection
- AC Input and DC Output LEDs
- Power ON/OFF switch
- Spare fuses provided (all models with primary and/or secondary fuses)
- CE European Conformity
- Lifetime Warranty

### ALTV1224DC Series Power Supply Configuration Reference Chart

Altronix Model Number	115VAC, 50/60Hz Input Current	Total Output Current (Power)	Output Current (max per output)	Number of Outputs	PTC Protected Outputs (auto-resettable)	Fuse Protected Outputs
ALTV1224DC	1.45A	4A	3.5A	8	-	✓
ALTV1224DCCB			2.5A		✓	-
ALTV1224DC1			3.5A	16	-	✓
ALTV1224DC1CB			2.5A		✓	-
ALTV1224DC2	2.5A	6A	3.5A	16	-	✓
ALTV1224DC2CB			2.5A		✓	-

#### Lifetime Warranty



# ALTV1224DC Series

DC CCTV Power Supplies

## Specifications

### Input

Voltage 115VAC, 50/60Hz

### Outputs

Voltage 12VDC or 24VDC selectable

Current Varies, see Reference Chart

Protection Fused 3.5A / PTC 2.5A

### Indicators (LED)

Input 115VAC is present

Output DC output is powered

### Battery Charging

Capacity 12AH/7VDC (2 within enclosure)  
40AH/65AH (requires separate enclosure)

Type Sealed lead acid or gel type

Failover Upon AC loss, instantaneous

Batteries are sold separately

### Agency Listings

CE European Conformity

## Physical and Environmental

### Dimensions (H x W x D)

Enclosure:

13.5" x 13" x 3.25" (342.9mm x 330.2mm x 82.6mm)

Shipping:

15" x 13.875" x 4.75" (381mm x 352.4mm x 120.6mm)

### Weight (approx.)

Model	Product Weight	Shipping Weight
ALTV1224DC(CB)	7.8 lb. (3.54 kg)	8.7 lb. (3.95 kg)
ALTV1224DC1(CB)	7.9 lb. (3.58 kg)	8.8 lb. (3.99 kg)
ALTV1224DC2(CB)	7.9 lb. (3.58 kg)	8.8 lb. (3.99 kg)

### Temperature

Operating: 0°C to 49°C (32°F to 120°F)

Storage: - 20°C to 70°C (- 4°F to 158°F)

Relative Humidity 85% +/- 5%

### BTU/Hr. (approx.)

Model	12VDC	24VDC
ALTV1224DC(CB)	25	49
ALTV1224DC1(CB)		
ALTV1224DC2(CB)	37	75

### Lifetime Warranty

Altronix Corporation | 140 58th St | Brooklyn, NY 11220 USA

phone: +1 718.567.8181 | fax: +1 718.567.9056 | email: info@altronix.com | www.altronix.com



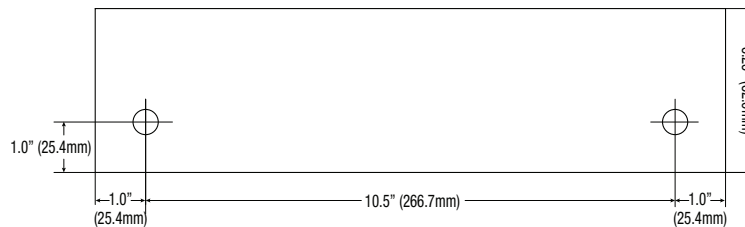
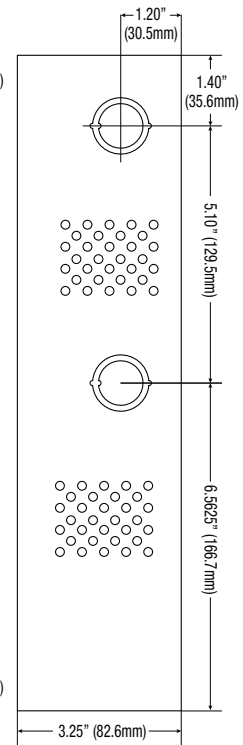
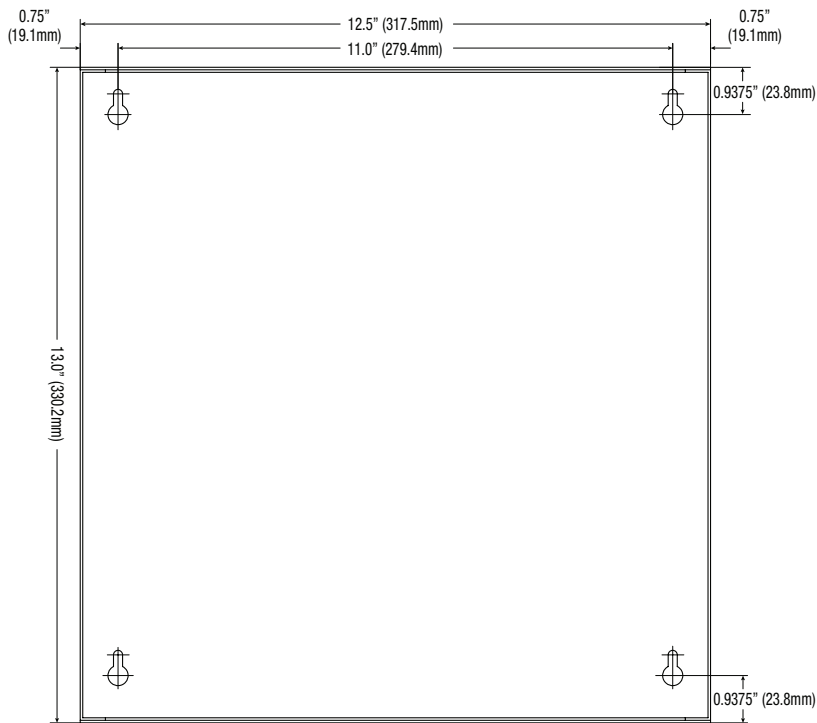
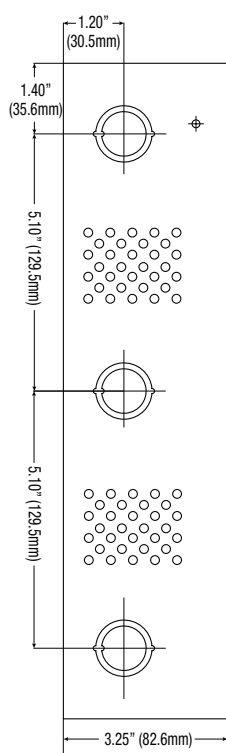
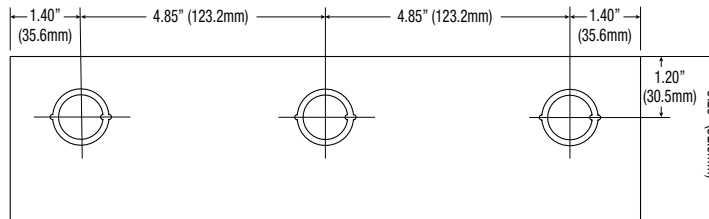
# ALTV1224DC Series

DC CCTV Power Supplies

## Dimensions and Drawing

Dimensions (H x W x D approximate)

13.5" x 13" x 3.25" (342.9mm x 330.2mm x 82.6mm)



### Lifetime Warranty

Altronix Corporation | 140 58th St | Brooklyn, NY 11220 USA

phone: +1 718.567.8181 | fax: +1 718.567.9056 | email: info@altronix.com | www.altronix.com