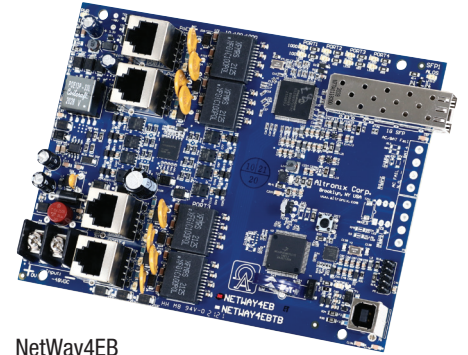


# NetWay4EB

## 4-port PoE+ Hardened Switch Board



Altronix NetWay4EB PoE+ Switch provides a 1Gb SFP port and four (4) PoE+ (30W) ports. Cameras/edge devices may be located up to 100m from the unit. Embedded LINQ Technology allows you to monitor, control, and report power and diagnostics from anywhere.



NetWay4EB

### Key Features

- Four (4) 10/100/1000 Mbps PoE/PoE+ (up to 30W) ports
- External 48-56V UL Listed ITE power supply required
- IEEE 802.3af (15W) and IEEE 802.3at (30W) compliant
- 120W total power
- One (1) Gigabit SFP port
- PoE activity LED indicators
- Mounting hardware included
- CE European Conformity
- Lifetime Warranty

### Similar products

<b>NetWay4EWPX</b>	Outdoor 4-port PoE+ Hardened Switch in NEMA 4/4X, IP66-11 enclosure which accommodates stand-by batteries
<b>NetWay4EWP</b>	Outdoor 4-port PoE+ Hardened Switch in NEMA 4/4X, IP66-11 enclosure
<b>NetWay4EWPN</b>	Outdoor 4-port PoE+ Hardened Switch only in NEMA 4/4X, IP66-11 enclosure
<b>NetWay4EX</b>	Indoor 4-port PoE+ Hardened Switch in NEMA 1 Rated indoor enclosure
<b>NetWay4EPL</b>	4-port PoE+ Hardened Switch with Integral Power on a Backplane

#### Lifetime Warranty

### Specifications

**Input**  
Voltage 48V-56V (UL Listed ITE power supply)

**Power Output**  
Maximum Power Four (4) 10/100/1000 Mbps PoE/PoE+ (up to 30W) ports IEEE 802.3at (30W) and IEEE 802.3af (15W) compliant 120W total power Integral surge protection.

**Fiber Port:** One (1) Gigabit SFP port

### LINQ Technology:

Remote network management allows for camera/device reset and monitoring  
Provides local and/or remote access to critical information via LAN/WAN  
Email and Windows Dashboard Alert notifications report real-time diagnostics  
Event log tracks history

### Indicators (LED)

Individual PoE On LEDs for each port  
Individual IP Link status, 10/100Base-T/active LEDs for each port  
ALOS LED indicates fiber connection for SFP port  
Heartbeat LED indicates proper operation of the unit

### Agency Listings

CE European Conformity

### Physical and Environmental

#### Dimensions (L x W x H)

Board: 6.25" x 4.5" x 1.0" (158.8mm x 114.3mm x 25.4mm)  
Shipping: 13" x 10" x 6" (330.2mm x 254mm x 152.4mm)

#### Weight (approx.)

Product: 0.7 lb. (0.32 kg)  
Shipping: 0.8 lb. (0.36 kg)

#### Temperature

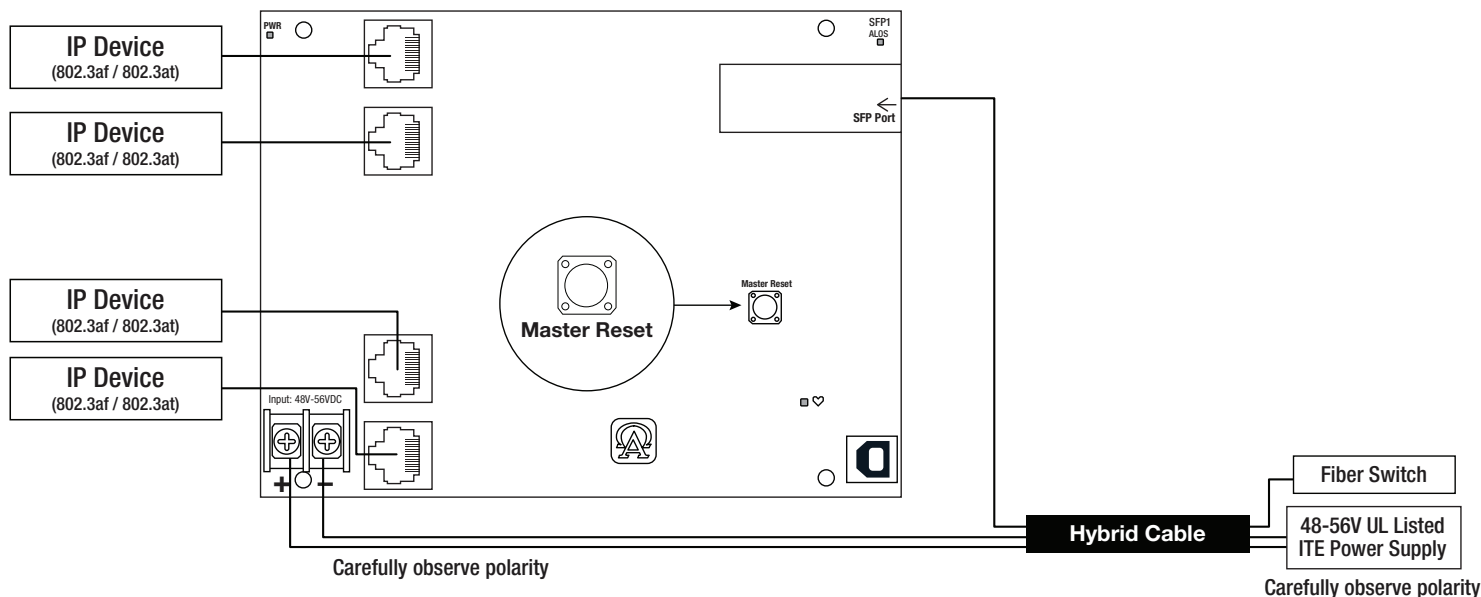
Operating (120W): -40°C to 75°C (-40°F to 167°F)  
Storage: -40°C to 85°C (-40°F to 185°F)

Relative Humidity 85% +/- 5%

Operating Altitude: -304.8 to 2,000m

Mounting hardware included

### Typical Application



### Lifetime Warranty

## NetWay4EB

4-port PoE+ Hardened Switch Board



### Power Sourcing Equipment and Accessories (order separately)



4-port Ethernet over Fiber Media Converters for Applications Utilizing Composite or Conventional Cabling

- NetWaySP4** Unit passes a maximum power up to 120W per port (240W total power) from a Power Supply or Midspan Injector. Four (4) 1Gb SFP ports.
- NetWaySP4P** Unit provides a maximum power up to 120W per port (240W total power) from a built-in Power Supply/ Charger. Four (4) 1Gb SFP ports.
- NetWaySP4P2** Unit provides 56VDC power-limited 60W max. per port (240W total power) from a built-in Power Supply/Charger. Four (4) 1Gb SFP ports.



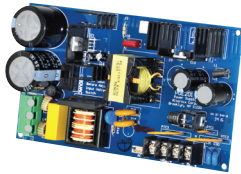
#### SFP Modules - Hot Pluggable Transceivers

- P1MM** Multi-Mode SFP Module for distances up to 550m
- P1SM10** Single-Mode SFP Module for distances up to 10km
- P1AB2K** Single Strand SFP Module for distances up to 2km
- P1GCE** Copper SFP Module for distances up to 100m



#### NetWaySP1A

Ethernet over Fiber Media Converter/Repeater for Applications Requiring an Additional SFP (Fiber) Port  
NetWaySP1A PoE powered media converter/repeater converts 10/100/1000 Mbps to Fiber (1000Base-X/SX/LX).



#### PoE Power Supplies

##### POE60 - 75W Power Supply/Lithium Iron Phosphate Charger

Provides 75W for NetWay Spectrum switches.  
It also features a built-in charger for Lithium Iron Phosphate batteries.

##### POE201 - 120W Power Supply/Charger

Provides 120W for NetWay Spectrum switches.  
It also features a built-in charger for sealed lead acid or gel type batteries.

#### Lifetime Warranty