

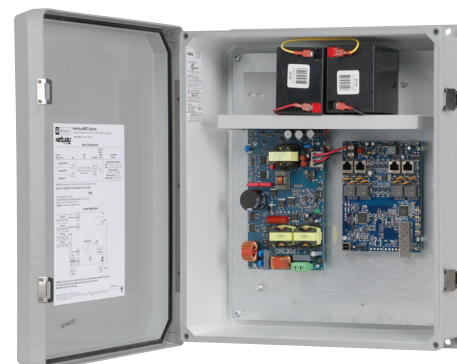
NetWay4EBTWPX3

4-port Outdoor Hardened 4PPoE (802.3bt) Switch with Integral Power



Altronix NetWay4EBTWPX3 supports up to 90W per port (360W total power) for deploying the latest high-powered IP devices in remote locations. It is equipped with one (1) 1Gb SFP port to transmit data at long distances and four (4) 802.3bt compliant Ethernet ports. NetWay4EBTWPX3 accommodates single/multi-mode fiber cable to deliver data from NetWay Spectrum head-end media converters/injectors. Embedded LINQ Technology allows to monitor, control, and report power and diagnostics from anywhere.

For unmanaged switch see model NetWay4E1BTWPX3



NetWay4EBTWPX3

Key Features

- Four (4) 10/100/1000 Mbps Ethernet ports rated at 90W each (limited to 360W total power)
- IEEE 802.3af, 802.3at, 802.3bt compliant
- One (1) Gigabit SFP port
- VLAN (Virtual Local Area Networks) subnetwork allows for the grouping together of devices for improved network traffic and higher security
- Built-in charger for sealed lead acid or gel type batteries
- CE European Conformity
- NEMA 4/4X, IP66-11 enclosure accommodates batteries
- LINQ Technology:
 - Remote network management allows for camera/device reset and diagnostic monitoring
 - Provides local and/or remote access to critical information via LAN/WAN
 - Email and Windows Dashboard Alert notifications report real-time events
 - Event log tracks history

Similar products

NetWay4EBTWP	Outdoor 4-port Hardened 4PPoE Switch with Integral Power in NEMA 4/4X, IP66-11 enclosure
NetWay4EBTX	4-port Hardened 4PPoE Switch with Integral Power in NEMA 1 Rated indoor enclosure
NetWay4EBTPL	4-port Hardened 4PPoE Switch on a Backplane

Lifetime Warranty

NetWay4EBTWPX3

4-port Outdoor Hardened 4PPoE (802.3bt) Switch with Integral Power

Specifications**Input**

Voltage	115VAC, 60Hz, 3.5A or 230VAC, 50/60Hz, 2A
Input Fuse	5A/250V

Power Output

Maximum Power	Four (4) PoE ports rated at 90W each, 360W total power IEEE 802.3af (15W), IEEE 802.3at (30W), IEEE 802.3bt (90W) compliant Integral surge protection
---------------	---

SFP Ports: One (1) Gigabit SFP port**Ethernet Ports:** Four (4) 10/100/1000 Mbps ports.
Connectivity: RJ45, auto-crossover
Wire type: 4-pair CAT5e or higher
structured cable
Speed: 10/100/1000 Mbps,
half/full duplex, auto negotiation**Battery Charging**

Type	48VDC charging circuit charges sealed lead acid or gel type batteries (within enclosure, ventilation is required)
------	--

Failover Upon AC loss, instantaneous
Batteries are sold separately**Indicators (LED)**

Individual PoE On LEDs for each port
Individual IP Link status, 10/100/1000 Base-T/active LEDs for
each port
ALOS LED indicates fiber connection for SFP port
Heartbeat LED indicates proper operation of the unit

VLAN:

Multiple management VLAN assignment
802.1Q Tagged VLAN
Up to 10 VLAN groups. ID Range 2-4095

LINQ Technology:

Remote network management allows for camera/device reset
and diagnostic monitoring
Provides local and/or remote access to critical information via
LAN/WAN
Email and Windows Dashboard Alert notifications report
real-time events
Event log tracks history

Agency Listings

CE European Conformity

Physical and Environmental**Dimensions (H x W x D)**

Enclosure:	17.53" x 15.3" x 6.67" (445.3mm x 388.6mm x 169.4mm)
Shipping:	21.375" x 14.5" x 9.5" (542.9mm x 374.7mm x 241.3mm)

NEMA 4/4X, IP66-11 Rated enclosure for outdoor use
Accommodates four (4) 12VDC/4AH batteries (48V of backup)

Weight (approx.)

Product:	15 lb. (6.8 kg)
Shipping:	17.5 lb. (7.9 kg)

Temperature

360W:	- 30°C to 70°C (- 22°F to 158°F)
240W:	- 30°C to 75°C (- 22°F to 167°F)
Storage	- 30°C to 85°C (- 22°F to 185°F)

Relative Humidity 85% +/- 5%**BTU/Hr (approx.)** 183 BTU/Hr.**Operating Altitude:** - 304.8 to 2,000m**Lifetime Warranty**

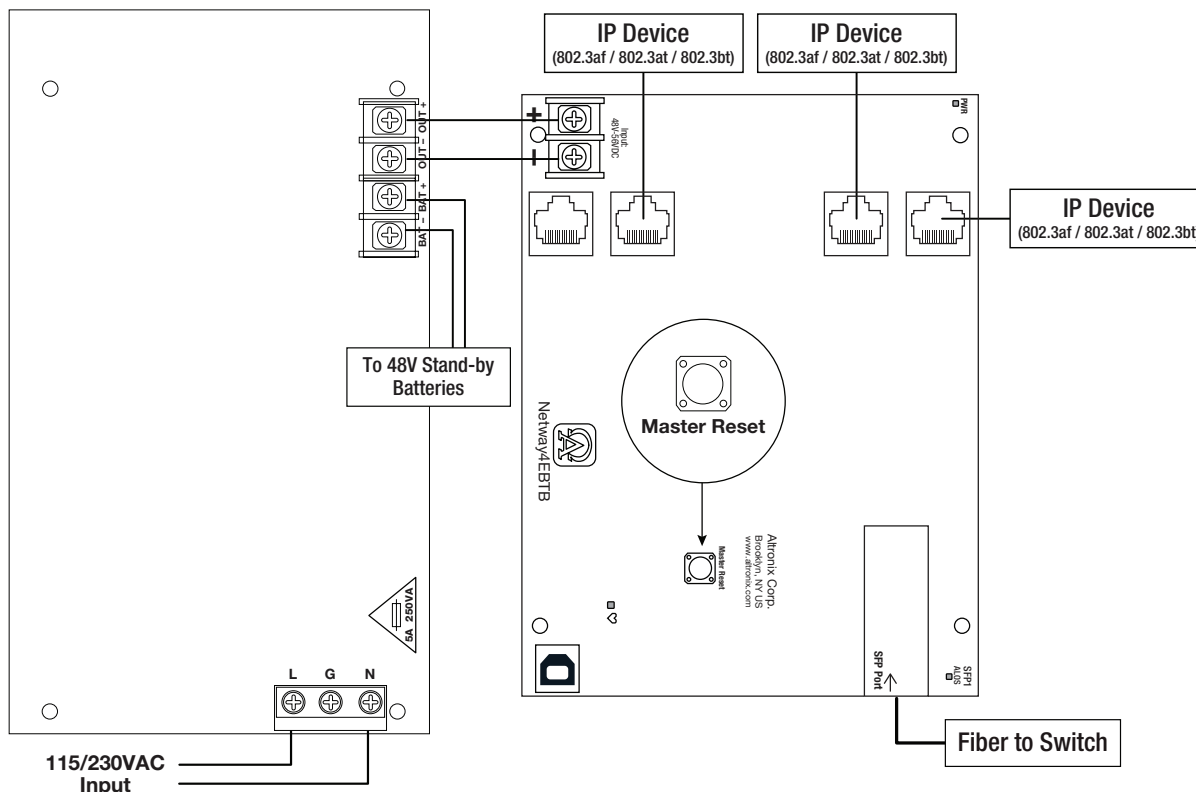
Altronix Corporation | 140 58th St | Brooklyn, NY 11220 USA

phone: +1 718.567.8181 | fax: +1 718.567.9056 | email: info@altronix.com | www.altronix.com

NetWay4EBTWPX3

4-port Outdoor Hardened 4PPoE (802.3bt) Switch with Integral Power

Typical Application



Accessories (order separately)



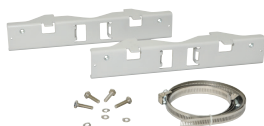
SFP Modules - Hot Pluggable Transceivers

P1MM	Multi-Mode SFP Module for distances up to 550m
P1SM10	Single-Mode SFP Module for distances up to 10km
P1AB2K	Single Strand SFP Module for distances up to 2km
P1GCE	Copper SFP Module for distances up to 100m



NetWaySP1A

Ethernet over Fiber Media Converter/Repeater for Applications Requiring an Additional SFP (Fiber) Port
NetWaySP1A PoE powered media converter/repeater converts 10/100/1000 Mbps to Fiber (1000Base-X/SX/LX).



PMK2 - Pole Mount Kit

PMK2 pole mount kit is designed to simplify installation of outdoor units. It accommodates 2" - 8" (diameter) poles.



Vent2 - Air Vents For NEMA4/4X Rated Enclosures

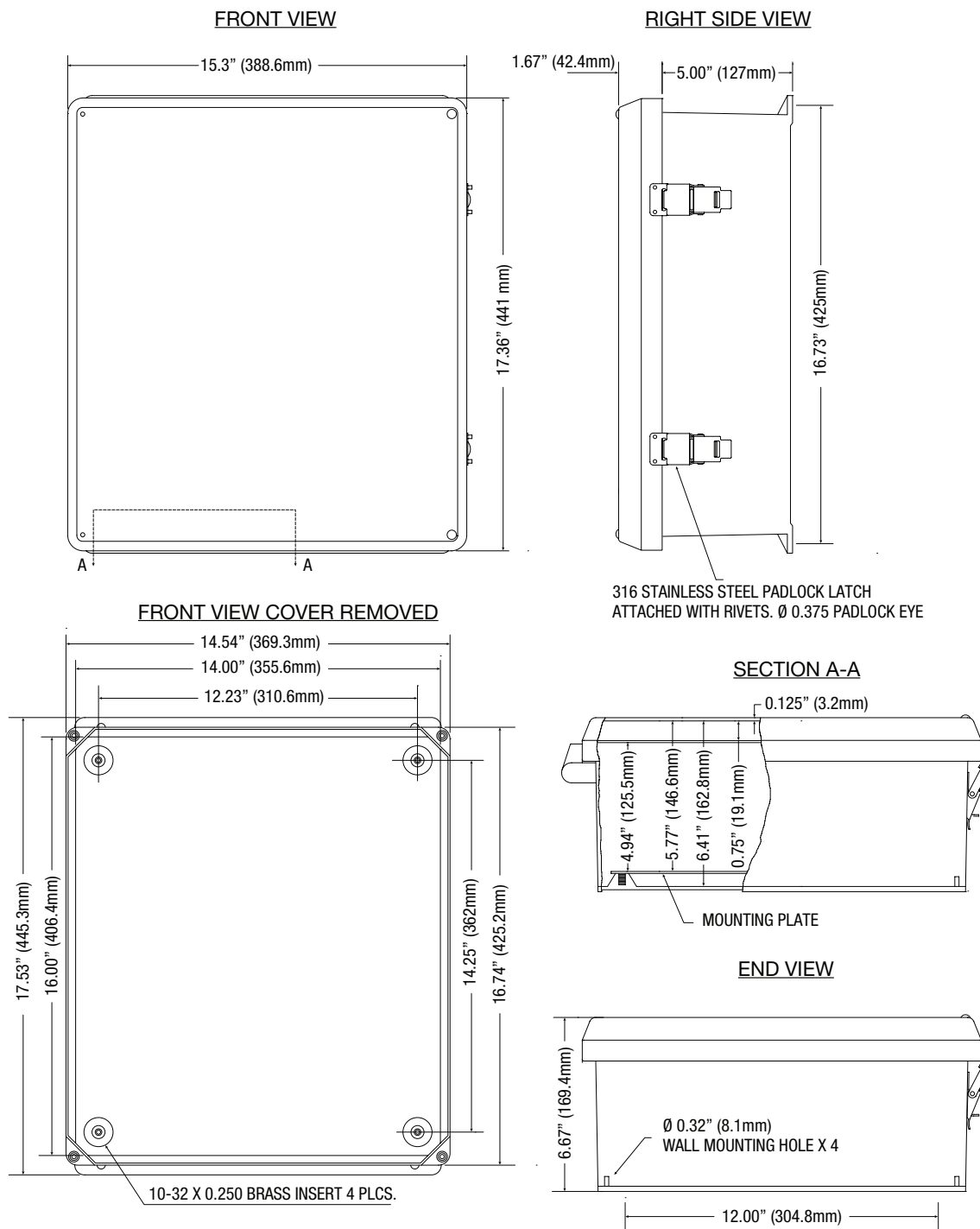
Altronix Vent2 air vents ensure efficient air circulation and prevent water condensation in NEMA4/4X Rated Enclosures. Pair of air vents must be mounted per enclosure.

Lifetime Warranty

Dimensions and Drawing

Dimensions (H x W x D approximate)

17.53" x 15.3" x 6.67" (445.3mm x 388.6mm x 169.4mm)



Lifetime Warranty

Altronix Corporation | 140 58th St | Brooklyn, NY 11220 USA

phone: +1 718.567.8181 | fax: +1 718.567.9056 | email: info@altronix.com | www.altronix.com