

# NetWaySP3WPN

## 3-port Outdoor Hardened PoE Switch



Altronix NetWaySP3WPN Outdoor PoE+ Hardened Switch provides a 1Gb SFP port and two (2) PoE+/ Hi-PoE (60W) ports. Cameras/edge devices may be located up to 100m from the unit. Embedded LINQ Technology allows you to monitor, control and report power and diagnostics via the network from anywhere.



NetWaySP3WPN

### Key Features

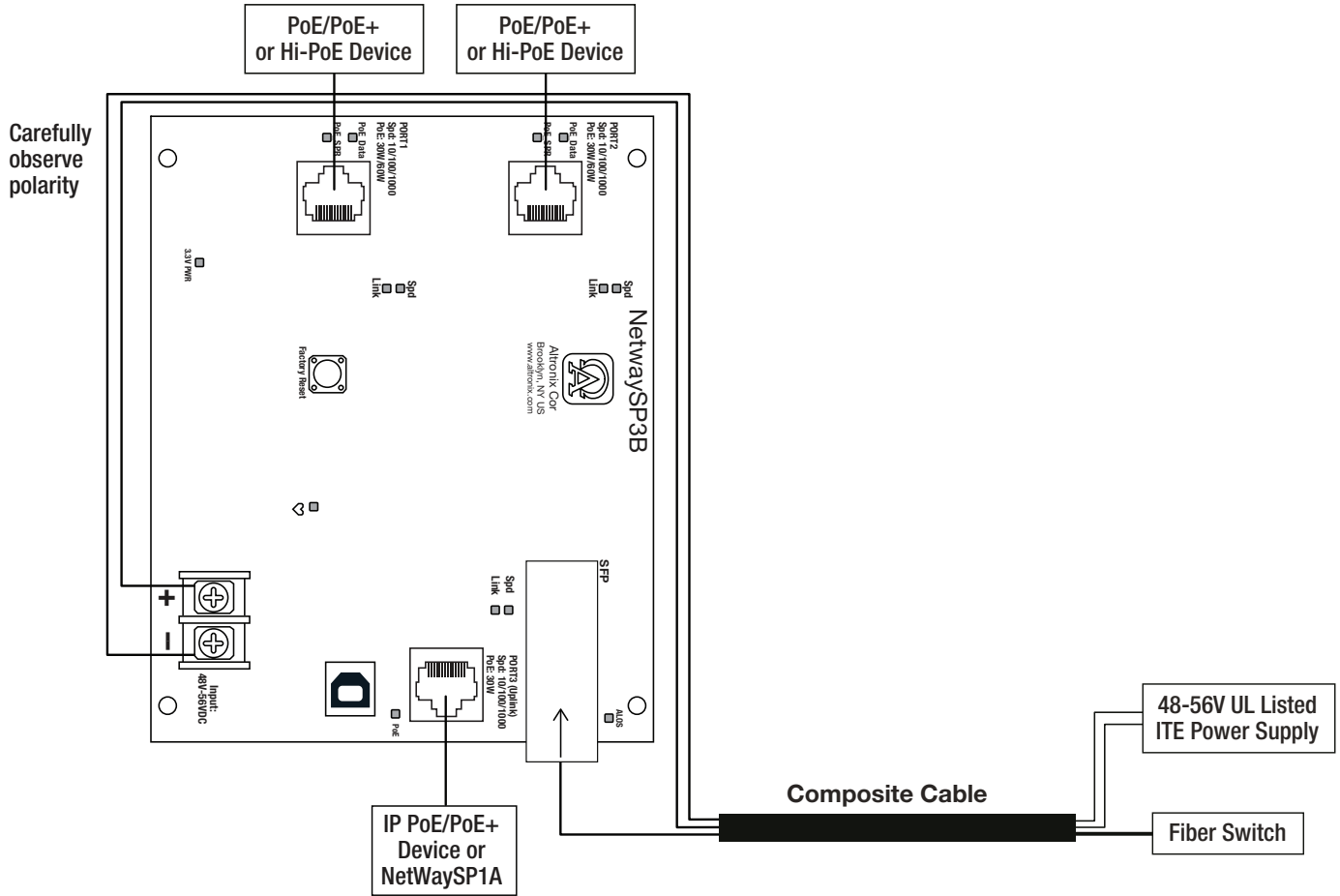
- One (1) Gigabit SFP port
- 120W total power:
  - Two (2) 60W ports (PoE/PoE+ / Hi-PoE)
  - One (1) 30W port (PoE/PoE+)
- 10/100/1000 Mbps each port
- IEEE 802.3at (30W), IEEE 802.3af (15W) compliant, or Hi-PoE (60W)
- PoE activity LED indicators
- NEMA4/4X, IP66 Rated enclosure for outdoor use
- UL Listed in the U.S. and Canada
- CE European Conformity
- Lifetime Warranty

### Similar products

<b>NetWaySP3WPX</b>	Outdoor 3-port PoE+ Hardened Switch in NEMA 4/4X, IP66-11 enclosure which accommodates stand-by batteries
<b>NetWaySP3WP</b>	Outdoor 3-port PoE+ Hardened Switch in NEMA 4/4X, IP66-11 enclosure
<b>NetWaySP3X</b>	Indoor 3-port PoE+ Hardened Switch in NEMA 1 Rated indoor enclosure
<b>NetWaySP3PL</b>	3-port PoE+ Hardened Switch with Integral Power on a Backplane
<b>NetWaySP3B</b>	3-port PoE+ Hardened Switch (board only)

#### Lifetime Warranty

### Typical Composite (Fiber + Copper) Application



#### Lifetime Warranty

Altronix Corporation | 140 58th St | Brooklyn, NY 11220 USA

phone: +1 718.567.8181 | fax: +1 718.567.9056 | email: info@altronix.com | www.altronix.com

### Specifications

#### Input

**Voltage** 48-56V UL Listed ITE power supply (up to 120W)

#### Power Output

**Maximum Power** 120W total power:  
Two (2) 60W ports (PoE/PoE+/Hi-PoE)  
One (1) 30W port (PoE/PoE+)  
10/100/1000 Mbps each port  
IEEE 802.3at (30W),  
IEEE 802.3af (15W) or Hi-PoE (60W)  
compliant,  
Integral surge protection

**Fiber Ports:** One (1) Gigabit SFP port

**Ethernet Ports:** Three (3) 10/100/1000 Mbps ports  
Connectivity: RJ45, auto-crossover  
Wire type: 4-pair CAT5 or better structured cable  
Distance: up to 100m  
Speed: 10/100/1000 Mbps, half/full duplex, auto negotiation

#### Indicators (LED)

Individual PoE On LEDs for each port  
Individual IP Link status, 10/100Base-T/active LEDs for each port  
ALOS LED indicates fiber connection for SFP port  
Heartbeat LED indicates proper operation of the unit

#### LINQ Technology:

Remote network management allows for camera/device reset and monitoring  
Provides local and/or remote access to critical information via LAN/WAN  
Email and Windows Dashboard Alert notifications report real-time diagnostics  
Event log tracks history

#### Agency Listings

**UL/cUL** UL60950-1 (Information Technology Equipment)  
UL60950-22 (Information Technology Equipment to be installed Outdoors)  
**CE** European Conformity

#### Physical and Environmental

##### Dimensions (H x W x D)

**Enclosure:** 13.31" x 11.31" x 5.59"  
(338.1mm x 287.3mm x 142mm)  
**Shipping:** 20.25" x 12.5" x 7.25"  
(514.4mm x 317.5mm x 184.2mm)

NEMA 4/4X, IP66-11 Rated enclosure for outdoor use

##### Weight (approx.)

**Product:** 7.7 lb. (3.49 kg)  
**Shipping:** 10.0 lb. (4.54 kg)

##### Temperature

**Operating (120W):** - 40°C to 75°C (- 40°F to 167°F)  
**Storage:** - 40°C to 85°C (- 40°F to 185°F)

**Relative Humidity** 85% +/- 5%

**Operating Altitude:** - 304.8 to 2,000m

#### Lifetime Warranty

# NetWaySP3WPN

3-port Outdoor Hardened PoE Switch



## Power Sourcing Equipment and Accessories (order separately)



- 4-port Ethernet over Fiber Media Converters for Applications Utilizing Composite or Conventional Cabling**
- NetWaySP4** Unit passes a maximum power up to 120W per port (240W total power) from a Power Supply or Midspan Injector. Four (4) 1Gb SFP ports.
  - NetWaySP4P** Unit provides a maximum power up to 120W per port (240W total power) from a built-in Power Supply/ Charger. Four (4) 1Gb SFP ports.
  - NetWaySP4P2** Unit provides 56VDC power-limited 60W max. per port (240W total power) from a built-in Power Supply/Charger. Four (4) 1Gb SFP ports.



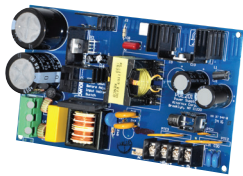
### SFP Modules - Hot Pluggable Transceivers

- P1MM** Multi-Mode SFP Module for distances up to 550m
- P1SM10** Single-Mode SFP Module for distances up to 10km
- P1AB2K** Single Strand SFP Module for distances up to 2km
- P1GCE** Copper SFP Module for distances up to 100m



### NetWaySP1A

**Ethernet over Fiber Media Converter/Repeater for Applications Requiring an Additional SFP (Fiber) Port**  
 NetWaySP1A PoE powered media converter/repeater converts 10/100/1000 Mbps to Fiber (1000Base-X/SX/LX).



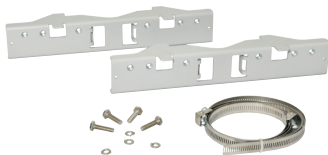
### PoE Power Supplies

#### POE60 - 75W Power Supply/Lithium Iron Phosphate Charger

Provides 75W for NetWay Spectrum switches.  
 It also features a built-in charger for Lithium Iron Phosphate batteries.

#### POE201 - 120W Power Supply/Charger

Provides 120W for NetWay Spectrum switches.  
 It also features a built-in charger for sealed lead acid or gel type batteries.



### PMK1 - Pole Mount Kit

PMK1 pole mount kit is designed to simplify installation of outdoor units.  
 It accommodates 2" - 8"(diameter) poles.

### Lifetime Warranty

