

# NetWaySP41WPN

## 4-port Outdoor Hardened PoE Switch

Altronix NetWaySP41WPN Outdoor PoE+ Hardened Switch provides two (2) 1Gb SFP (Fiber) ports and four (4) PoE+ (30W) ports, passing data for PoE/PoE+ compliant devices. Cameras/ edge devices may be located up to 100m from the unit.



NetWaySP41WPN

### Key Features

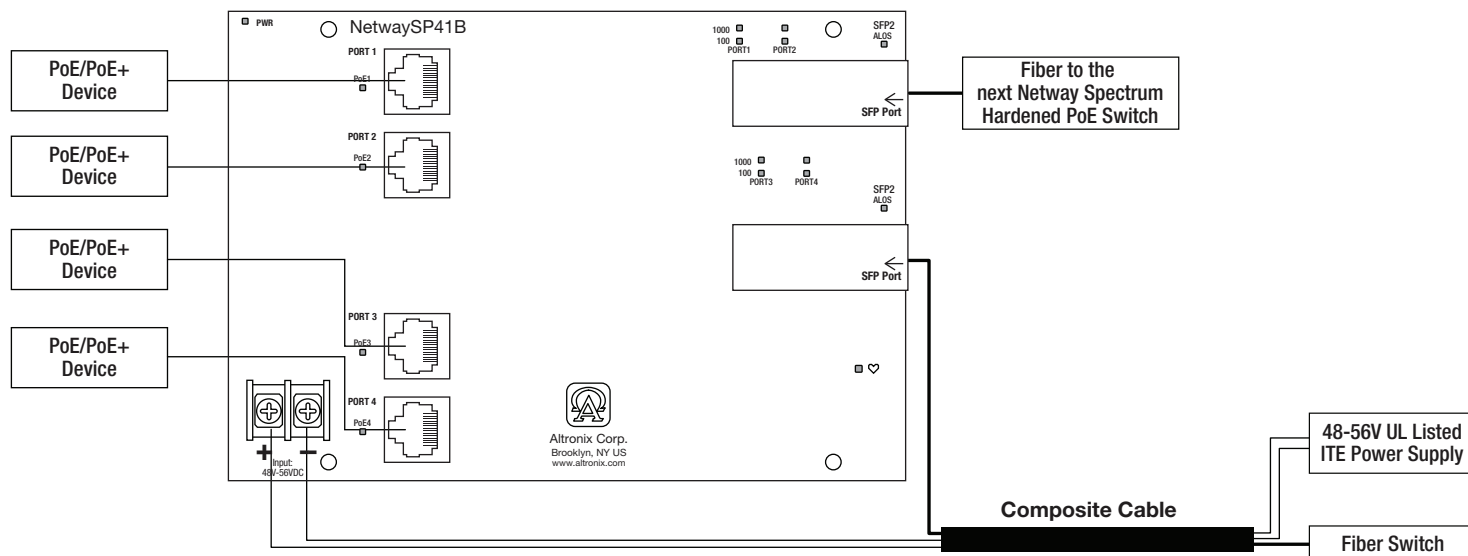
- Two (2) Gigabit SFP ports
- 120W total power:
  - Four (4) PoE/PoE+ (up to 30W) ports
- Four (4) 10/100/1000 Mbps ports
- IEEE 802.3at (30W), IEEE 802.3af (15W) compliant
- PoE activity LED indicators
- CE European Conformity
- Lifetime Warranty

### Similar products

<b>NetWaySP41WPX</b>	Outdoor 4-port PoE+ Hardened Switch in NEMA 4/4X, IP66-11 enclosure which accommodates stand-by batteries
<b>NetWaySP41WP</b>	Outdoor 4-port PoE+ Hardened Switch in NEMA 4/4X, IP66-11 enclosure
<b>NetWaySP41X</b>	Indoor 4-port PoE+ Hardened Switch in NEMA 1 Rated indoor enclosure
<b>NetWaySP41PL</b>	4-port PoE+ Hardened Switch with Integral Power on a Backplane
<b>NetWaySP41B</b>	4-port PoE+ Hardened Switch (board only)

### Lifetime Warranty

### Typical Composite (Fiber + Copper) Application



### Specifications

#### Input

Voltage 48-56V UL Listed ITE power supply (up to 120W)

#### Power Output

Maximum Power Four (4) PoE+ (30W) ports  
IEEE 802.3at (30W) and  
IEEE 802.3af (15W) compliant  
120W total power  
Integral surge protection

**Fiber Ports:** Two (2) Gigabit SFP ports

**Ethernet Ports:** Four (4) 10/100/1000 Mbps ports  
Connectivity: RJ45, auto-crossover  
Wire type: 4-pair CAT5 or  
better structured cable  
Distance: up to 100m.  
Speed: 10/100/1000 Mbps,  
half/full duplex, auto negotiation

#### Indicators (LED)

Individual PoE On LEDs for each port  
Individual IP Link status, 10/100Base-T/active LEDs for each port  
ALOS LED indicates fiber connection for SFP port  
Heartbeat LED indicates proper operation of the unit

#### Agency Listings

CE European Conformity

#### Physical and Environmental

##### Dimensions (H x W x D)

Enclosure: 13.31" x 11.31" x 5.59"  
(338.1mm x 287.3mm x 142mm)  
Shipping: 20.25" x 12.5" x 7.25"  
(514.4mm x 317.5mm x 184.2mm)

NEMA 4/4X, IP66-11 Rated enclosure for outdoor use

##### Weight (approx.)

Product: 9.5 lb. (4.3 kg)  
Shipping: 10.9 lb. (4.9 kg)

##### Temperature

Operating (120W): -40°C to 75°C (-40°F to 167°F)  
Storage: -40°C to 85°C (-40°F to 185°F)

Relative Humidity 85% +/- 5%

Operating Altitude: -304.8 to 2,000m

### Lifetime Warranty

Altronix Corporation | 140 58th St | Brooklyn, NY 11220 USA

phone: +1 718.567.8181 | fax: +1 718.567.9056 | email: info@altronix.com | www.altronix.com



## NetWaySP41WPN

4-port Outdoor Hardened PoE Switch



### Power Sourcing Equipment and Accessories (order separately)



4-port Ethernet over Fiber Media Converters for Applications Utilizing Composite or Conventional Cabling

**NetWaySP4** Unit passes a maximum power up to 120W per port (240W total power) from a Power Supply or Midspan Injector. Four (4) 1Gb SFP ports.

**NetWaySP4P** Unit provides a maximum power up to 120W per port (240W total power) from a built-in Power Supply/ Charger. Four (4) 1Gb SFP ports.

**NetWaySP4P2** Unit provides 56VDC power-limited 60W max. per port (240W total power) from a built-in Power Supply/Charger. Four (4) 1Gb SFP ports.



#### SFP Modules - Hot Pluggable Transceivers

**P1MM** Multi-Mode SFP Module for distances up to 550m

**P1SM10** Single-Mode SFP Module for distances up to 10km

**P1AB2K** Single Strand SFP Module for distances up to 2km

**P1GCE** Copper SFP Module for distances up to 100m



#### NetWaySP1A

Ethernet over Fiber Media Converter/Repeater for Applications Requiring an Additional SFP (Fiber) Port

NetWaySP1A PoE powered media converter/repeater converts 10/100/1000 Mbps to Fiber (1000Base-X/SX/LX).



#### PoE Power Supplies

**POE60 - 75W Power Supply/Lithium Iron Phosphate Charger**

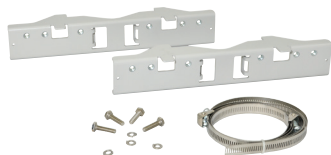
Provides 75W for NetWay Spectrum switches.

It also features a built-in charger for Lithium Iron Phosphate batteries.

**POE201 - 120W Power Supply/Charger**

Provides 120W for NetWay Spectrum switches.

It also features a built-in charger for sealed lead acid or gel type batteries.



#### PMK1 - Pole Mount Kit

PMK1 pole mount kit is designed to simplify installation of outdoor units.

It accommodates 2" - 8"(diameter) poles.

#### Lifetime Warranty

Altronix Corporation | 140 58th St | Brooklyn, NY 11220 USA

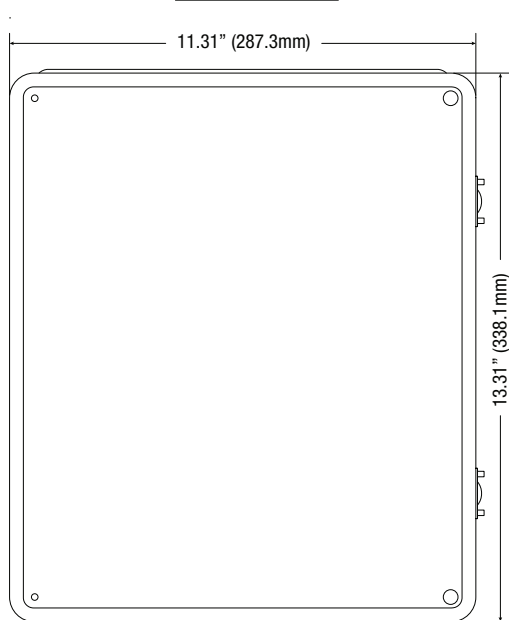
phone: +1 718.567.8181 | fax: +1 718.567.9056 | email: info@altronix.com | www.altronix.com

### Dimensions and Drawing

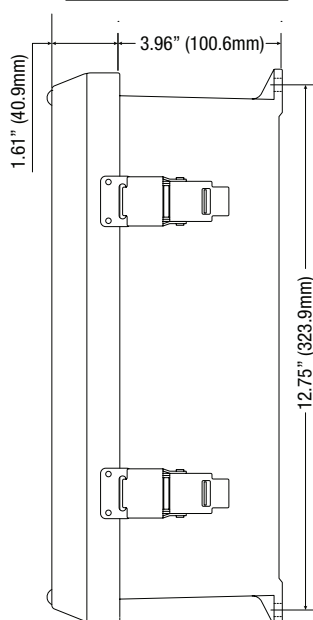
Dimensions (H x W x D approximate)

13.3" x 11.3" x 5.59" (338.1mm x 287.3mm x 142mm)

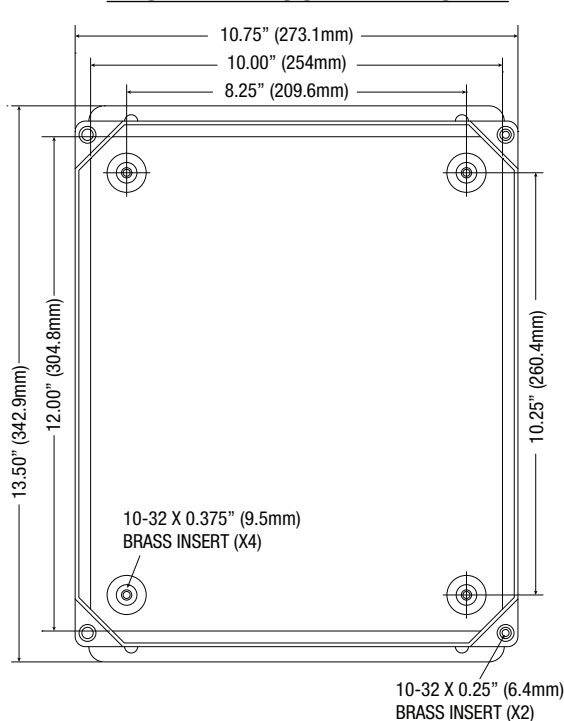
**FRONT VIEW**



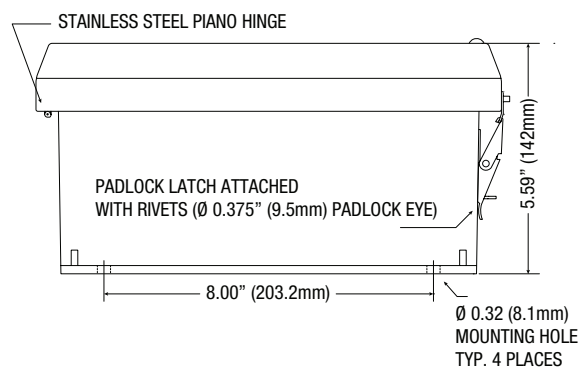
**RIGHT SIDE VIEW**



**FRONT VIEW COVER REMOVED**



**END VIEW**



### Lifetime Warranty

Altronix Corporation | 140 58th St | Brooklyn, NY 11220 USA

phone: +1 718.567.8181 | fax: +1 718.567.9056 | email: info@altronix.com | www.altronix.com