

NetWaySP41WPX

4-port Outdoor Hardened PoE Switch with Integral Power

Altronix NetWaySP41WPX Outdoor PoE+ Hardened Switch provides two (2) 1Gb SFP (Fiber) ports and four (4) PoE+ (30W) ports, passing data for PoE/PoE+ compliant devices. Cameras/edge devices may be located up to 100m from the unit.



NetWaySP41WPX

Key Features

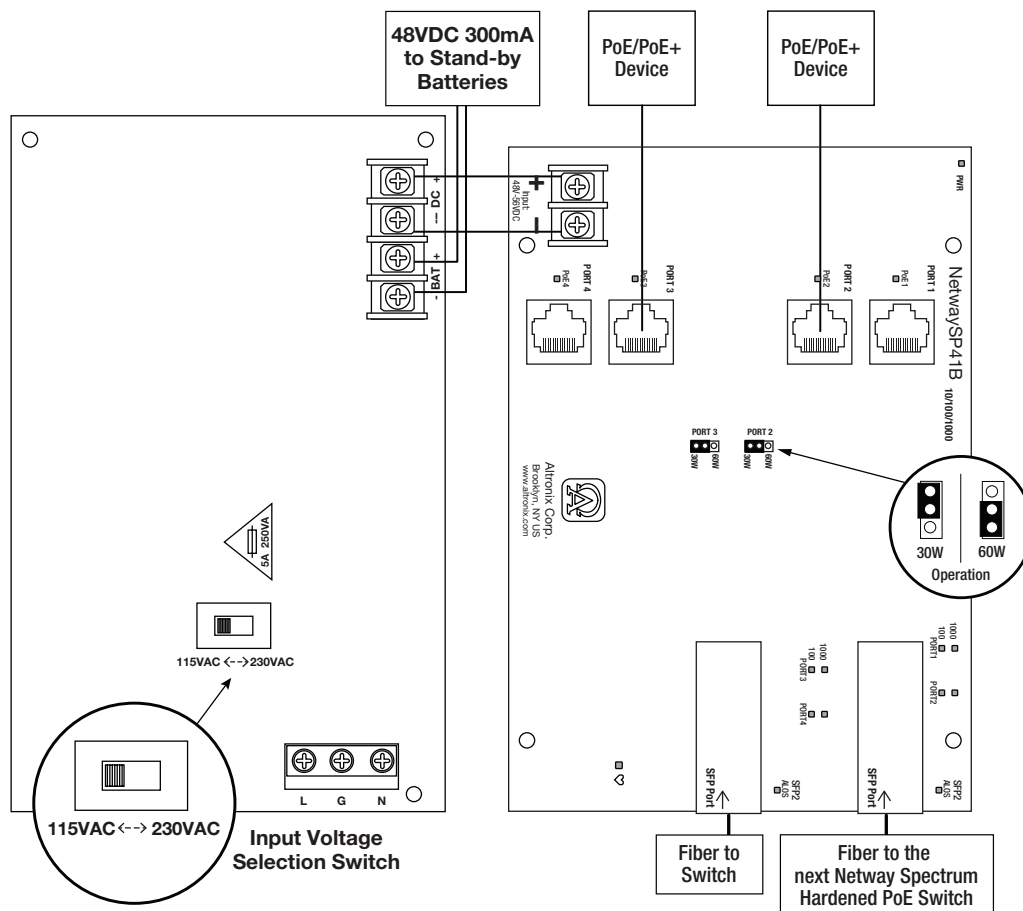
- Two (2) Gigabit SFP ports
- 120W total power:
 - Four (4) PoE/PoE+ (up to 30W) ports
- Four (4) 10/100/1000 Mbps ports
- IEEE 802.3at (30W), IEEE 802.3af (15W) compliant
- PoE activity LED indicators
- Automatic switch over to stand-by battery when AC fails
- CE European Conformity
- Lifetime Warranty

Similar products

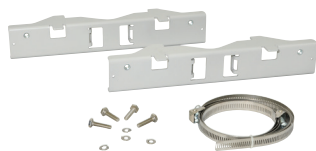
| | |
|----------------------|--|
| NetWaySP41WP | Outdoor 4-port PoE+ Hardened Switch in NEMA 4/4X, IP66-11 enclosure |
| NetWaySP41WPN | Outdoor 4-port PoE+ Hardened Switch only in NEMA 4/4X, IP66-11 enclosure |
| NetWaySP41X | Indoor 4-port PoE+ Hardened Switch in NEMA 1 Rated indoor enclosure |
| NetWaySP41PL | 4-port PoE+ Hardened Switch with Integral Power on a Backplane |
| NetWaySP41B | 4-port PoE+ Hardened Switch (board only) |

Lifetime Warranty

Typical Application



Accessories (order separately)



PMK2 - Pole Mount Kit

PMK2 pole mount kit is designed to simplify installation of outdoor units. It accommodates 2" - 8" (diameter) poles.



SFP Modules - Hot pluggable Transceivers

- P1MM** Multi-Mode SFP Module for distances up to 550m.
- P1SM10** Single-Mode SFP Module for distances up to 10km.
- P1AB2K** Single Strand SFP Module for distances up to 2km.
- P1GCE** Copper SFP Module for distances up to 100m.



NetWaySP1A - Ethernet over Fiber Media Converter/Repeater for Applications Requiring an Additional SFP (Fiber) Port

NetWaySP1A PoE powered media converter/repeater converts 10/100/1000 Mbps to Fiber (1000Base-X/SX/LX).

Lifetime Warranty



NetWaySP41WPX

4-port Outdoor Hardened PoE Switch with Integral Power



Specifications

Input

| | |
|---------|--|
| Voltage | 115VAC, 60Hz, 2.5A or 230VAC, 50/60Hz, 1.3A |
| Fusing | 5A/250V |

Power Output

| | |
|---------------|--|
| Maximum Power | Four (4) PoE+ (30W) ports IEEE 802.3at (30W) and IEEE 802.3af (15W) compliant 120W total power Integral surge protection |
|---------------|--|

Fiber Ports: Two (2) Gigabit SFP ports

Ethernet Ports: Four (4) 10/100/1000 Mbps ports
Connectivity: RJ45, auto-crossover
Wire type: 4-pair CAT5 or
better structured cable
Distance: up to 100m
Speed: 10/100/1000 Mbps,
half/full duplex, auto negotiation

Battery Charging

| | |
|-------------------------------|--------------------------------|
| Capacity | 12VDC/4AH (4 within enclosure) |
| Type | Sealed lead acid or gel type |
| Failover | Upon AC loss, instantaneous |
| Batteries are sold separately | |

Indicators (LED)

Individual PoE On LEDs for each port
Individual IP Link status, 10/100Base-T/active LEDs for
each port
ALOS LED indicates fiber connection for SFP port
Heartbeat LED indicates proper operation of the unit

Agency Listings

CE European Conformity

Physical and Environmental

Dimensions (H x W x D)

| | |
|------------|---|
| Enclosure: | 17.53" x 15.3" x 6.67" (445.3mm x 388.6mm x 169.4mm) |
| Shipping: | 21.375" x 14.5" x 9.5" (542.9mm x 374.7mm x 241.3mm) |

NEMA 4/4X, IP66-11 Rated enclosure for outdoor use
Accommodates four (4) 12VDC/4AH batteries (48V of backup)

Weight (approx.)

| | |
|-----------|-------------------|
| Product: | 15 lb. (6.8 kg) |
| Shipping: | 17.5 lb. (7.9 kg) |

Temperature

| | |
|------------|----------------------------------|
| Operating: | |
| 60W: | - 40°C to 75°C (- 40°F to 167°F) |
| 75W: | - 40°C to 70°C (- 40°F to 158°F) |
| 100W: | - 40°C to 55°C (- 40°F to 131°F) |
| 120W: | - 40°C to 45°C (- 40°F to 113°F) |
| Storage: | - 40°C to 85°C (- 40°F to 185°F) |

Relative Humidity 85% +/- 5%

BTU/Hr (approx.) 61 BTU/Hr.

Operating Altitude: - 304.8 to 2,000m

Lifetime Warranty

Altronix Corporation | 140 58th St | Brooklyn, NY 11220 USA

phone: +1 718.567.8181 | fax: +1 718.567.9056 | email: info@altronix.com | www.altronix.com



NetWaySP41WPX

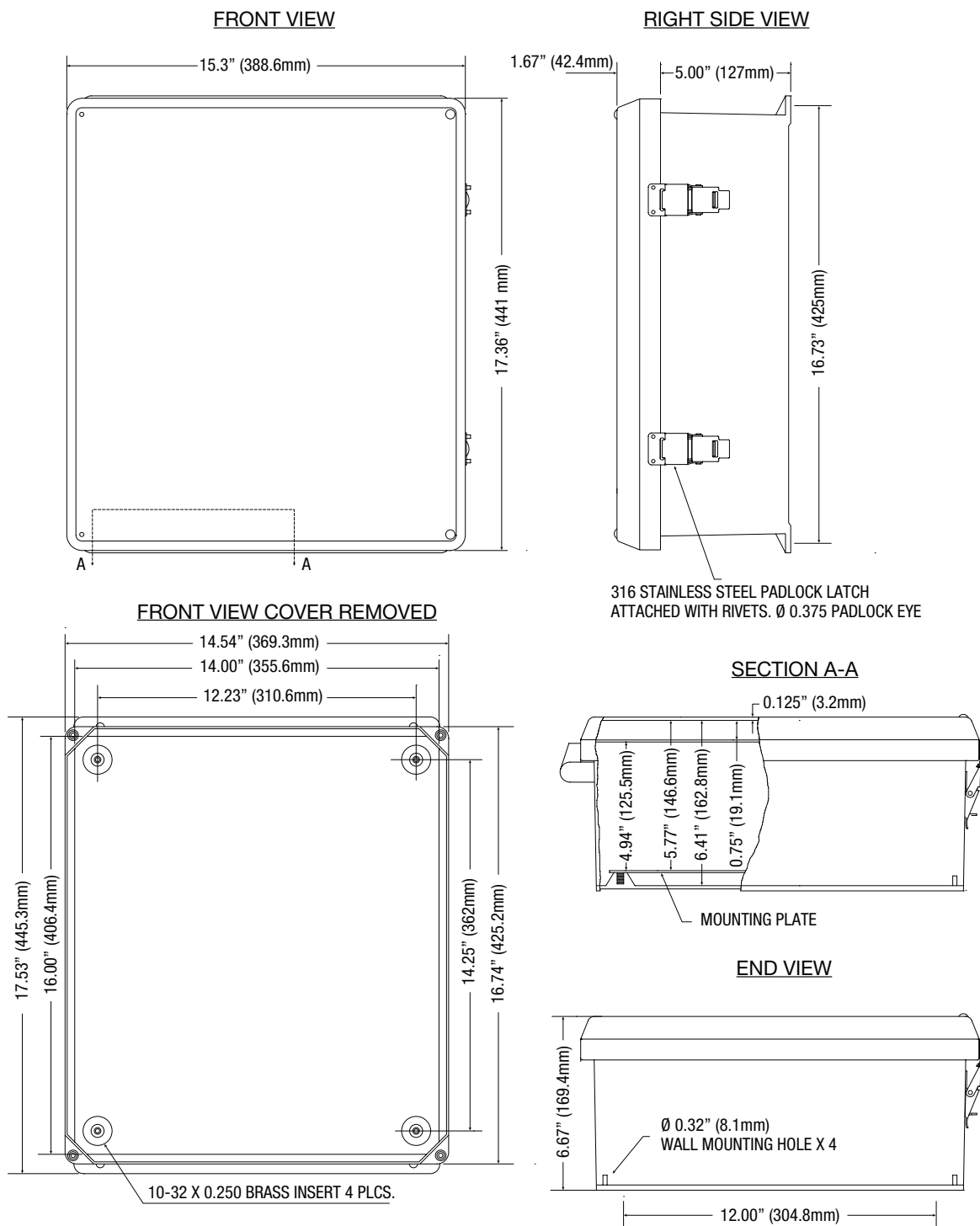
4-port Outdoor Hardened PoE Switch with Integral Power



Dimensions and Drawing

Dimensions (H x W x D approximate)

17.53" x 15.3" x 6.67" (445.3mm x 388.6mm x 169.4mm)



Lifetime Warranty

Altronix Corporation | 140 58th St | Brooklyn, NY 11220 USA

phone: +1 718.567.8181 | fax: +1 718.567.9056 | email: info@altronix.com | www.altronix.com