

## NetWaySP8WP3

### 8-port Hardened PoE+ Switch with Integral Power

Altronix NetWaySP8WP3 supports up to 60W per port (360W total power) for deploying the latest high-powered IP devices in remote locations. It is equipped with two (2) 1Gb SFP ports to transmit data at long distances and eight (8) PoE+ (30W) or two (2) Hi-PoE (60W) Ethernet ports. NetWaySP8WP3 accommodates single/multi-mode fiber or composite cable (fiber+copper) to simultaneously deliver power and data from NetWay Spectrum head-end media converters/injectors. Embedded LINQ Technology allows to monitor, control, and report power and diagnostics from anywhere.

For 277VAC input see model NetWaySP8WP37.



NetWaySP8WP3

#### Key Features

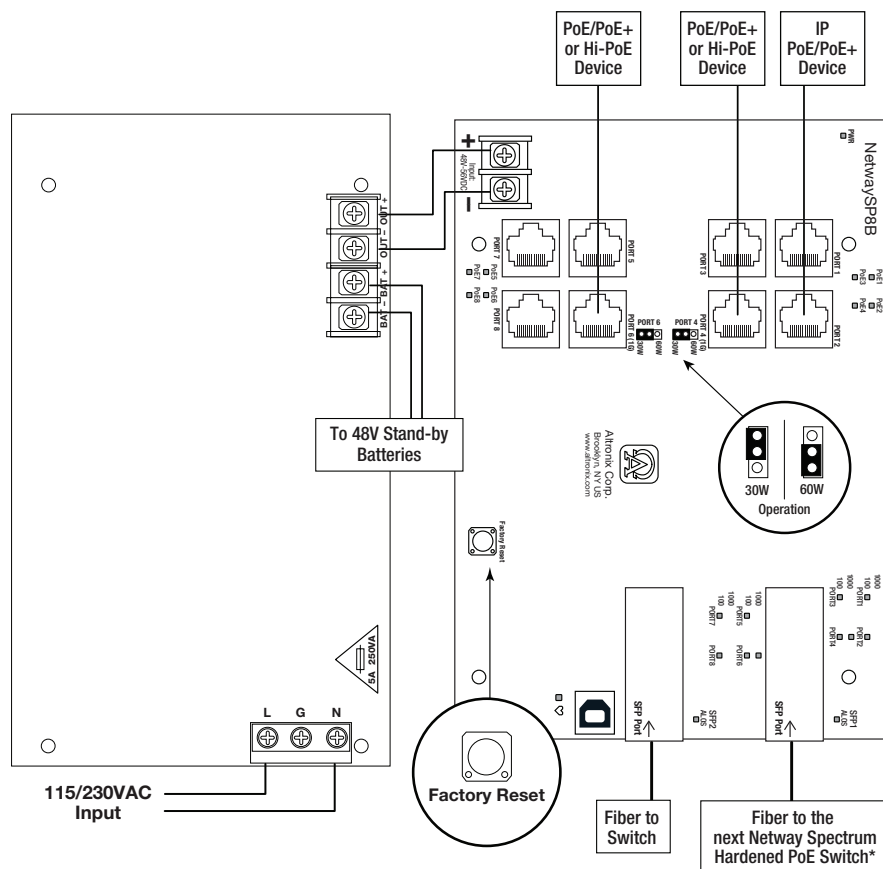
- Eight (8) PoE/PoE+ (up to 30W) ports or two (2) Hi-PoE (60W) ports (360W total power)
- IEEE 802.3af, 802.3at compliant or Hi-PoE (60W)
- Two (2) Gigabit SFP ports
- VLAN (Virtual Local Area Networks) subnetwork allows for the grouping together of devices for improved network traffic and higher security
- Built-in charger for sealed lead acid or gel type batteries
- CE European Conformity
- NEMA 4/4X, IP66-11 enclosure
- LINQ Technology:
  - Remote network management allows for camera/device reset and diagnostic monitoring
  - Provides local and/or remote access to critical information via LAN/WAN
  - Email and Windows Dashboard Alert notifications report real-time events
  - Event log tracks history

#### Similar products

<b>NetWaySP8WPX3</b>	Outdoor 8-port Hardened PoE+ Switch with Integral Power in NEMA 4/4X, IP66-11 enclosure which accommodates stand-by batteries
<b>NetWaySP8PL3</b>	8-port Hardened PoE+ Switch with Integral Power on a Backplane
<b>NetWaySP8X3</b>	8-port Hardened PoE+ Switch with Integral Power in NEMA 1 Rated indoor enclosure

#### Lifetime Warranty

### Typical Application



### Accessories (order separately)



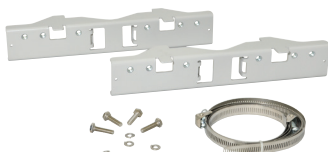
#### SFP Modules - Hot Pluggable Transceivers

- P1MM Multi-Mode SFP Module for distances up to 550m
- P1SM10 Single-Mode SFP Module for distances up to 10km
- P1AB2K Single Strand SFP Module for distances up to 2km
- P1GCE Copper SFP Module for distances up to 100m



#### NetWaySP1A

Ethernet over Fiber Media Converter/Repeater for Applications Requiring an Additional SFP (Fiber) Port  
NetWaySP1A PoE powered media converter/repeater converts 10/100/1000 Mbps to Fiber (1000Base-X/SX/LX).



#### PMK1 - Pole Mount Kit

PMK1 pole mount kit is designed to simplify installation of outdoor units. It accommodates 2" - 8" (diameter) poles.

#### Lifetime Warranty



## NetWaySP8WP3

8-port Hardened PoE+ Switch with Integral Power



### Specifications

#### Input

Voltage	115VAC, 60Hz, 3.5A or 230VAC, 50/60Hz, 2A
Input Fuse	5A/250V

#### Power Output

Maximum Power	Eight (8) PoE+ (30W) ports or two (2) Hi-PoE (60W) ports IEEE 802.3at (30W) and IEEE 802.3af (15W) compliant 360W total power. Integral surge protection
---------------	--

#### SFP Ports:

Two (2) Gigabit SFP ports

#### Ethernet Ports:

Six (6) 100 Mbps full duplex only  
(ports 1, 2, 3, 5, 7 and 8) and  
two (2) 10/100/1000 Mbps ports  
Connectivity: RJ45, auto-crossover  
Wire type: 4-pair CAT5e or higher  
structured cable  
Speed: 10/100/1000 Mbps  
half/full duplex, auto negotiation

#### Battery Charging

Type	48VDC charging circuit charges sealed lead acid or gel type batteries (require separate ventilated enclosure)
Failover	Upon AC loss, instantaneous
Batteries are sold separately. Separate ventilated enclosure is required	

#### Indicators (LED)

Individual PoE On LEDs for each port  
Individual IP Link status, 10/100/1000 Base-T/active LEDs for  
each port  
ALOS LED indicates fiber connection for SFP port  
Heartbeat LED indicates proper operation of the unit

#### VLAN:

Multiple management VLAN assignment  
802.1Q Tagged VLAN  
Up to 10 VLAN groups. ID Range 2-4095

#### LINQ Technology:

Remote network management allows for camera/device reset  
and diagnostic monitoring  
Provides local and/or remote access to critical information via  
LAN/WAN  
Email and Windows Dashboard Alert notifications report  
real-time events  
Event log tracks history

#### Agency Listings

CE	European Conformity
----	---------------------

#### Physical and Environmental

##### Dimensions (H x W x D)

Enclosure:	13.31" x 11.31" x 5.59" (338.1mm x 287.3mm x 142mm)
Shipping:	20.25" x 12.5" x 7.25" (514.4mm x 317.5mm x 184.2mm)

NEMA 4/4X, IP66-11 Rated enclosure for outdoor use

##### Weight (approx.)

Product:	10.5 lb. (4.76 kg)
Shipping:	11.9 lb. (5.4 kg)

##### Temperature

360W:	- 30°C to 70°C (- 22°F to 158°F)
240W:	- 30°C to 75°C (- 22°F to 167°F)
Storage	- 30°C to 85°C (- 22°F to 185°F)

Relative Humidity 85% +/- 5%

BTU/Hr. (approx.): 183 BTU/Hr.

Operating Altitude: - 304.8 to 2,000m

#### Lifetime Warranty

Altronix Corporation | 140 58th St | Brooklyn, NY 11220 USA

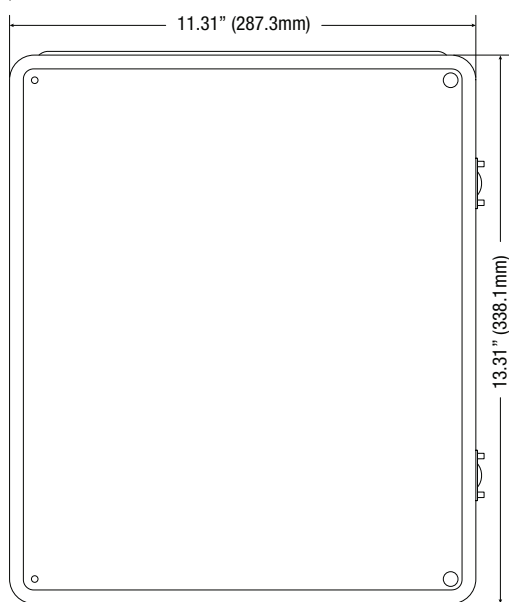
phone: +1 718.567.8181 | fax: +1 718.567.9056 | email: info@altronix.com | www.altronix.com

## Dimensions and Drawing

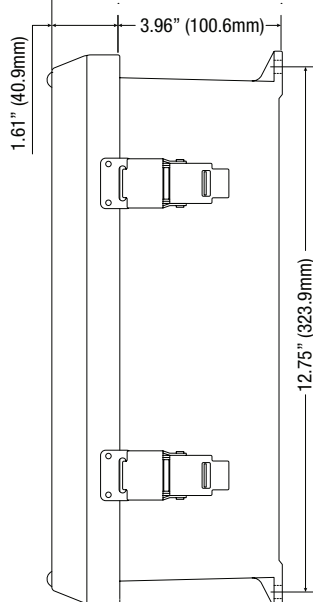
Dimensions (H x W x D approximate)

13.3" x 11.3" x 5.59" (338.1mm x 287.3mm x 142mm)

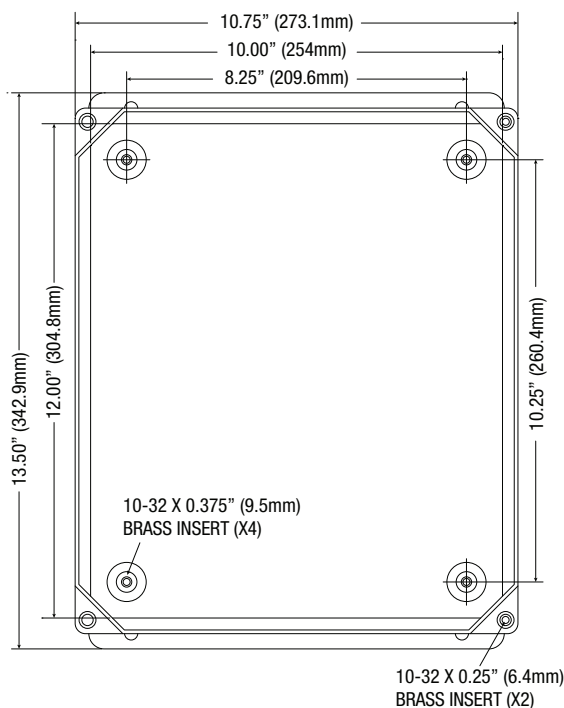
**FRONT VIEW**



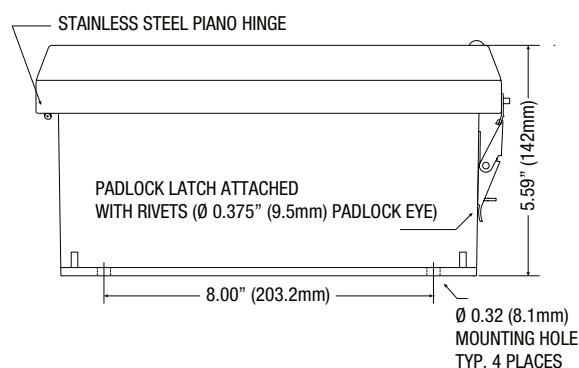
**RIGHT SIDE VIEW**



**FRONT VIEW COVER REMOVED**



**END VIEW**



## Lifetime Warranty

Altronix Corporation | 140 58th St | Brooklyn, NY 11220 USA

phone: +1 718.567.8181 | fax: +1 718.567.9056 | email: [info@altronix.com](mailto:info@altronix.com) | [www.altronix.com](http://www.altronix.com)