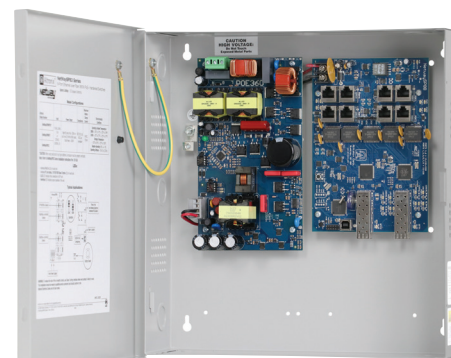


NetWaySP8X3

8-port Hardened Indoor PoE+ Switch with Integral Power

Altronix NetWaySP8X3 supports up to 60W per port (360W total power) for deploying the latest high-powered IP devices in remote locations. It is equipped with two (2) 1Gb SFP ports to transmit data at long distances and eight (8) PoE+ (30W) or two (2) Hi-PoE (60W) Ethernet ports. NetWaySP8X3 accommodates single/multi-mode fiber or composite cable (fiber+copper) to simultaneously deliver power and data from NetWay Spectrum head-end media converters/injectors. Embedded LINQ Technology allows to monitor, control, and report power and diagnostics from anywhere.



NetWaySP8X3

Key Features

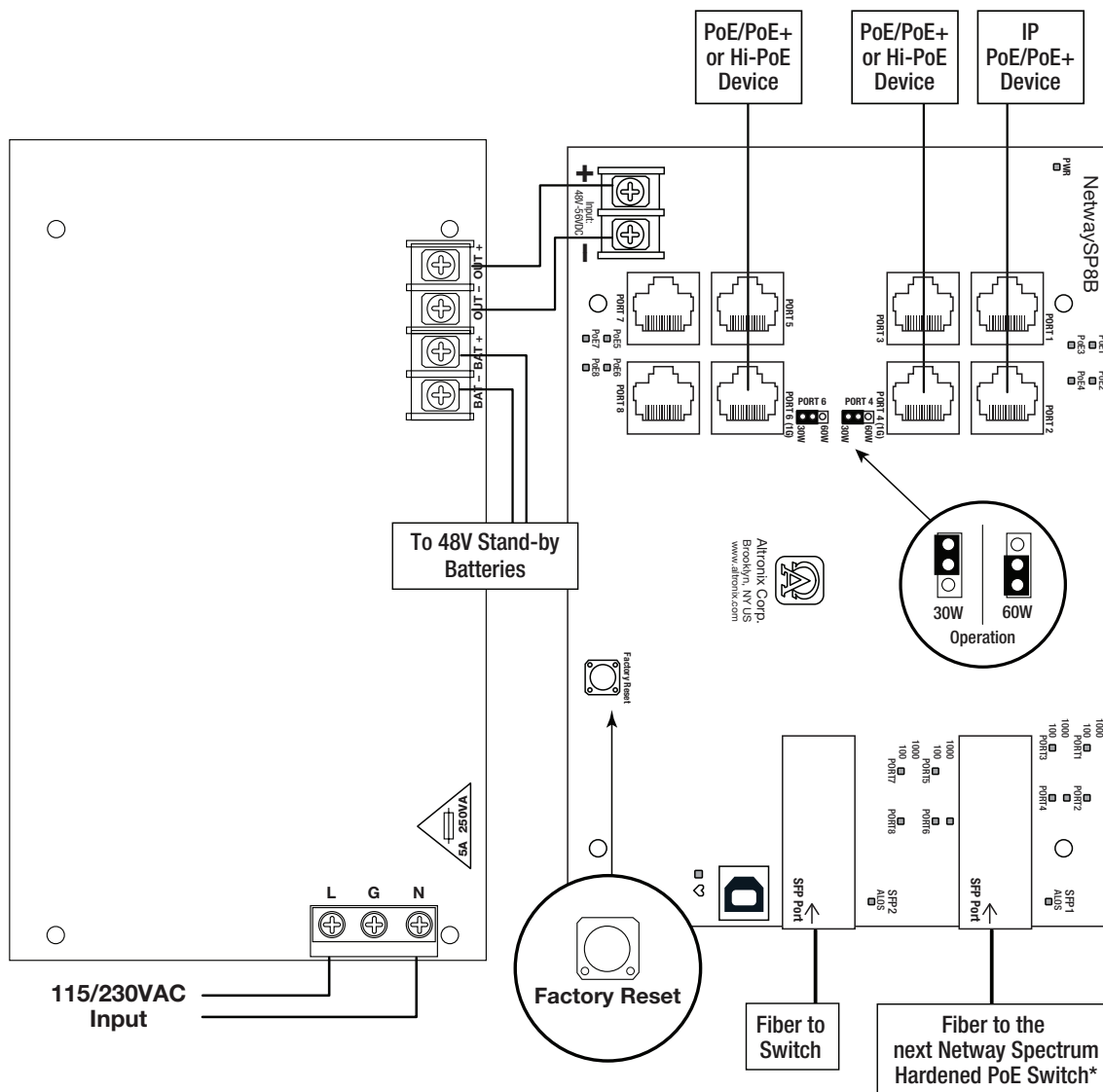
- Eight (8) PoE/PoE+ (up to 30W) ports or two (2) Hi-PoE (60W) ports (360W total power)
- IEEE 802.3af, 802.3at compliant or Hi-PoE (60W)
- Two (2) Gigabit SFP ports
- VLAN (Virtual Local Area Networks) subnetwork allows for the grouping together of devices for improved network traffic and higher security
- Built-in charger for sealed lead acid or gel type batteries
- CE European Conformity
- NEMA 1 Rated enclosure for indoor use
- LINQ Technology:
 - Remote network management allows for camera/device reset and diagnostic monitoring
 - Provides local and/or remote access to critical information via LAN/WAN
 - Email and Windows Dashboard Alert notifications report real-time events
 - Event log tracks history

Similar products

NetWaySP8WPX3	Outdoor 8-port Hardened PoE+ Switch with Integral Power in NEMA 4/4X, IP66-11 enclosure which accommodates stand-by batteries
NetWaySP8WP3	Outdoor 8-port Hardened PoE+ Switch with Integral Power in NEMA 4/4X, IP66-11 enclosure
NetWaySP8PL3	8-port Hardened PoE+ Switch with Integral Power on a Backplane

Lifetime Warranty

Typical Application



Accessories (order separately)



SFP Modules - Hot pluggable Transceivers

- P1MM** Multi-Mode SFP Module for distances up to 550m.
- P1SM10** Single-Mode SFP Module for distances up to 10km.
- P1AB2K** Single Strand SFP Module for distances up to 2km.
- P1GCE** Copper SFP Module for distances up to 100m.



NetWaySP1A -

Ethernet over Fiber Media Converter/Repeater for applications requiring an additional SFP (Fiber) Port

NetWaySP1A PoE powered media converter/repeater converts 10/100/1000 Mbps to Fiber (1000Base-X/SX/LX).

Lifetime Warranty



NetWaySP8X3

8-port Hardened Indoor PoE+ Switch with Integral Power



Specifications

Input

Voltage	115VAC, 60Hz, 3.5A or 230VAC, 50/60Hz, 2A
Input Fuse	5A/250V

Power Output

Maximum Power	Eight (8) PoE+ (30W) ports or two (2) Hi-PoE (60W) ports IEEE 802.3at (30W) and IEEE 802.3af (15W) compliant 360W total power Integral surge protection
---------------	--

Fiber Ports: Two (2) Gigabit SFP ports

Ethernet Ports: Six (6) 100 Mbps full duplex only
(ports 1, 2, 3, 5, 7 and 8) and
two (2) 10/100/1000 Mbps ports
Connectivity: RJ45, auto-crossover
Wire type: 4-pair CAT5e or higher
structured cable
Speed: 10/100/1000 Mbps
half/full duplex, auto negotiation

Battery Charging

Type	48VDC charging circuit charges sealed lead acid or gel type batteries (require separate ventilated enclosure)
Failover	Upon AC loss, instantaneous
Batteries are sold separately	

Indicators (LED)

Individual PoE On LEDs for each port
Individual IP Link status, 10/100Base-T/active LEDs for
each port
ALOS LED indicates fiber connection for SFP port
Heartbeat LED indicates proper operation of the unit

VLAN:

Multiple management VLAN assignment
802.1Q Tagged VLAN. Up to 10 VLAN groups
ID Range 2-4095

LINQ Technology:

Remote network management allows for camera/device
reset and monitoring
Provides local and/or remote access to critical information
via LAN/WAN
Email and Windows Dashboard Alert notifications report
real-time diagnostics
Event log tracks history

Agency Listings

CE European Conformity

Physical and Environmental

Dimensions (H x W x D)

Enclosure:	13.5" x 13" x 3.25" (342.9mm x 330.2mm x 82.6mm)
Shipping:	15" x 13.875" x 4.75" (381mm x 352.4mm x 120.6mm)

Weight (approx.)

Product:	6.85 lb. (3.11 kg)
Shipping:	7.75 lb. (3.51 kg)

Temperature

360W:	- 30°C to 70°C (- 22°F to 158°F)
240W:	- 30°C to 75°C (- 22°F to 167°F)
Storage	- 30°C to 85°C (- 22°F to 185°F)

Relative Humidity: 85% +/- 5%

BTU/Hr. (approx.): 183 BTU/Hr.

Operating Altitude: - 304.8 to 2,000m

Lifetime Warranty

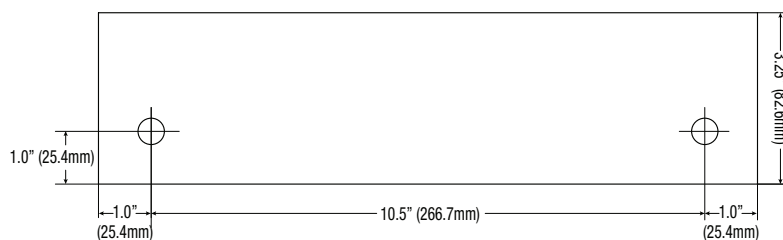
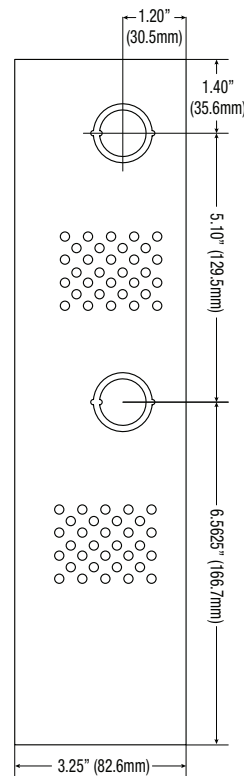
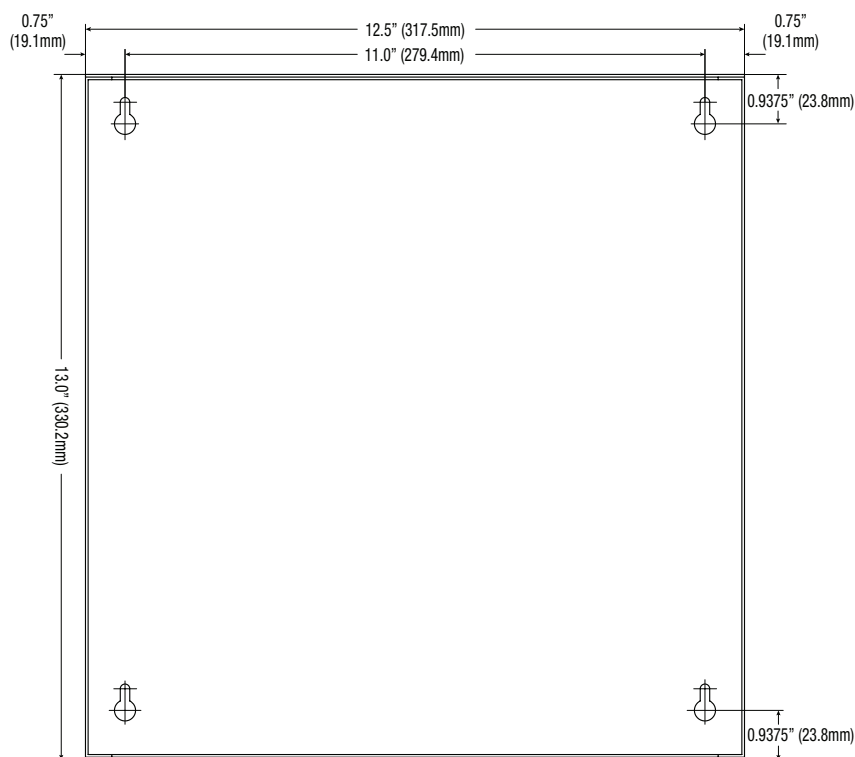
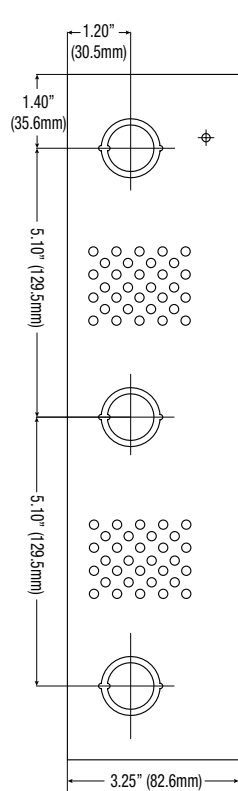
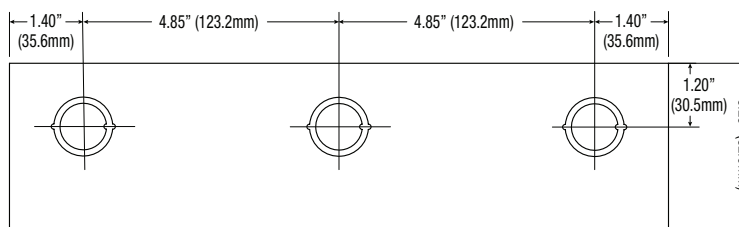
Altronix Corporation | 140 58th St | Brooklyn, NY 11220 USA

phone: +1 718.567.8181 | fax: +1 718.567.9056 | email: info@altronix.com | www.altronix.com

Dimensions and Drawing

Dimensions (H x W x D approximate)

13.5" x 13" x 3.25" (342.9mm x 330.2mm x 82.55mm)



Lifetime Warranty

Altronix Corporation | 140 58th St | Brooklyn, NY 11220 USA

phone: +1 718.567.8181 | fax: +1 718.567.9056 | email: info@altronix.com | www.altronix.com