

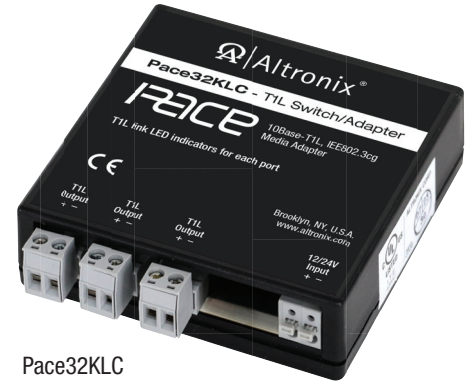
# Pace32KLC

Three Port Single Pair 10Base-T1L, IEE802.3cg Ethernet Media Adapter/Switch



Altronix Pace32KLC is a SPE (Single Pair Ethernet) 3-port T1L Media Adapter/Switch with Failsafe feature that enables connecting up to three (3) 10Base-T1L, IEE802.3cg compliant devices such as Security/Industrial/BMS/Elevators/HVAC Controllers and sensors, etc. to T1L Ethernet network. Long distance links can be achieved to over 1km (1,000m, 3,280 ft.). The Pace32KLC can be used in a typical star configuration or as a multi-point dropoff node configuration. T1L Outputs 2 & 3 are Fail-safe crossovers (see Application Diagram details).

In addition to new T1L (UTP) Ethernet network installations, upgrading of legacy networks, i.e. LONworks, RS485, 4-20mA Control Loops, etc. can be achieved by using the existing two wire cabling, thus saving rip-out & reinstallation costs.

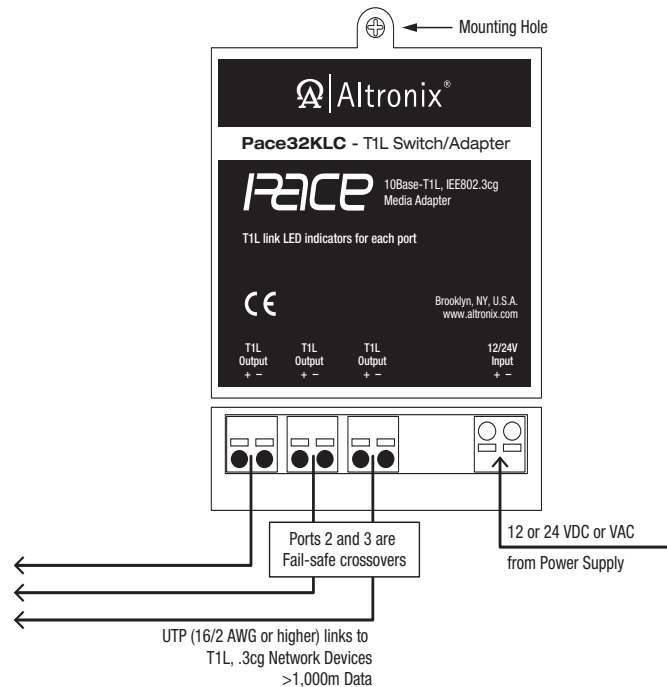


Pace32KLC

## Key Features

- Provides SPE (single pair Ethernet) over UTP (twisted pair) or 16/2 AWG or higher wire up to 1km (3,280 ft.)
- Utilize twisted pair for new installations or retrofit of IP devices over existing twisted pair cabling
- SPE Two Wire ports: 10Base-T1L, IEE802.3cg protocol 10Mbps
- Failsafe Feature: T1L Ports 2 and 3 are Fail-safe crossovers
- Allows for Star or Multi-Point Drop Off configuration
- Extends Network link distance in an industrial environment
- Building Automation, Surveillance & Security, BMS & HVAC, Elevators
- CE European Conformity
- Lifetime Warranty

## Typical Application Diagram



### Lifetime Warranty

## Pace32KLC

Three Port Single Pair 10Base-T1L, IEE802.3cg  
Ethernet Media Adapter/Switch



### Specifications

#### Input

Powered by 12/24VDC or VAC power supply  
(1.25W; 105mA @12V, 51mA @ 24V).

#### SPE (Single Pair Ethernet) over UTP or 16/2 AWG or Higher Link

Three (3) 10Base-T1L ports  
Wire type: Twisted pair (2-wire, UTP)  
Distance: 1km (1,000m, 3,280 ft.) @ 10Mbps

#### Failsafe Feature:

T1L Ports 2 and 3 are Fail-safe crossovers  
(see Typical Operation Diagram)

#### Indicators (LED)

T1L link LED indicators for each port

#### Agency Listings

CE European Conformity

#### Physical and Environmental

##### Dimensions (W x L x H)

Enclosure: 3.5" x 3.5" x 1" (88.9mm x 88.9mm x 25.4mm)  
Shipping: 8" x 6" x 5" (203.2mm x 152.4mm x 127mm)

##### Weight (approx.)

Product: 0.22 lb. (0.1 kg)  
Shipping: 0.4 lb. (0.18 kg)

##### Temperature

Operating: -40°C to 75°C (-40° to 167°F)  
Storage: -40°C to 75°C (-40° to 167°F)

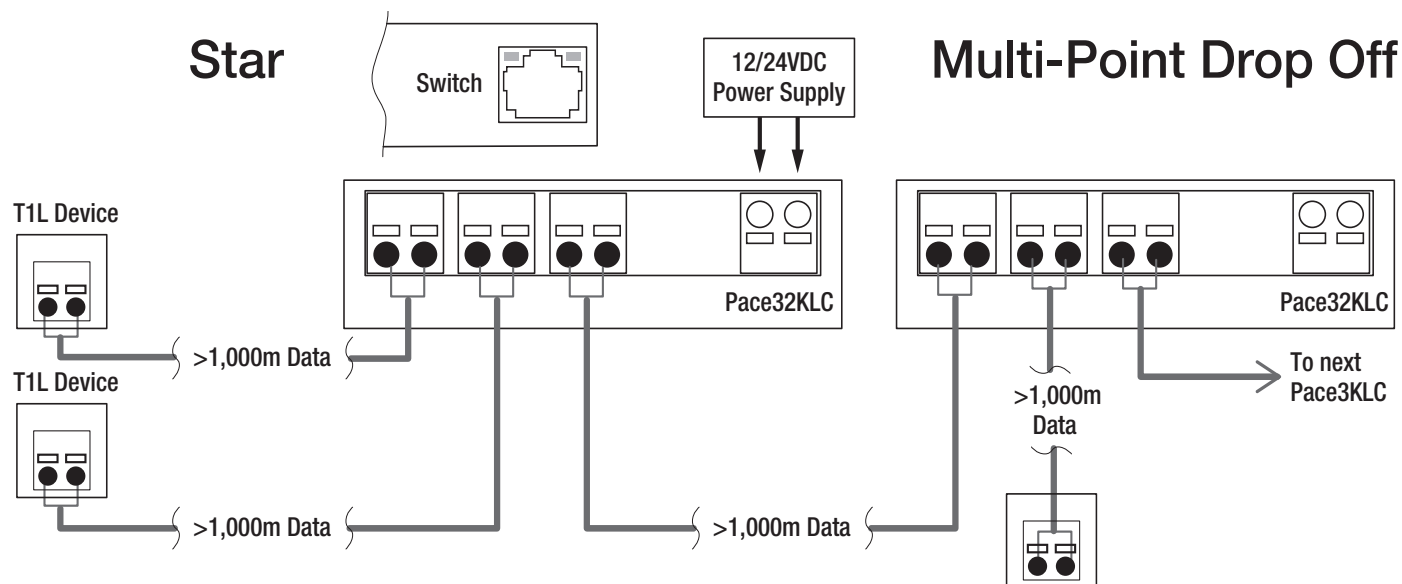
##### Relative Humidity

85% +/- 5%

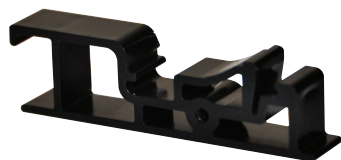
##### Operating Altitude

-304.8 to 2,000m

### Typical Operation Diagram



### Accessories



#### DCL2 - DIN Rail Mounting Clip

Allows for easy installation of Altronix adapters utilizing screw mounting holes to mount on a standard DIN rail (Altronix Din Rail models D10, D12, D19, or D24).

#### Lifetime Warranty