

SMP10C12X220 Series

Power Supply/Chargers

Altronix SMP10C12X220 series power supply/chargers convert a 220VAC (working range 198VAC - 256VAC), 50/60Hz input into a single, four (4), eight (8) or sixteen (16) fuse/PTC protected outputs. Outputs are 12VDC with a total of 10A max.



SMP10C12X220

Key Features

- Available with 1, 4, 8 or 16 outputs
- Fused or PTC protected outputs
- Supervision (where applicable, see Chart below):
 - AC Fail
 - Battery Fail and Low Battery
- Built-in charger for sealed lead acid or gel type batteries
- Instantaneous transfer to stand-by batteries
- Short circuit and overload protection
- AC input and DC output LEDs
- Power On/Off switch
- Lifetime Warranty

SMP10C12X220 Series Power Supply Configuration Reference Chart

Altronix Model Number	220VAC 50/60Hz Input Current (A)	12VDC Total Output Current (A)	Accessory Power Distribution Module(s)	Number of Outputs	Fused Outputs	PTC Outputs (auto-resettable)	Individual Output Rating (A)	Supervised	Accommodates Batteries
SMP10C12X220	0.8A	10A	-	1	-	-	10A	-	Two (2) 7AH
SMP10C12XX220					-	-			Two (2) 12AH
SMP10PMC12X220					-	-			Two (2) 7AH
SMP10PMC12XX220					-	-			Two (2) 12AH
SMP10PM12P4220			PD4	4	✓	-	3.5A	✓	Two (2) 7AH
SMP10PM12P4CB220			PD4CB		-	✓	2.5A		Two (2) 7AH
SMP10PM12P8220			PD8	8	✓	-	3.5A		Two (2) 7AH
SMP10PM12P8CB220			PD8CB		-	✓	2.5A		Two (2) 7AH
SMP10PM12P16220			PD16W	16	✓	-	3.5A		Two (2) 7AH
SMP10PM12P16CB220			PD16WCB		-	✓	2.5A		Two (2) 7AH

Lifetime Warranty



SMP10C12X220 Series

Power Supply/Chargers

Specifications

Input

Voltage 220VAC (working range 198VAC - 256VAC), 50/60Hz

Outputs

Voltage 12VDC
Current 10A @ 12VDC continuous max.
Protection Fused 3.5A / PTC 2.5A
Other Overvoltage protection
Filtered and regulated

Battery Charging

Capacity 7AH/12VDC (1 or 2 within enclosure)
12AH/12VDC (requires larger "X" enclosure)
40AH/65AH (requires separate enclosure)

Type Sealed lead acid or gel type
Failover Upon AC loss, instantaneous
Batteries are sold separately

Supervision *(where applicable)*

AC Failure Form "C" contacts
Low Battery Form "C" contacts

Indicators (LED)

Input 220VAC is present
DC Output Powered

Agency Listings

CE European Conformity

Physical and Environmental

Dimensions (H x W x D)

**SMP10C12X220, SMP10PMC12X220,
SMP10PM12P4(CB)220, SMP10PM12P8(CB)220,
SMP10PM12P16(CB)220:**

Enclosure: 13.5" x 13" x 3.25" (342.9mm x 330.2mm x 82.6mm)

Shipping: 15" x 13.875" x 4.75" (381mm x 352.4mm x 120.6mm)

SMP10C12XX220, SMP10PMC12XX220:

Enclosure: 15.5" x 12" x 4.5" (393.7mm x 304.8mm x 114.3mm)

Shipping: 16.5" x 13.5" x 6" (419.1mm x 342.9mm x 152.5mm)

Weight (approx.)

Model	Product Weight	Shipping Weight
SMP10(PM)C12X220	8.3 lb. (3.76 kg)	9.3 lb. (4.22 kg)
SMP10(PM)C12XX220	9.4 lb. (4.26 kg)	10.7 lb. (4.85 kg)
SMP10PM12P4(CB)220	8.5 lb. (3.85 kg)	9.5 lb. (4.31 kg)
SMP10PM12P8(CB)220	8.6 lb. (3.90 kg)	9.6 lb. (4.35 kg)
SMP10PM12P16(CB)220	8.8 lb. (3.99 kg)	9.8 lb. (4.44 kg)

Temperature

Operating: 0°C to 49°C (32°F to 120°F)
Storage: - 20°C to 70°C (- 4°F to 158°F)

Relative Humidity 85% +/- 5%

BTU/Hr. (approx.): 61 BTU/Hr.

Lifetime Warranty

SMP10C12X220 Series

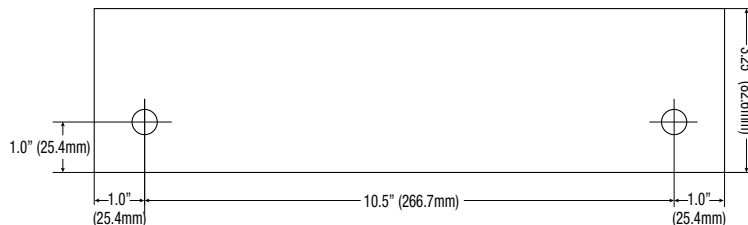
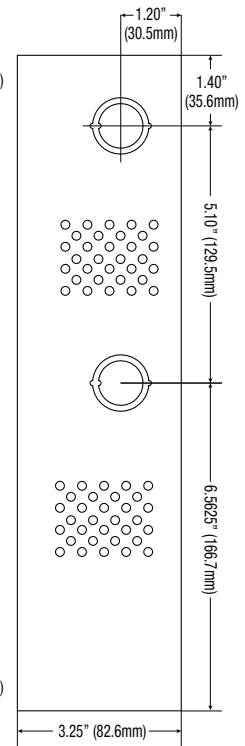
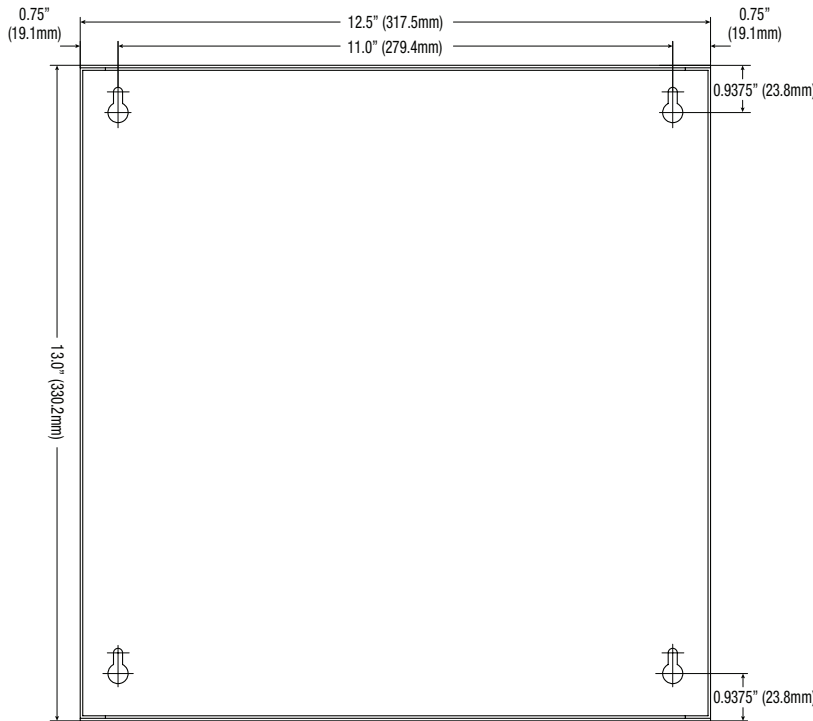
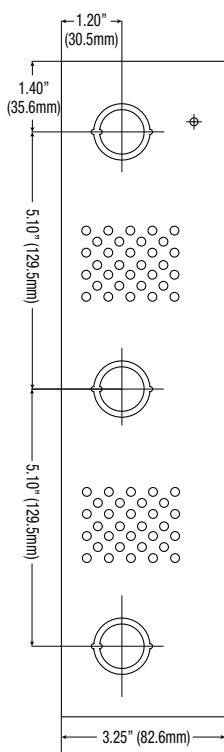
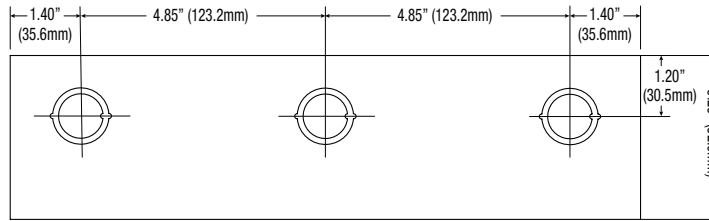
Power Supply/Chargers

Dimensions and Drawing

SMP10C12X220, SMP10PMC12X220, SMP10PM12P4(CB)220, SMP10PM12P8(CB)220,
SMP10PM12P16(CB)220

Dimensions (H x W x D approximate)

13.5" x 13" x 3.25" (342.9mm x 330.2mm x 82.55mm)



Lifetime Warranty

Altronix Corporation | 140 58th St | Brooklyn, NY 11220 USA

phone: +1 718.567.8181 | fax: +1 718.567.9056 | email: info@altronix.com | www.altronix.com

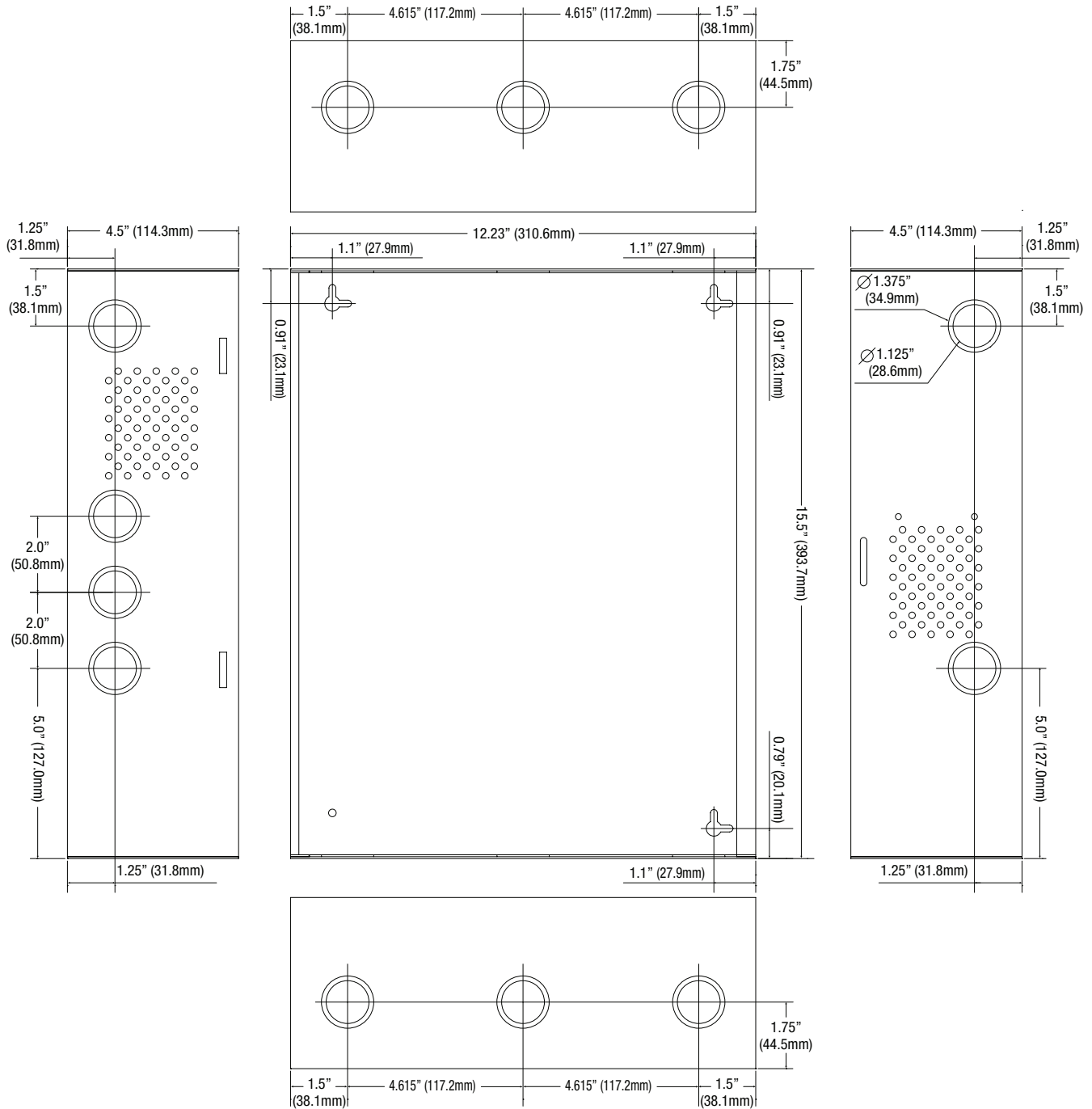
SMP10C12X220 Series

Power Supply/Chargers

Dimensions and Drawing

SMP10C12XX220, SMP10PMC12XX220 Dimensions (H x W x D approximate)

15.5" x 12" x 4.5" (393.7mm x 304.8mm x 114.3mm)



Lifetime Warranty

Altronix Corporation | 140 58th St | Brooklyn, NY 11220 USA

phone: +1 718.567.8181 | fax: +1 718.567.9056 | email: info@altronix.com | www.altronix.com