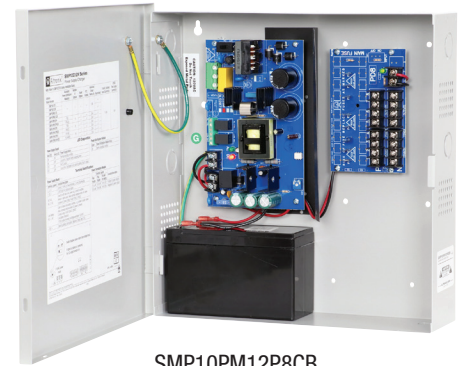


SMP10C12X Series

Power Supply/Chargers

Altronix SMP10C12X series power supply/chargers convert a 115VAC, 50/60Hz input into a single, four (4), eight (8) or sixteen (16) fuse/PTC protected outputs. Outputs are 12VDC with a total of 10A max.



SMP10PM12P8CB

Key Features

- Available with 1, 4, 8 or 16 outputs
- Fused or PTC protected outputs
- Supervision (where applicable, see Chart below):
 - AC Fail
 - Battery Fail and Low Battery
- Built-in charger for sealed lead acid or gel type batteries
- Instantaneous transfer to stand-by batteries
- Short circuit and overload protection
- AC input and DC output LEDs
- Power On/Off switch
- Lifetime Warranty

SMP10C12X Series Power Supply Configuration Reference Chart

Altronix Model Number	115VAC 50/60Hz Input Current (A)	12VDC Total Output Current (A)	Accessory Power Distribution Module(s)	Number of Outputs	Fused Outputs	PTC Outputs (auto-resettable)	Individual Output Rating (A)	Supervised	Accommodates Batteries
SMP10C12X	1.45A	10A	-	1	-	-	10A	-	Two (2) 7AH
SMP10C12XX					-	-			Two (2) 12AH
SMP10PMC12X					-	-			Two (2) 7AH
SMP10PMC12XX					-	-			Two (2) 12AH
SMP10PM12P4			PD4	4	✓	-	3.5A	✓	Two (2) 7AH
SMP10PM12P4CB			PD4CB		-	✓	2.5A		Two (2) 7AH
SMP10PM12P8			PD8	8	✓	-	3.5A		Two (2) 7AH
SMP10PM12P8CB			PD8CB		-	✓	2.5A		Two (2) 7AH
SMP10PM12P16			PD16W	16	✓	-	3.5A		Two (2) 7AH
SMP10PM12P16CB			PD16WCB		-	✓	2.5A		Two (2) 7AH

Lifetime Warranty



SMP10C12X Series

Power Supply/Chargers

Specifications

Input

Voltage 115VAC, 50/60Hz

Outputs

Voltage 12VDC
Current 10A @ 12VDC continuous max.
Protection Fused 3.5A / PTC 2.5A
Other Overvoltage protection
Filtered and regulated

Battery Charging

Capacity 7AH/12VDC (1 or 2 within enclosure)
12AH/12VDC (requires larger "X" enclosure)
40AH/65AH (requires separate enclosure)

Type Sealed lead acid or gel type
Failover Upon AC loss, instantaneous
Batteries are sold separately

Supervision *(where applicable)*

AC Failure Form "C" contacts
Low Battery Form "C" contacts

Indicators (LED)

Input 115VAC is present
DC Output Powered

Physical and Environmental

Dimensions (H x W x D)

**SMP10C12X, SMP10PMC12X, SMP10PM12P4(CB),
SMP10PM12P8(CB), SMP10PM12P16(CB):**

Enclosure: 13.5" x 13" x 3.25" (342.9mm x 330.2mm x 82.6mm)

Shipping: 15" x 13.875" x 4.75" (381mm x 352.4mm x 120.6mm)

SMP10C12XX, SMP10PMC12XX:

Enclosure: 15.5" x 12" x 4.5" (393.7mm x 304.8mm x 114.3mm)

Shipping: 16.5" x 13.5" x 6" (419.1mm x 342.9mm x 152.5mm)

Weight (approx.)

Model	Product Weight	Shipping Weight
SMP10(PM)C12X	8.3 lb. (3.76 kg)	9.3 lb. (4.22 kg)
SMP10(PM)C12XX	9.4 lb. (4.26 kg)	10.7 lb. (4.85 kg)
SMP10PM12P4(CB)	8.5 lb. (3.85 kg)	9.5 lb. (4.31 kg)
SMP10PM12P8(CB)	8.6 lb. (3.90 kg)	9.6 lb. (4.35 kg)
SMP10PM12P16(CB)	8.8 lb. (3.99 kg)	9.8 lb. (4.44 kg)

Temperature

Operating: 0°C to 49°C (32°F to 120°F)
Storage: - 20°C to 70°C (- 4°F to 158°F)

Relative Humidity 85% +/- 5%

BTU/Hr. (approx.): 61 BTU/Hr.

Lifetime Warranty

SMP10C12X Series

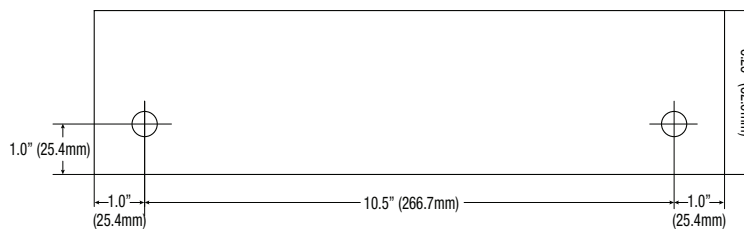
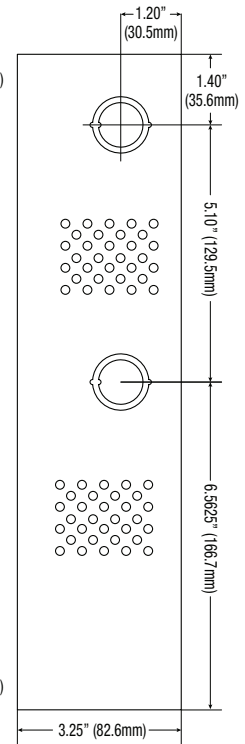
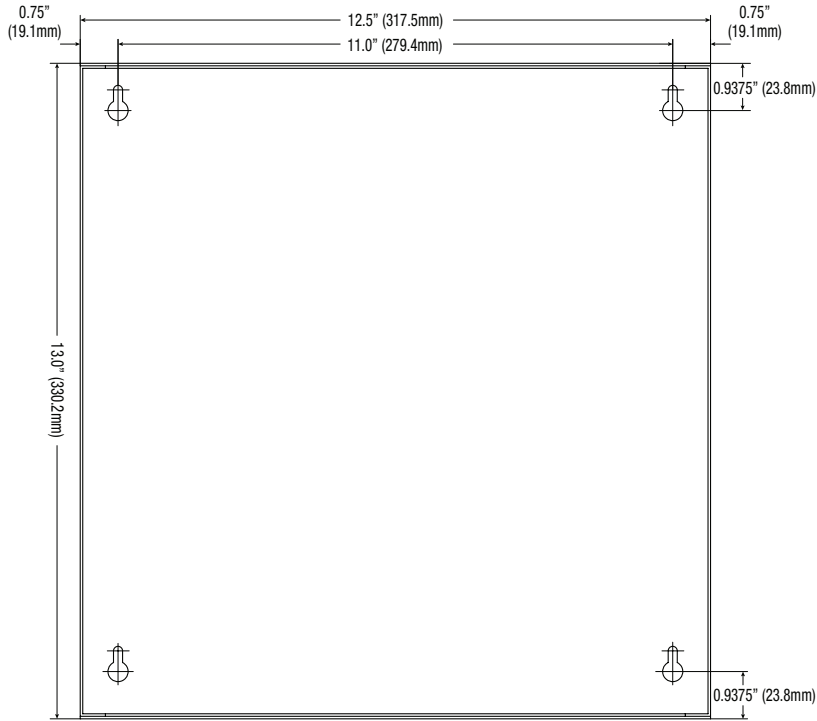
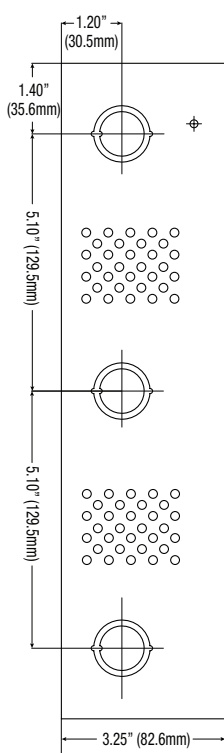
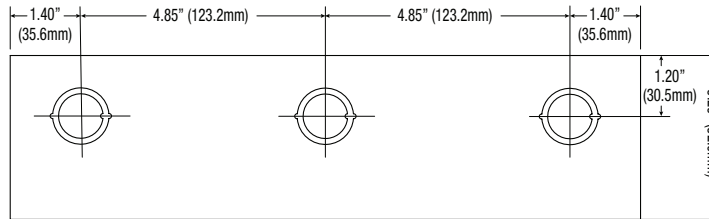
Power Supply/Chargers

Dimensions and Drawing

SMP10C12X, SMP10PMC12X, SMP10PM12P4(CB), SMP10PM12P8(CB), SMP10PM12P16(CB):

Dimensions (H x W x D approximate)

13.5" x 13" x 3.25" (342.9mm x 330.2mm x 82.55mm)



Lifetime Warranty

Altronix Corporation | 140 58th St | Brooklyn, NY 11220 USA

phone: +1 718.567.8181 | fax: +1 718.567.9056 | email: info@altronix.com | www.altronix.com

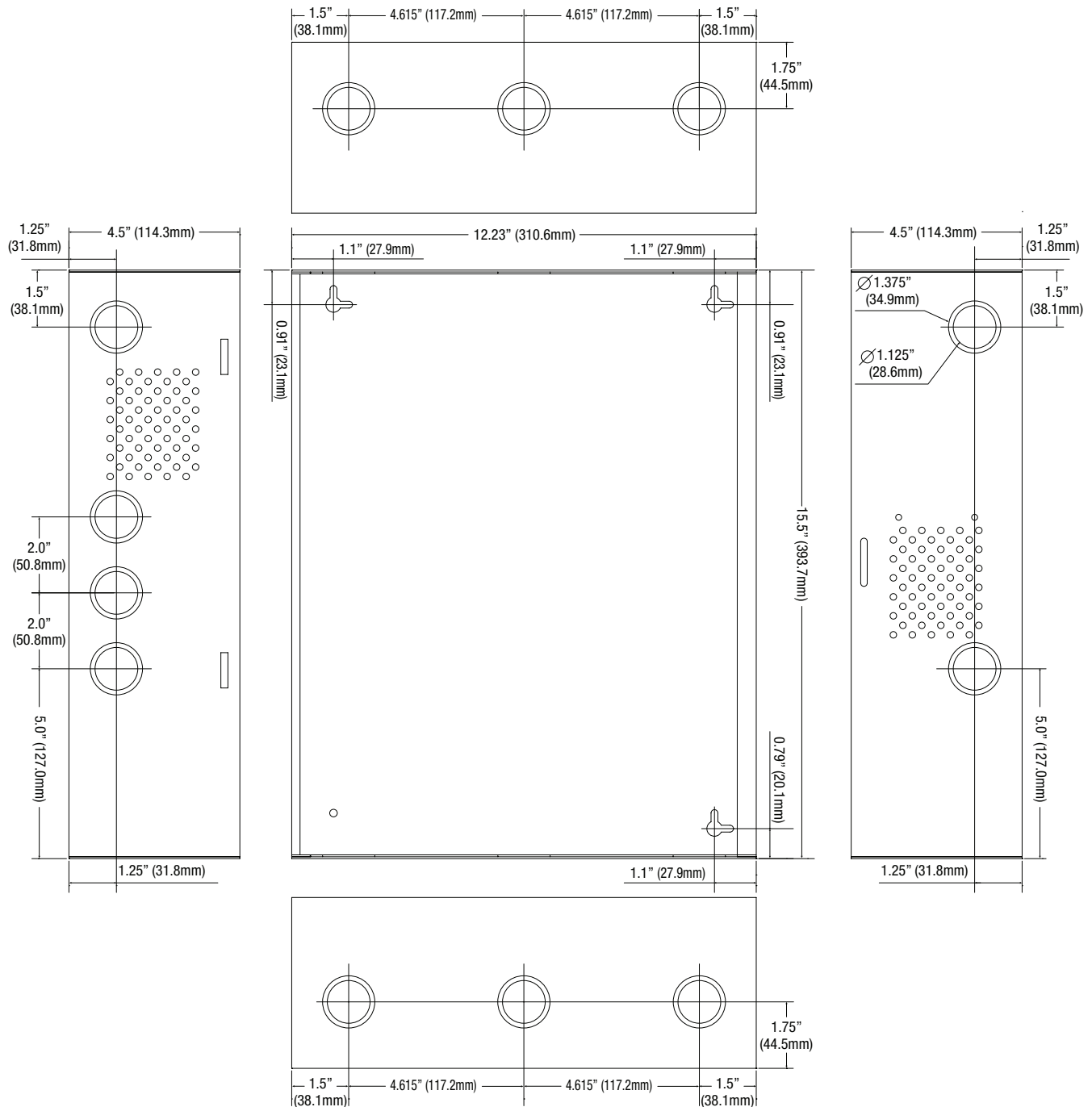
SMP10C12X Series

Power Supply/Chargers

Dimensions and Drawing

SMP10C12XX, SMP10PMC12XX Dimensions (H x W x D approximate)

15.5" x 12" x 4.5" (393.7mm x 304.8mm x 114.3mm)



Lifetime Warranty

Altronix Corporation | 140 58th St | Brooklyn, NY 11220 USA

phone: +1 718.567.8181 | fax: +1 718.567.9056 | email: info@altronix.com | www.altronix.com