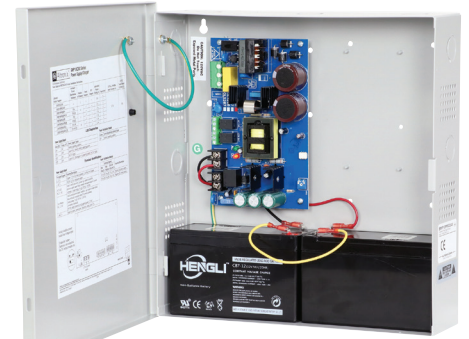


SMP10C24X Series

Power Supply/Chargers

Altronix SMP10C24X series power supply/chargers convert a 115VAC, 50/60Hz input into a single, four (4), eight (8) or sixteen (16) fuse/PTC protected outputs. Outputs are 24VDC with a total of 10A max.



SMP10PMC24X

Key Features

- Available with 1, 4, 8 or 16 outputs
- Fused or PTC protected outputs
- Supervision (where applicable, see Chart below):
 - AC Fail
 - Battery Fail and Low Battery
- Built-in charger for sealed lead acid or gel type batteries
- Instantaneous transfer to stand-by batteries
- Short circuit and overload protection
- AC input and DC output LEDs
- Power On/Off switch
- Lifetime Warranty

SMP10C24X Series Power Supply Configuration Reference Chart

Altronix Model Number	115VAC, 50/60Hz Input Current (A)	24VDC Total Output Current (A)	Accessory Power Distribution Module(s)	Number of Outputs	Fused Outputs	PTC Outputs (auto-resetable)	Individual Output Rating (A)	Supervised	Accommodates Batteries
SMP10C24X	2.7A	10A	-	1	-	-	10A	-	Two (2) 12VDC/7AH
SMP10PMC24X			-	1	-	-	10A	-	
SMP10PM24P4			PD4	4	✓	-	3.5A	✓	
SMP10PM24P4CB			PD4CB	4	-	✓	2.5A		
SMP10PM24P8			PD8	8	✓	-	3.5A		
SMP10PM24P8CB			PD8CB	8	-	✓	2.5A		
SMP10PM24P16			PD16W	16	✓	-	3.5A		
SMP10PM24P16CB			PD16WCB	16	-	✓	2.5A		

Lifetime Warranty



SMP10C24X Series

Power Supply/Chargers

Specifications

Input

Voltage 115VAC, 50/60Hz

Outputs

Voltage 24VDC
Current 10A @ 24VDC continuous max.
Protection Fused 3.5A / PTC 2.5A
Other Overvoltage protection
Filtered and regulated

Battery Charging

Capacity 7AH/12VDC (1 or 2 within enclosure)
12AH/12VDC (requires larger "X" enclosure)
40AH/65AH (requires separate enclosure)
Type Sealed lead acid or gel type
Failover Upon AC loss, instantaneous
Batteries are sold separately

Supervision *(where applicable)*

AC Failure Form "C" contacts
Low Battery Form "C" contacts

Indicators (LED)

Input 115VAC is present
DC Output Powered

Agency Listings

CE European Conformity

Physical and Environmental

Dimensions (H x W x D)

Enclosure:
13.5" x 13" x 3.25" (342.9mm x 330.2mm x 82.6mm)
Shipping:
15" x 13.875" x 4.75" (381mm x 352.4mm x 120.6mm)

Weight (approx.)

Model	Product Weight	Shipping Weight
SMP10(PM)C24X	8.3 lb. (3.76 kg)	9.3 lb. (4.22 kg)
SMP10PM24P4(CB)	8.5 lb. (3.85 kg)	9.5 lb. (4.31 kg)
SMP10PM24P8(CB)	8.6 lb. (3.90 kg)	9.6 lb. (4.35 kg)
SMP10PM24P16(CB)	8.8 lb. (3.99 kg)	9.8 lb. (4.44 kg)

Temperature

Operating: 0°C to 49°C (32°F to 120°F)
Storage: - 20°C to 70°C (- 4°F to 158°F)

Relative Humidity 85% +/- 5%
BTU/Hr. (approx.): 122 BTU/Hr.

Lifetime Warranty

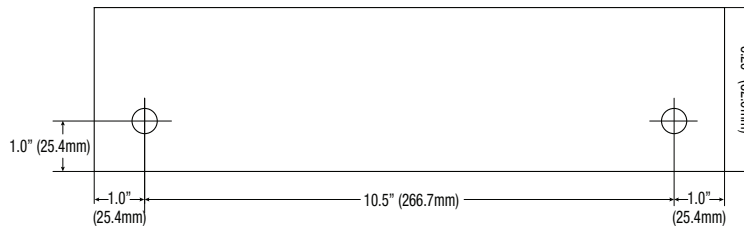
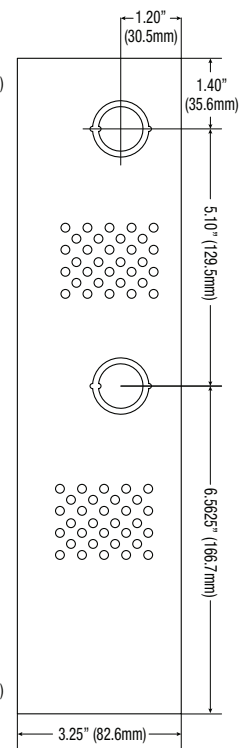
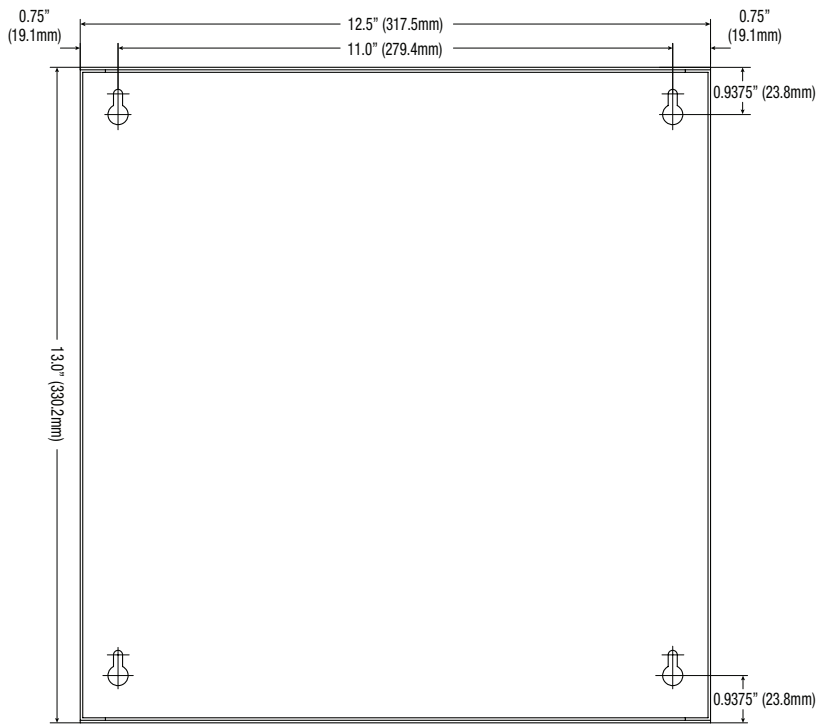
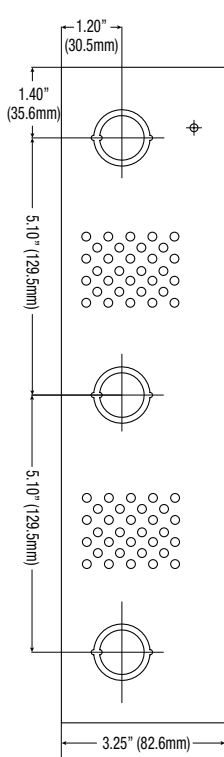
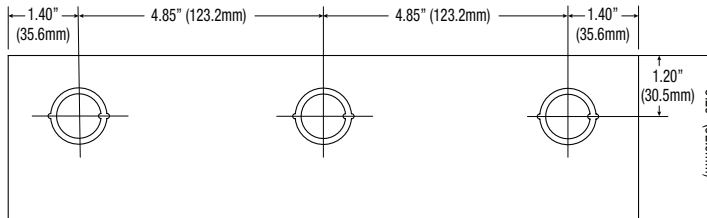
SMP10C24X Series

Power Supply/Chargers

Dimensions and Drawing

Dimensions (H x W x D approximate)

13.5" x 13" x 3.25" (342.9mm x 330.2mm x 82.55mm)



Lifetime Warranty

Altronix Corporation | 140 58th St | Brooklyn, NY 11220 USA

phone: +1 718.567.8181 | fax: +1 718.567.9056 | email: info@altronix.com | www.altronix.com