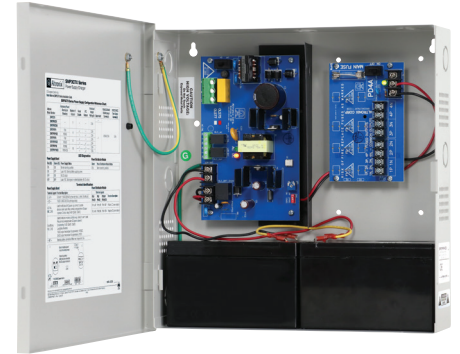


# SMP3CTX Series

## Power Supply/Chargers

Altronix SMP3CTX series power supply/chargers convert a 115VAC/230VAC, 50/60Hz input into a single, four (4), eight (8) or sixteen (16) fuse/PTC protected outputs. Outputs are selectable for 12VDC or 24VDC with a total of 2.5A max.



SMP3PMP4CB

### Key Features

- Available with 1, 4, 8 or 16 outputs
- Fused or PTC protected outputs
- Supervision (where applicable, see Chart below):
  - AC Fail
  - Low Battery
- Built-in charger for sealed lead acid or gel type batteries
- Instantaneous transfer to stand-by batteries
- Short circuit and overload protection
- AC input and DC output LEDs
- CE European Conformity
- Lifetime Warranty

### SMP3CTX series Power Supply Configuration Reference Chart

Altronix Model Number	115VAC/ 230VAC Input Current (A)	12VDC/ 24VDC Total Output Current (A)	Accessory Power Distribution Module(s)	Number of Outputs	Fused Outputs	PTC Outputs (auto-resettable)	Individual Output Rating (A)	Supervised	Accommodates Batteries	
SMP3CTX	0.65A/0.35A	2.5A	-	1	-	-	2.5A	-	Two (2) 7AH	
SMP3PMCTX			-	1	-	-	2.5A	-	Two (2) 7AH	
SMP3PMCTXX			-	1	-	-	-	2.5A	-	Two (2) 12AH
SMP3PMP4			PD4	4	✓	-	2.5A	✓	Two (2) 7AH	
SMP3PMP4CB			PD4CB	4	-	✓	2.0A		Two (2) 7AH	
SMP3PMP8			PD8	8	✓	-	2.5A		Two (2) 7AH	
SMP3PMP8CB			PD8CB	8	-	✓	2.0A		Two (2) 7AH	
SMP3PMP16			PD16W	16	✓	-	2.5A		Two (2) 7AH	
SMP3PMP16CB			PD16WCB	16	-	✓	2.0A		Two (2) 7AH	

#### Lifetime Warranty



# SMP3CTX Series

Power Supply/Chargers

## Specifications

### Input

Voltage 115VAC/230VAC, 50/60Hz

### Outputs

Voltage 12VDC or 24VDC selectable  
Current 2.5A @ 12VDC or 24VDC continuous max.  
Protection Fused 3.5A / PTC 2.5A  
Other Overvoltage protection  
Filtered and regulated

### Battery Charging

Capacity 7AH/12VDC (1 or 2 within enclosure)  
12AH/12VDC (requires larger "X" enclosure)  
40AH/65AH (requires separate enclosure)

Type Sealed lead acid or gel type  
Failover Upon AC loss, instantaneous

Batteries are sold separately

### Supervision *(where applicable)*

AC Failure Form "C" contacts  
Low Battery Form "C" contacts

### Indicators (LED)

Input 115VAC/230VAC is present  
DC Output Powered

### Agency Listings

CE European Conformity

## Physical and Environmental

### Dimensions (H x W x D)

**SMP3CTX, SMP3PMCTX, SMP3PMP4(CB),  
SMP3PMP8(CB), SMP3PMP16(CB):**

Enclosure: 13.5" x 13" x 3.25" (342.9mm x 330.2mm x 82.6mm)

Shipping: 15" x 13.875" x 4.75" (381mm x 352.4mm x 120.6mm)

**SMP3PMCTXX:**

Enclosure: 15.5" x 12" x 4.5" (393.7mm x 304.8mm x 114.3mm)

Shipping: 16.5" x 13.5" x 6" (419.1mm x 342.9mm x 152.5mm)

### Weight (approx.)

Model	Product Weight	Shipping Weight
SMP3(PM)CTX	6.9 lb. (3.72 kg)	7.9 lb. (4.18 kg)
SMP3PMCTXX	9.3 lb. (4.22 kg)	10.6 lb. (4.81 kg)
SMP3PMP4(CB)	8.4 lb. (3.81 kg)	9.4 lb. (4.26 kg)
SMP3PMP8(CB)	8.5 lb. (3.86 kg)	9.5 lb. (4.31 kg)
SMP3PMP16(CB)	8.7 lb. (3.95 kg)	9.7 lb. (4.40 kg)

### Temperature

Operating: 0°C to 49°C (32°F to 120°F)  
Storage: - 20°C to 70°C (- 4°F to 158°F)

Relative Humidity 85% +/- 5%

### BTU/Hr. (approx.):

12VDC: 15 BTU/Hr.  
24VDC: 31 BTU/Hr.

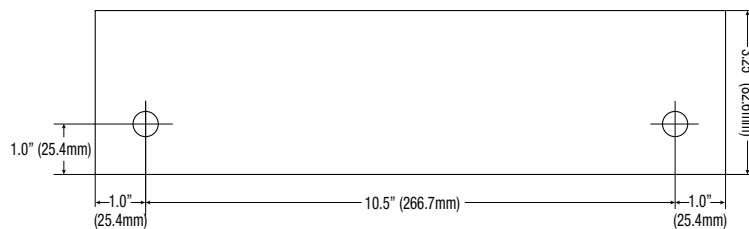
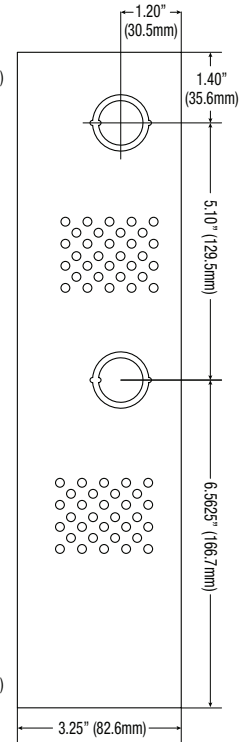
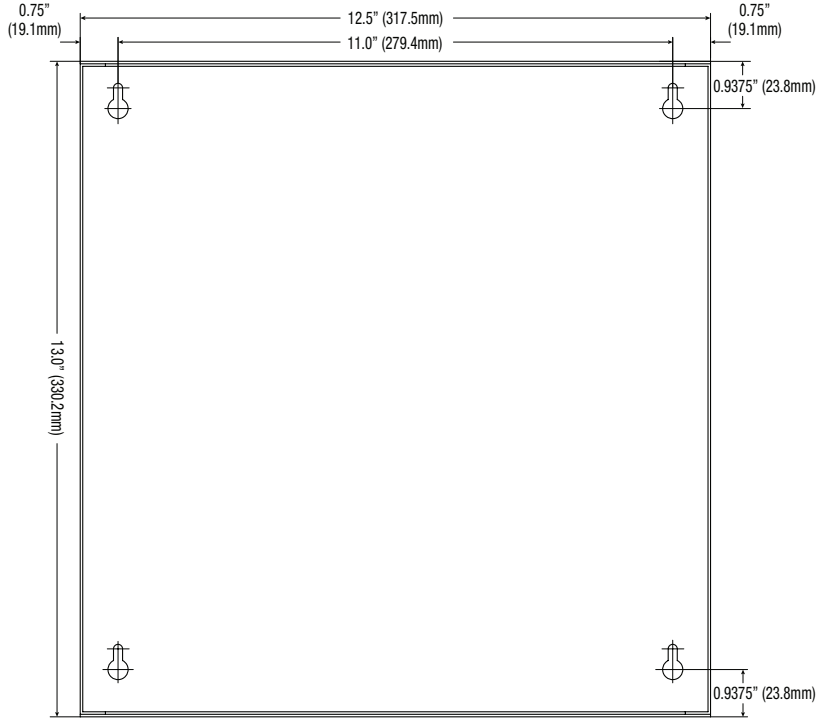
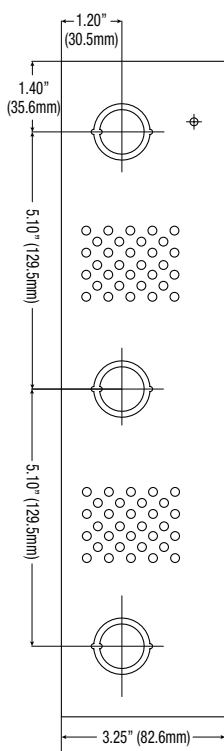
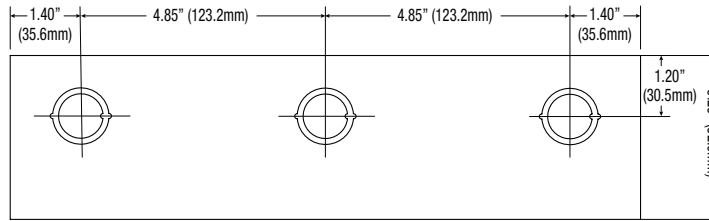
## Lifetime Warranty

## Dimensions and Drawing

SMP3CTX, SMP3PMCTX, SMP3PMP4(CB), SMP3PMP8(CB), SMP3PMP16(CB)

Dimensions (H x W x D approximate)

13.5" x 13" x 3.25" (342.9mm x 330.2mm x 82.55mm)



### Lifetime Warranty

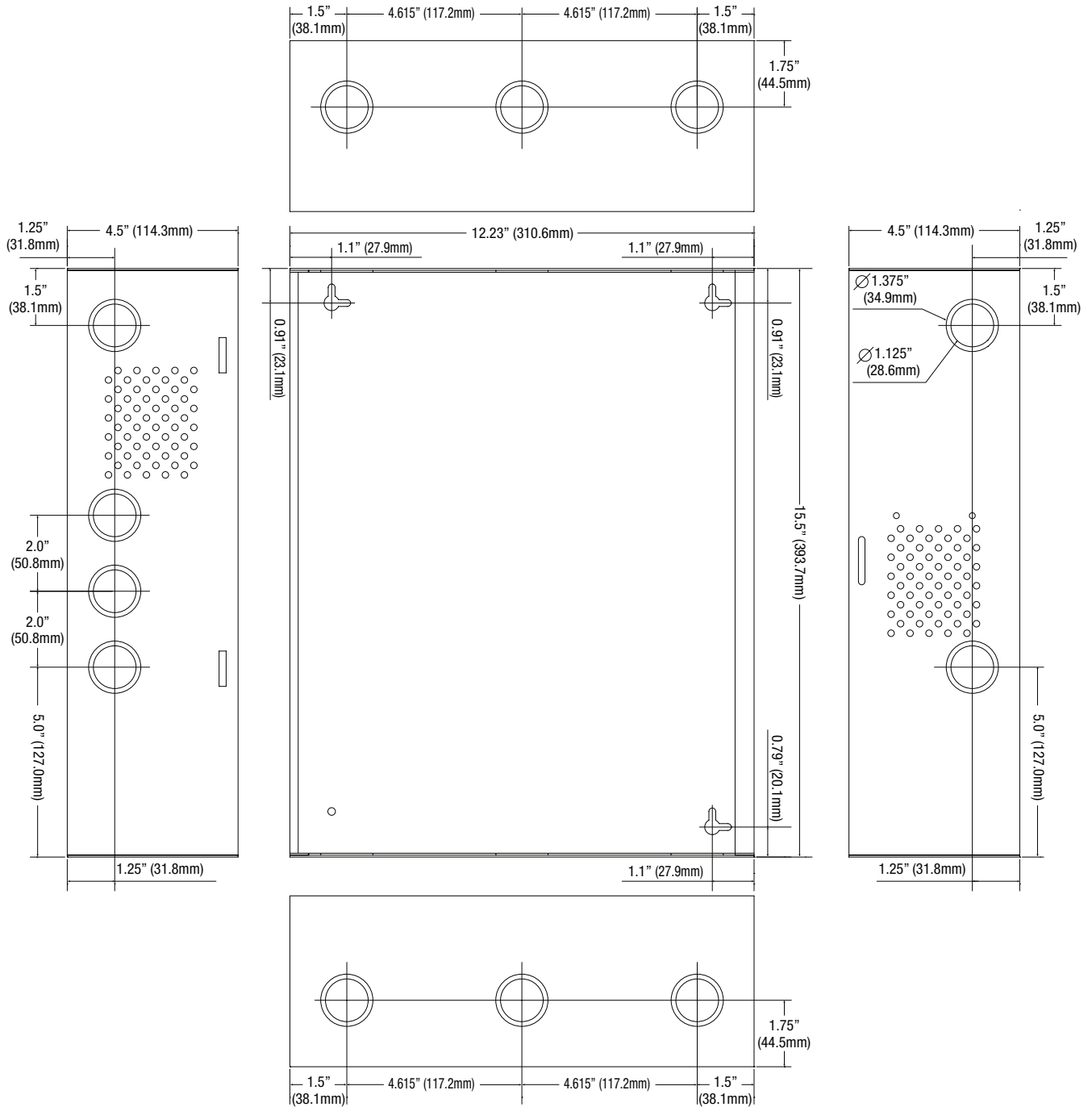
Altronix Corporation | 140 58th St | Brooklyn, NY 11220 USA

phone: +1 718.567.8181 | fax: +1 718.567.9056 | email: info@altronix.com | www.altronix.com

## Dimensions and Drawing

SMP3PMCTXX Dimensions (H x W x D approximate)

15.5" x 12" x 4.5" (393.7mm x 304.8mm x 114.3mm)



### Lifetime Warranty

Altronix Corporation | 140 58th St | Brooklyn, NY 11220 USA

phone: +1 718.567.8181 | fax: +1 718.567.9056 | email: info@altronix.com | www.altronix.com