

ALTV2432220 Series CCTV Power Supplies

Installation Guide

Models Include:

ALTV2432220

- 24VAC @ 8A (200VA) or
28VAC @ 7A (200VA).
- *Thirty-two (32) Fuse Protected Outputs.*

ALTV2432350220

- 24VAC @ 14A (350VA) or
28VAC @ 12.5A (350VA).
- *Thirty-two (32) Fuse Protected Outputs.*

ALTV2432600220

- 24VAC @ 28A (700VA) or
28VAC @ 25A (700VA).
- *Thirty-two (32) Fuse Protected Outputs.*

ALTV2432CB220

- 24VAC @ 8A (200VA) or
28VAC @ 7A (200VA).
- *Thirty-two (32) PTC Protected Outputs.*

ALTV2432350CB220

- 24VAC @ 14A (350VA) or
28VAC @ 12.5A (350VA).
- *Thirty-two (32) PTC Protected Outputs.*

ALTV2432600CB220

- 24VAC @ 28A (700VA) or
28VAC @ 25A (700VA).
- *Thirty-two (32) PTC Protected Outputs.*



Overview:

Altronix ALTV2432220 Series CCTV Power Supplies provide 24VAC or 28VAC distributed via thirty-two (32) fuse or PTC protected outputs for powering CCTV cameras, heaters and other video accessories.

Thirty-Two (32) Output ALTV2432220 Reference Chart:

Altronix Model Number	Output Voltage	Total Output Current (Power)	Number of Outputs	PTC Protected Outputs (auto-resettable)	Fuse Protected Outputs	Output Current (max per output)	220VAC 50/60Hz Input Current
ALTV2432220	24VAC	8A	32	–	✓	3.5A	1.5A
	28VAC	7A		✓	–	2.5A	
ALTV2432CB220	24VAC	8A		–	✓	3.5A	
	28VAC	7A		✓	–	2.5A	
ALTV2432350220	24VAC	14A		–	✓	3.5A	
	28VAC	12.5A		✓	–	2.5A	
ALTV2432350CB220	24VAC	14A		–	✓	3.5A	
	28VAC	12.5A		✓	–	2.5A	
ALTV2432600220	24VAC	28A		–	✓	3.5A	3A
	28VAC	25A		✓	–	2.5A	
ALTV2432600CB220	24VAC	28A		–	✓	3.5A	
	28VAC	25A		✓	–	2.5A	

Specifications:

Agency Listing:

- CE European Conformity.

Input:

- 220VAC, 50/60Hz.

Output:

- Thirty-two (32) fuse or PTC protected outputs.
- 24VAC or 28VAC supply current.
- Outputs are rated @ 3.5A (fused) or 2.5A (PTC).
- Surge suppression.

Features:

- Secondary fuse rated @ 10A/250V.
- AC power LED.
- Power ON/OFF switch.
- Spare fuses provided.
(all models w/primary and/or secondary fuses).

Enclosure Dimensions:

13.5" x 13" x 3.25"
(342.9mm x 330.2mm x 82.6mm).

Installation Instructions:

1. Mount unit in the desired location. Mark and predrill holes in the wall to line up with the top two keyholes in the enclosure. Install two upper fasteners and screws in the wall with the screw heads protruding. Place the enclosure's upper keyholes over the two upper screws; level and secure. Mark the position of the lower two holes. Remove the enclosure. Drill the lower holes and install the fasteners. Place the enclosure's upper keyholes over the two upper screws. Install the two lower screws and make sure to tighten all screws (*Enclosure Dimensions, pg. 8*). Secure enclosure to earth ground.
2. Turn main switch on the unit OFF (*Figs. 1-3, pgs. 4-6*).
3. All units are factory set for 24VAC operation.
For 28VAC operation, adjust unit prior to mounting and applying power as follows:
Change the wire position so that the black wire [28V] is connected to the terminal marked [P] and the yellow wire [24V] is connected to the terminal marked [S].
4. Connect unswitched AC circuit (220VAC, 50/60Hz) as follows: Green branch wire (ground) connects to the terminal marked ⊕, Line connects to the terminal marked [L], and Neutral connects to the terminal marked [N] of the Inlet Appliance Connector. (*Figs. 1-5, pgs. 4-6*).
Use 18 AWG or larger for all power connections.
5. Turn main switch on the unit to the ON (RESET) position (*Figs. 1-3, pgs. 4-6*).
6. Measure output voltage before connecting devices. This helps avoiding potential damage.
CAUTION: Determine the maximum operating voltage of the equipment being powered before adjusting the output voltage.

7. Turn main switch on the unit OFF (Figs. 1-3, pgs. 4-6).
8. Connect devices to the terminals marked [1P - 1N] through [16P - 16N] on PD16W/PD16WCB board (Figs. 1-3, pgs. 4-6), carefully observing polarity. Terminals marked [1P - 16P] are of the same polarity.
9. Turn main switch on the unit to the ON (RESET) position (Figs. 1-3, pgs. 4-6).
10. Green LED(s) will illuminate when unit is powered.
11. Upon completion of the wiring secure enclosure door with screws (supplied).

**Caution: Equipment to be installed / serviced by authorized / trained personnel only.
Shut branch circuit power before installing / servicing equipment.**

WARNING: To reduce the risk of fire or electric shock, do not expose the unit to rain or moisture. This installation should be made by qualified service personnel and should conform to the National Electrical Code and all local codes.

Terminal Identification:

PD16W/PD16WCB - Distribution Module

1P - 16P	AC output.
1N - 16N	AC output.



The lightning flash with arrowhead symbol within an equilateral triangle is intended to alert the user to the presence of an insulated DANGEROUS VOLTAGE within the product's enclosure that may be of sufficient magnitude to constitute an electric shock.



The exclamation point within an equilateral triangle is intended to alert the user to the presence of important operating and maintenance (servicing) instructions in the literature accompanying the appliance.

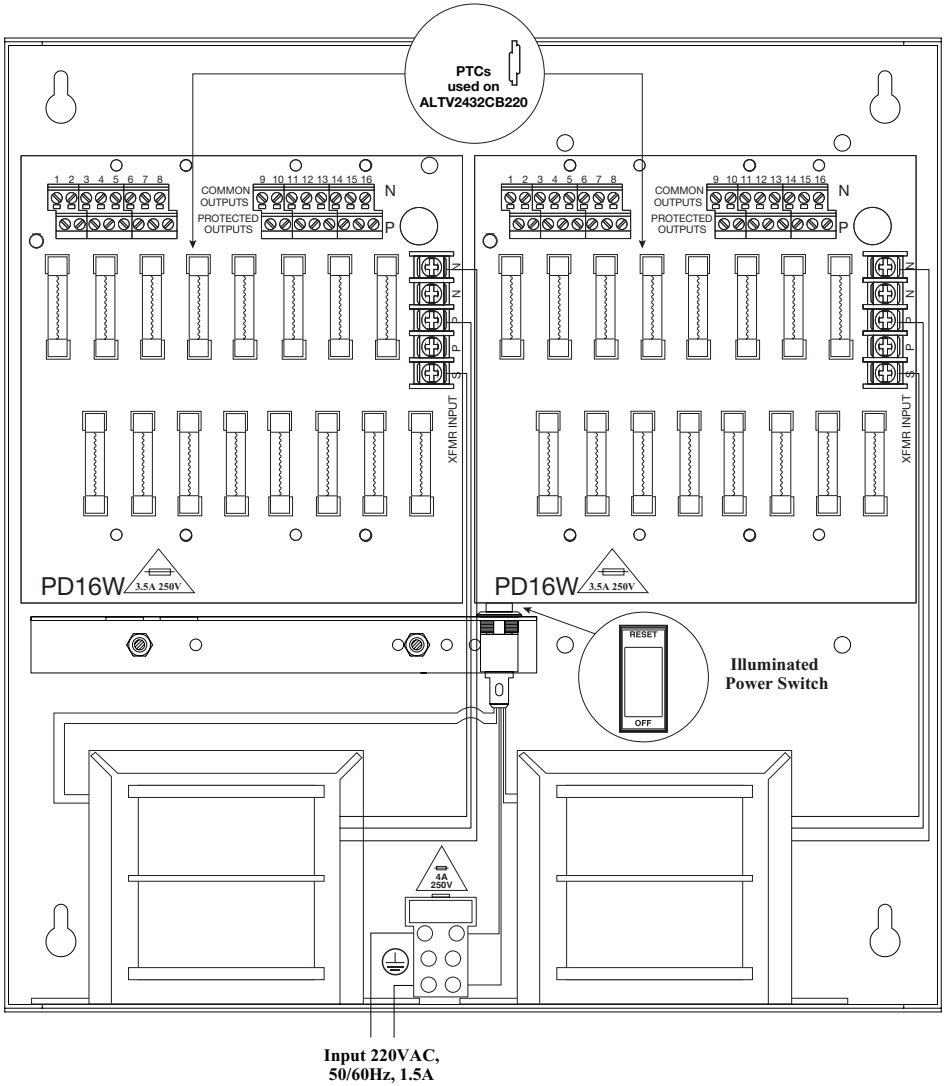


CAUTION
RISK OF ELECTRIC SHOCK
DO NOT OPEN

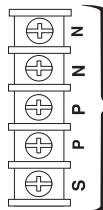
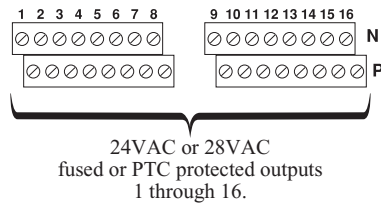


CAUTION: To reduce the risk of electric shock do not open enclosure. There are no user serviceable parts inside. Refer servicing to qualified service personnel.

Fig. 1 - ALTV2432220 and ALTV2432CB220



Terminal Blocks for Fig. 1



Input:
24VAC or
28VAC
operation.

Voltage Selection Configuration

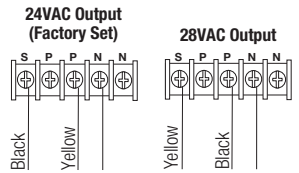
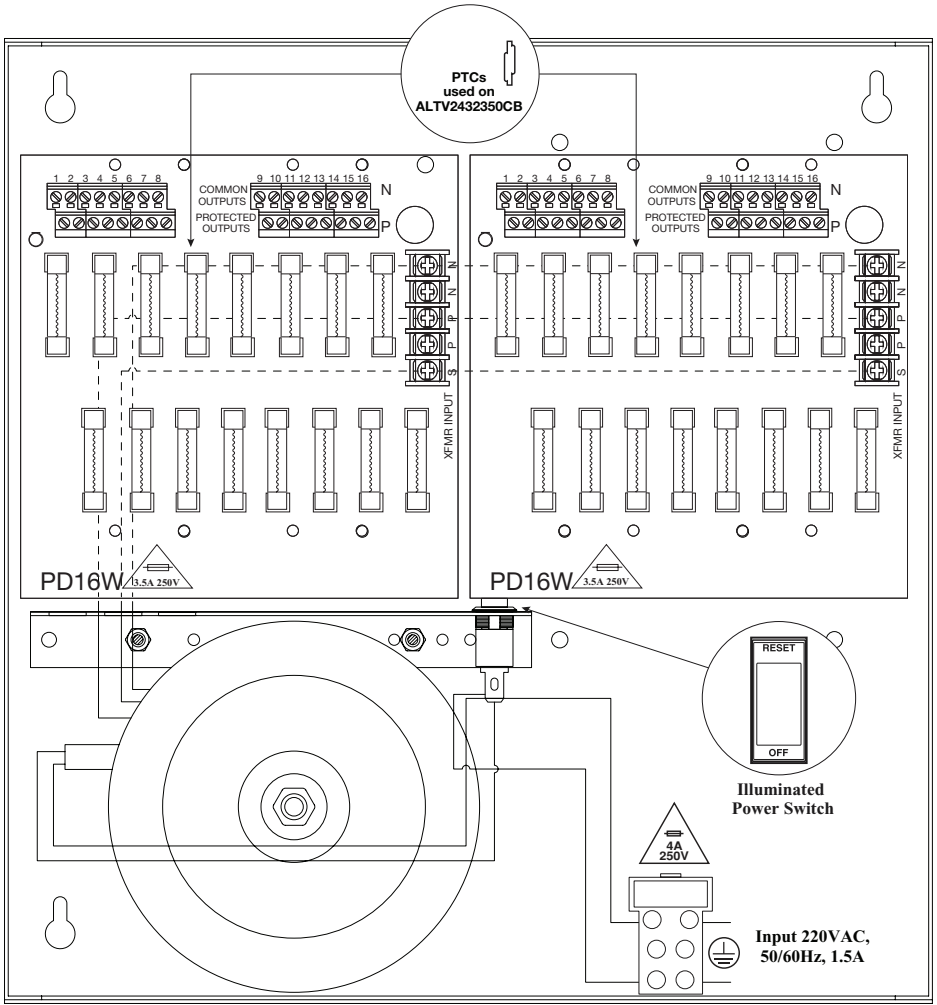
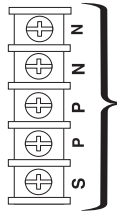
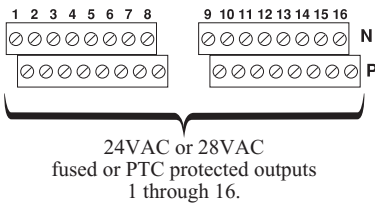


Fig. 2 - ALTV2432350220 and ALTV2432350CB220



Terminal Blocks for Fig. 2



Voltage Selection Configuration

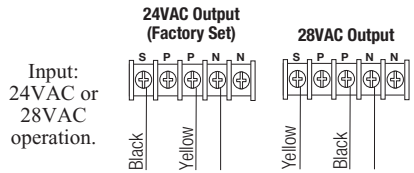
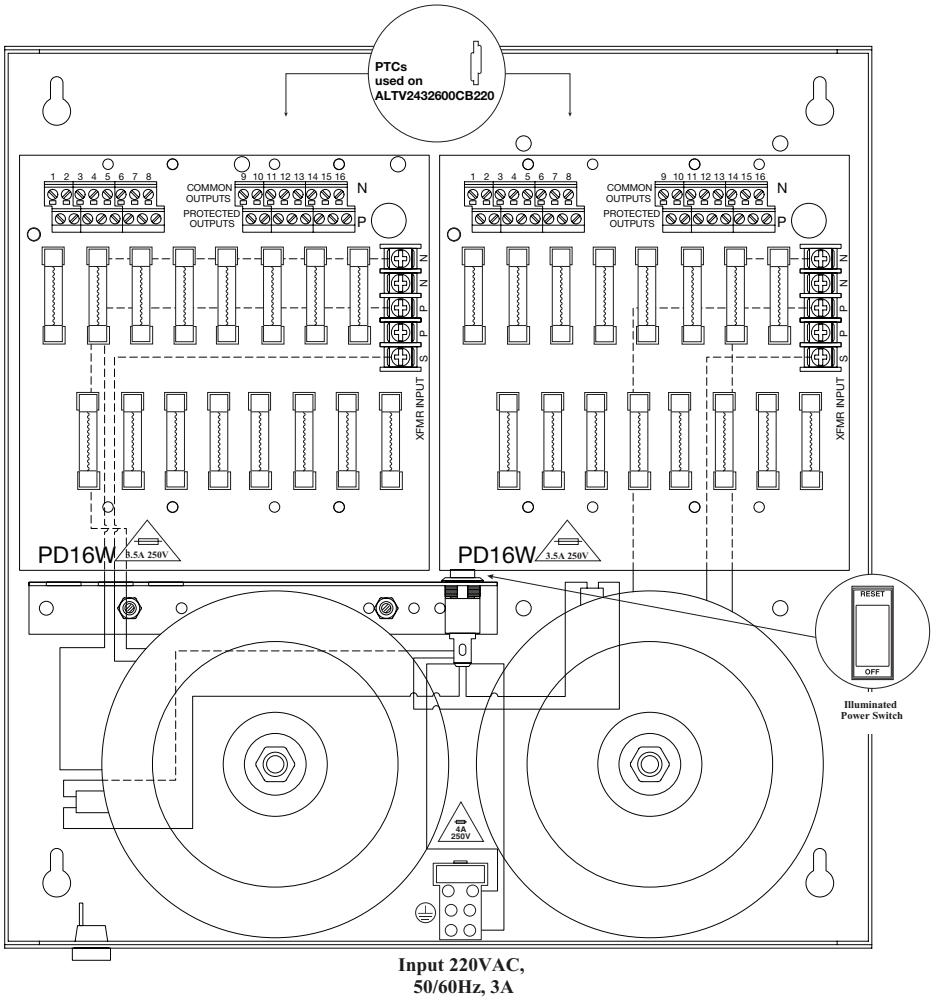
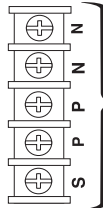
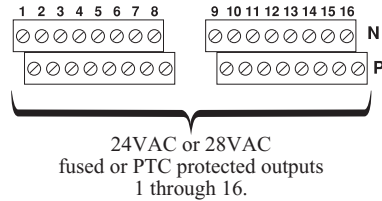


Fig. 3 - ALTV2432600220 and ALTV2432600CB220

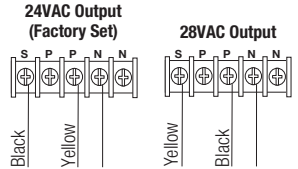


Terminal Blocks for Fig. 3



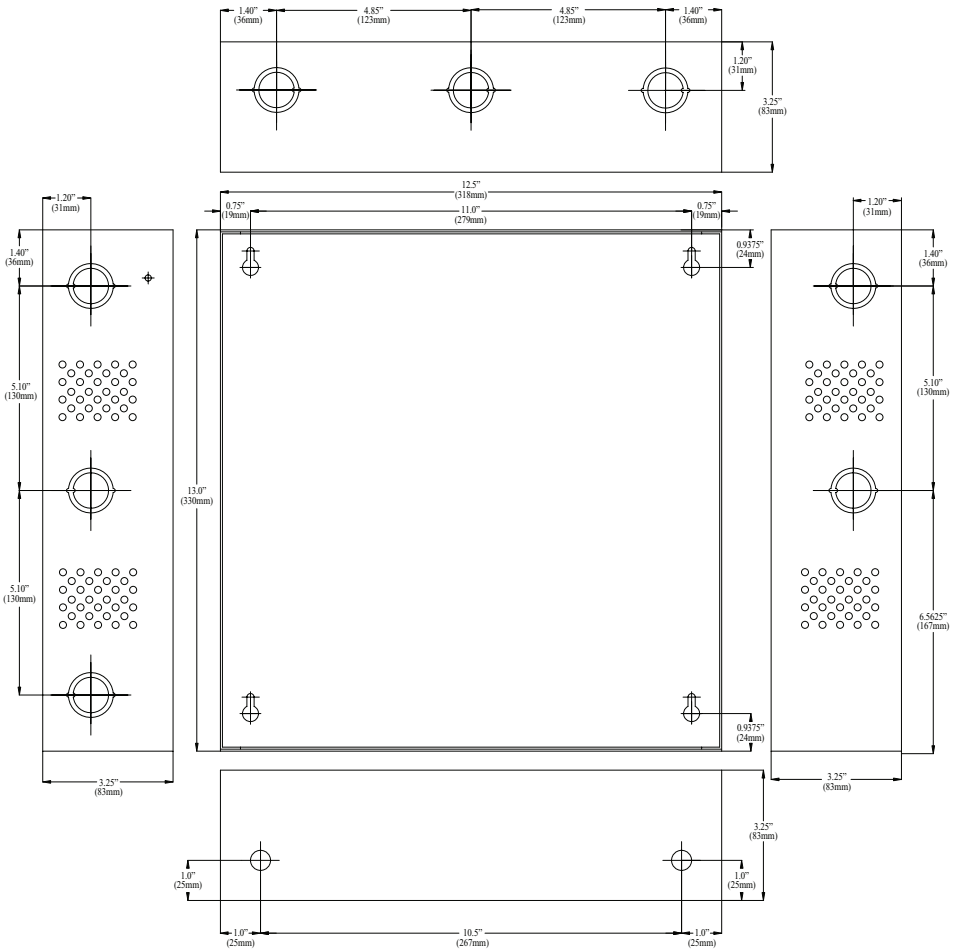
Input:
24VAC or
28VAC
operation.

Voltage Selection Configuration



Notes:

Enclosure Dimensions (H x W x D):
 13.5" x 13" x 3.25" (342.9mm x 330.2mm x 82.6mm)



Altronix is not responsible for any typographical errors.

140 58th Street, Brooklyn, New York 11220 USA | phone: 718-567-8181 | fax: 718-567-9056
 website: www.altronix.com | e-mail: info@altronix.com | Lifetime Warranty | Made in U.S.A.
 HALTV2432220 Series E10R