

R248220 Series

Rack Mount CCTV Power Supplies

Installation Guide

Models Include:

R248220

- 24VAC @ 4A (100VA) or 28VAC @ 3.5A (100VA).
- Eight (8) Fuse Protected Outputs.

R248300220

- 24VAC @ 14A (350VA) or 28VAC @ 12.5A (350VA).
- Eight (8) Fuse Protected Outputs.

R248600220

- 24VAC @ 25A (600VA) or 28VAC @ 20A (600VA).
- Eight (8) Fuse Protected Outputs.

R248CB220

- 24VAC @ 4A (100VA) or 28VAC @ 3.5A (100VA).
- Eight (8) PTC Protected Outputs.

R248300CB220

- 24VAC @ 14A (350VA) or 28VAC @ 12.5A (350VA).
- Eight (8) PTC Protected Outputs.

R248600CB220

- 24VAC @ 25A (600VA) or 28VAC @ 20A (600VA).
- Eight (8) PTC Protected Outputs.



Overview:

Altronix R248220 Series Rack Mount CCTV Power Supplies provide 24VAC or 28VAC distributed via eight (8) fuse or PTC protected outputs for powering CCTV cameras, heaters, and other video accessories.

Eight (8) Output Rack Mount Configuration Reference Chart:

Altronix Model Number	Total Output Current (Power)	Output Voltage (VAC)	Number of Outputs	PTC Protected Outputs (auto-resettable)	Fuse Protected Outputs	Individual Output Current (max per output, not to exceed total output current)	220VAC 50/60Hz Input Current
R248220	4A (100VA)	24	8	-	✓	3.5A	0.9A
	3.5A (100VA)	28					
R248CB220	4A (100VA)	24	8	✓	-	2.5A	0.9A
	3.5A (100VA)	28					
R248300220	14A (350VA)	24	8	-	✓	3.5A	2.7A
	12.5A (350VA)	28					
R248300CB220	14A (350VA)	24	8	✓	-	2.5A	2.7A
	12.5A (350VA)	28					
R248600220	25A (600VA)	24	8	-	✓	5A	3A
	20A (600VA)	28					
R248600CB220	25A (600VA)	24	8	✓	-	2.5A	3A
	20A (600VA)	28					

Specifications:

Agency Listings:

- CE European Conformity

Output:

- 24VAC or 28VAC outputs.
- Surge suppression.
- Filtered and electronically regulated output.
- Short circuit and thermal overload protection.

Visual Indicators:

- Individual power LED indicators.
- Illuminated power disconnect circuit breaker with manual reset.

Features:

- Unit maintains camera synchronization.
- Ease of installation saves time and eliminates costly labor.
- Removable terminal blocks with locking screw flanges.
- Spare fuses provided.

Rack Dimensions (H x W x D):

- 2U rack mount chassis for use in standard EIA 19" rack.
3.26" x 19.125" x 8.5" (83mm x 486mm x 216mm)

Installation Instructions:

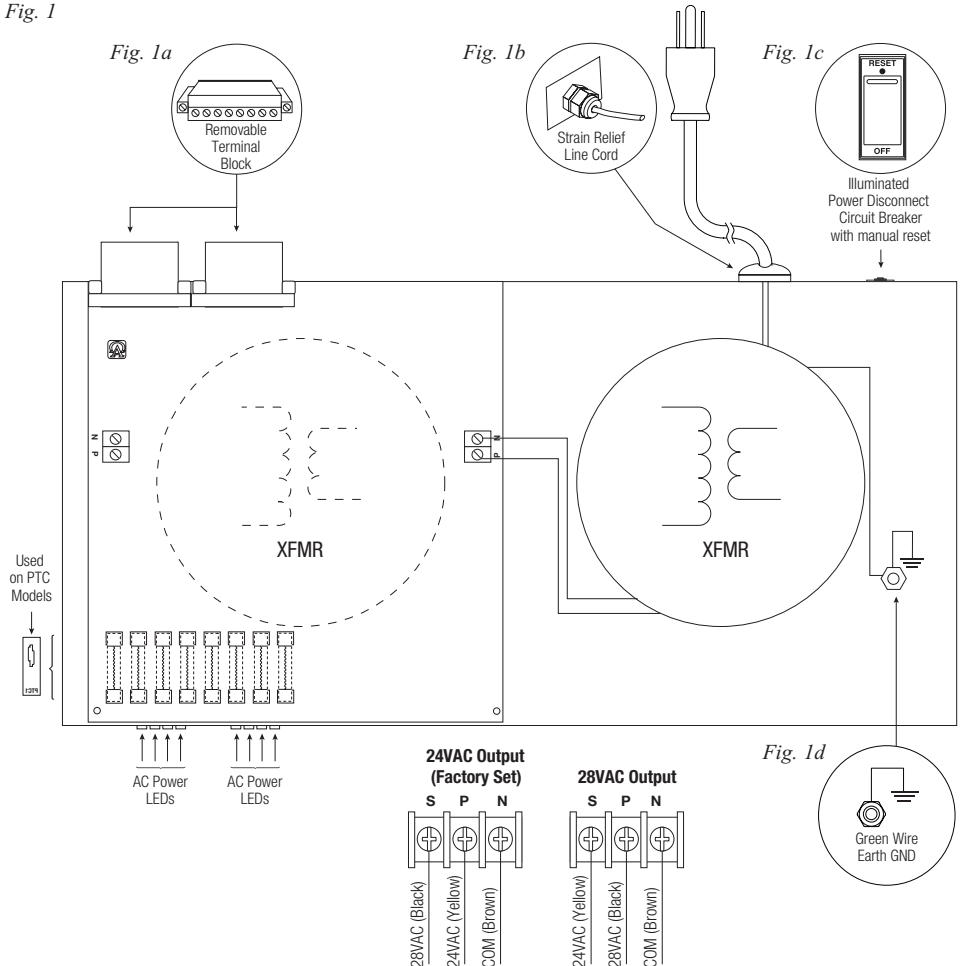
- The unit is factory set for 24VAC operation.
For 28VAC operation adjust unit prior to mounting and applying power as follows:
 - Open bottom of the unit by removing six (6) screws (*Rack Mechanical Drawing & Dimensions, pg. 4*).
 - Change the wire position so that the black wire [28V] is connected to the terminal marked [P] and the yellow wire [24V] is connected to the terminal marked [S] (*Fig. 1, pg. 3*).
 - After securing all wires for proper voltage place bottom panel back on the unit and fasten with the six (6) screws.
- Mount unit in the desired rack location (Space unit at least 3" from any video monitors).
- Set power switch on the back of the unit to the OFF position (*Fig. 1c, pg. 3*).
- Plug power cord into grounded 220VAC, 50/60 Hz receptacle (*Fig. 1b, pg. 3*).
- Set power switch on the back of unit to the ON (RESET) position and measure output voltage before connecting devices (*Fig. 1c, pg. 3*). This helps avoiding potential damage.
All terminals with common suffix (P) "1P, 2P..." are the same polarity.
- Set power switch on the back of the unit to the OFF position (*Fig. 1c, pg. 3*).
- Connect devices to the removable terminal blocks marked [1P & 1N] through [8P & 8N] (*Fig. 1a, pg. 3*).
When wiring is completed on terminal blocks they can be locked down by tightening screw flanges.
- Upon completion of the wiring, set power switch on the back of the unit to the ON (RESET) position (*Fig. 1c, pg. 3*).

9. Green power LEDs on faceplate will illuminate when AC power is present. When an output is in a trouble condition (blown fuse or tripped PTC) the corresponding LED will not be illuminated (*Fig. 1, pg. 3*).
 - a. Blown fuse (R248220, R248300220, and R248600220) - set power switch on the back of the unit to the OFF position (*Fig. 1c, pg. 3*). Remove front faceplate to access fuses. Replace with fuses rated @ 3.5A/250VA (R248220 and R248300220). Replace with fuses rated @ 5A/32VA (R248600220).
 - b. Tripped PTC (R248CB220, R248300CB220, and R248600220) - to reset PTC, set power switch on the back of the unit to the OFF position. After approximately 30 secs. set power switch to the ON (RESET) position (*Fig. 1c, pg. 3*).
 10. Power switch with built-in circuit breaker:
 - OFF position - Switch not illuminated. Outputs not powered.
 - RESET (ON) position - Switch illuminated. Outputs powered.
 - Circuit breaker tripped - Switch not illuminated. Power LEDs on faceplate are not illuminated. Outputs not powered. To reset circuit breaker set power switch to the ON (RESET) position (*Fig. 1c, pg. 3*).
- Note:** Do not exceed units electrical load ratings as indicated in reference chart (*pg. 2*).
Do not place mechanical load on unit. Data racks should always be properly ventilated.
Unit is designed optimally for normal data room office installations.

CAUTION: Equipment to be installed / serviced by authorized / trained personnel only.
Shut branch circuit power before installing / servicing equipment.

WARNING: To reduce the risk of fire or electric shock, do not expose the unit to rain or moisture.
This installation should be made by qualified service personnel and should conform to the National Electrical Code and all local codes.

Fig. 1





The lightning flash with arrowhead symbol within an equilateral triangle is intended to alert the user to the presence of an insulated **DANGEROUS VOLTAGE** within the product's enclosure that may be of sufficient magnitude to constitute an electric shock.



The exclamation point within an equilateral triangle is intended to alert the user to the presence of important operating and maintenance (servicing) instructions in the literature accompanying the appliance.



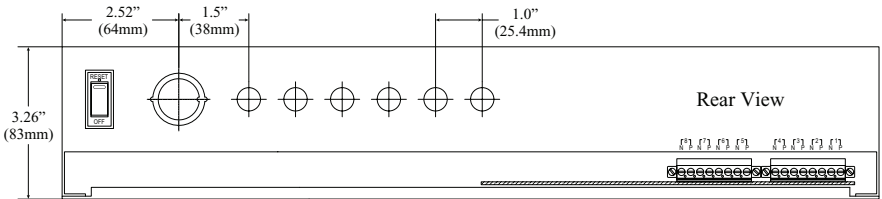
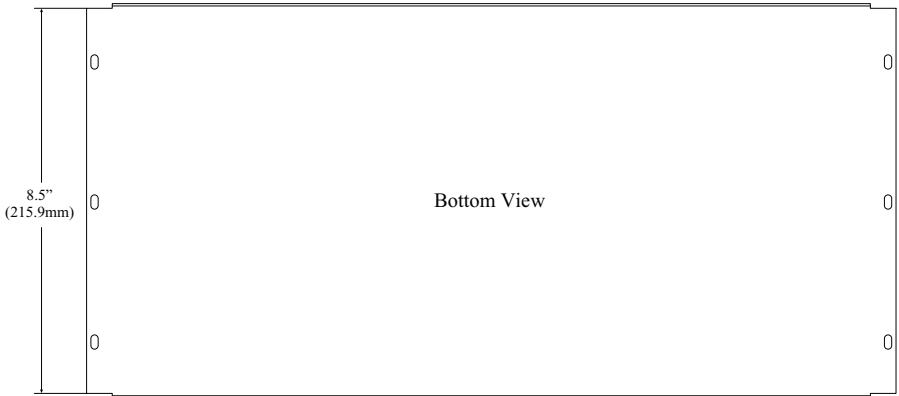
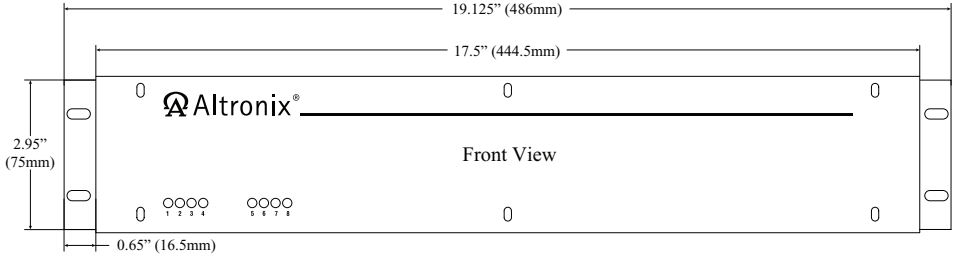
CAUTION
RISK OF ELECTRIC SHOCK
DO NOT OPEN



CAUTION: To reduce the risk of electric shock do not open enclosure. There are no user serviceable parts inside. Refer servicing to qualified service personnel.

Rack Mechanical Drawing and Dimensions:

3.26" x 19.125" x 8.5" (83mm x 486mm x 216mm)



Altronix is not responsible for any typographical errors.

140 58th Street, Brooklyn, New York 11220 USA | phone: 718-567-8181 | fax: 718-567-9056
 website: www.altronix.com | e-mail: info@altronix.com | Lifetime Warranty | Made in U.S.A.
 IIR248220 Rack Mount Series E07R