

R615DC8220 Series Rack Mount DC CCTV Power Supplies

Installation Guide

Models Include:

R615DC8220

- 6-15VDC @ 4A.
- Eight (8) Fuse Protected Outputs.

R615DC8CB220

- 6-15VDC @ 4A.
- Eight (8) PTC Protected Outputs.

Overview:

Altronix R615DC8220 Series rack mount CCTV Power Supplies are designed with eight (8) individually fuse or PTC protected outputs for powering CCTV cameras and other video accessories. They provide 6VDC-15VDC distributed via eight (8) outputs with a total of up to 4A total continuous supply current.

Eight (8) Output Rack Mount Configuration Reference Chart:

Altronix Model Number	Total Output Current (Power)	Output Voltage	Number of Outputs	PTC Protected Outputs (auto-resettable)	Fuse Protected Outputs	Output Current (max per output)	220VAC 50/60Hz Input Current
R615DC8220	4A	6-15VDC	8	—	✓	3.5A	0.5A
R615DC8CB220				✓	—	2.5A	

Specifications:

Input:

- 220VAC (working range 198VAC - 256VAC), 50/60Hz, 0.5A.

Output:

- Eight (8) fuse or PTC protected outputs.
- 6-15VDC @ 4A total output current.
(0.5A per device, 3.5A (fused) or 2.5A (PTC) max.)
- Outputs are rated @ 3.5A (fused) or 2.5A (PTC).
- Filtered and electronically regulated outputs.
- Short circuit and thermal overload protection.

Features:

- Eight (8) power LEDs.
- Illuminated master power disconnect circuit breaker with manual reset.
- 3-wire grounded line cord.
- Removable terminal blocks with locking screw flange.
- Spare fuses provided.

Enclosure Dimensions (H x W x D approx.):

3.26" x 19.125" x 8.5" (83mm x 486mm x 216mm)

Installation Instructions:

1. Unit is factory set at 12VDC. To adjust the output voltage remove the bottom cover to access trimpot on the power supply board (*Fig. 1b, pg. 2*).
2. Mount unit in the desired rack location. Space unit at least 3" from any video monitors.
3. Set power switch on the back of the unit to the OFF position (*Fig. 1d, pg. 2, Fig. 2, pg. 4*).
4. Plug power cord into a grounded 220VAC, 50/60 Hz receptacle (*Fig. 1c, pg. 2*).
5. Set power switch to the ON (RESET) position and measure output voltage before connecting devices. This helps avoiding potential damage.
6. Set power switch on the back of the unit to the OFF position.
7. Connect devices to the removable terminal blocks marked [1P & 1N] through [8P & 8N] (*Fig. 1a, pg. 2*). When wiring is completed on the terminal blocks they can be locked down by tightening screw flanges. All terminals with common suffix (P) "1P, 2P..." are the same polarity (positive). All terminals with common suffix (N) "1N, 2N..." are the same polarity (negative).
8. Upon completion of the wiring, set power switch on back of unit to the ON (RESET) position.
9. Green power LEDs on faceplate will illuminate when AC power is present. When an output is in a trouble condition (blown fuse or tripped PTC), the corresponding LED will not be illuminated (*Fig. 1*).
 - a. Blown fuse (R615DC8220) - Set power switch on the back of the unit to the OFF position. Remove front faceplate to access fuses. Replace with fuses rated @ 3.5A/250VA (Altronix model # Fuse1).
 - b. Tripped PTC (R615DC8CB220) - To reset PTC, set power switch on back of unit to the OFF position. After approximately 30 secs. set power switch to the ON (RESET) position.
10. Power switch with built-in circuit breaker:
 - OFF position - Switch not illuminated. Outputs not powered.
 - RESET (ON) position - Switch illuminated. Outputs powered.
 - Circuit breaker tripped - Switch not illuminated. Power LEDs on faceplate are not illuminated. Outputs not powered.
 - To reset circuit breaker set power switch to the ON (RESET) position (*Fig. 1d, pg. 2, Fig. 2, pg. 4*).

WARNING: To reduce the risk of fire or electric shock, do not expose the unit to rain or moisture. This installation should be made by qualified service personnel and should conform to the National Electrical Code and all local codes.

CAUTION: Equipment to be installed / serviced by authorized / trained personnel only. Shut branch circuit power before installing / servicing equipment.

Terminal Identification:

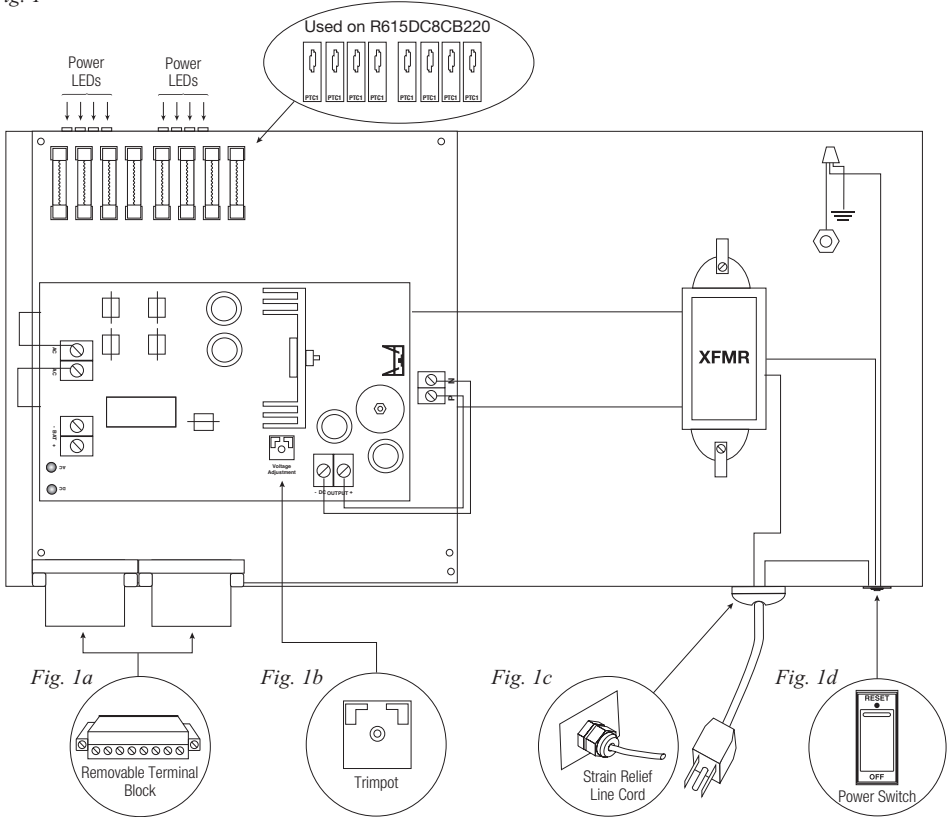
AL400ULB - Power Supply Board

Terminal Legend	Function/Description
AC/AC	Low voltage AC input (24VAC 100VA) Altronix part #T24130/220
+ DC –	6VDC-15VDC @ 4A total continuous output.

PD8/PD8CB - Distribution Module

Terminal Legend	Function/Description
1P - 8P	Positive DC output
1N - 8N	Negative DC output

Fig. 1



The lightning flash with arrowhead symbol within an equilateral triangle is intended to alert the user to the presence of an insulated **DANGEROUS VOLTAGE** within the product's enclosure that may be of sufficient magnitude to constitute an electric shock.



The exclamation point within an equilateral triangle is intended to alert the user to the presence of important operating and maintenance (servicing) instructions in the literature accompanying the appliance.



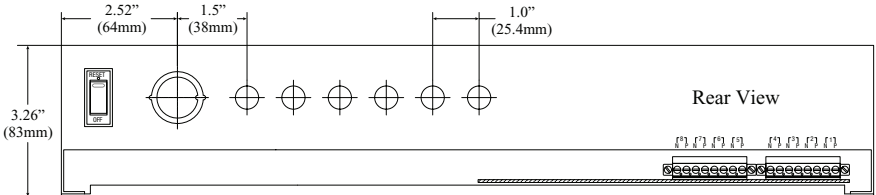
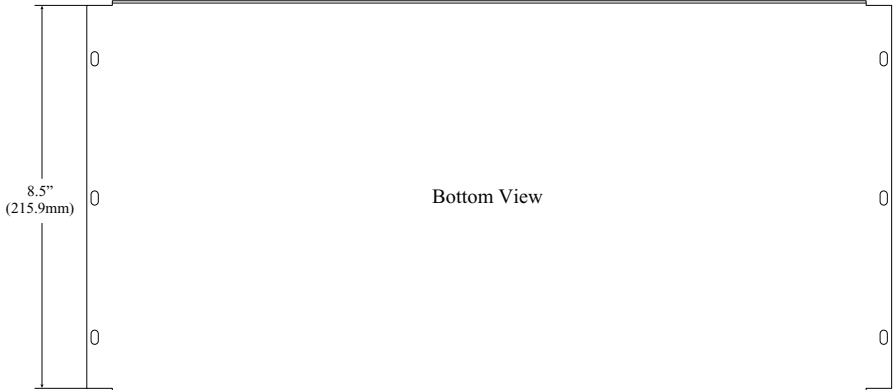
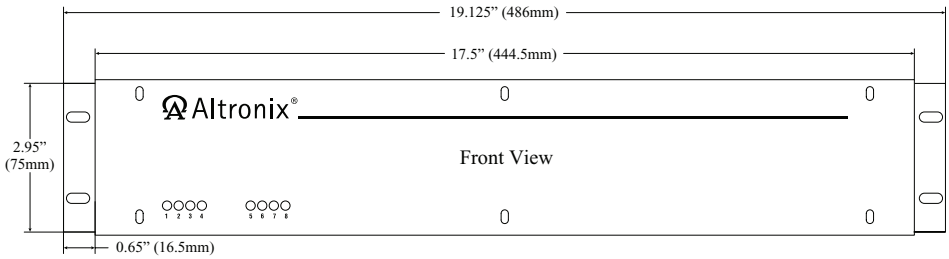
CAUTION
RISK OF ELECTRIC SHOCK
DO NOT OPEN



CAUTION: To reduce the risk of electric shock do not open enclosure. There are no user serviceable parts inside. Refer servicing to qualified service personnel.

Enclosure Dimensions (H x W x D approximate):

3.26" x 19.125" x 8.5" (83mm x 486mm x 216mm)



Altronix is not responsible for any typographical errors.

140 58th Street, Brooklyn, New York 11220 USA | phone: 718-567-8181 | fax: 718-567-9056
website: www.altronix.com | e-mail: info@altronix.com | Lifetime Warranty | Made in U.S.A.
IIR615DC8220 Series E22R



R615DC8220 Series