

WPTV244UL Series

CCTV Outdoor Power Supplies

Models Include:

WPTV244175UL

- 24VAC @ 7A (175VA) or 28VAC @ 6.25A (175VA).
- Four (4) Protected Outputs

WPTV244300UL

- 24VAC @ 12.5A (300VA) or 28VAC @ 10A (280VA).
- Four (4) Protected Outputs

Installation Guide



More than just power.™

Rev. 021104

Installing Company: _____ Service Rep. Name: _____

Address: _____ Phone #: _____

Overview:

Altronix WPTV244UL Series outdoor CCTV Power Supplies provide power via four (4) protected outputs for CCTV Cameras, heaters, and other video accessories.

Units are UL Listed UL2044 “U.S. and Canada for CCTV Equipment.”

Four (4) Output WPTV Reference Chart:

Altronix Model Number	Output Voltage	Total Output Current	Number of Outputs	PTC Protected Auto-Resettable Outputs (Class 2 power-limited)	Fuse Protected Outputs	Output Current (max per output) PTC Protected	Fuse Protected Output Rating	115VAC 50/60Hz Input Current
WPTV244175UL	24VAC	7A	4	3	1	2.5A (1A per output max)	10A/250VA	1.76A
	28VAC	6.25A						
WPTV244300UL	24VAC	12.5A	4	3	1	2.5A (1A per output max)	15A/32VA	2.7A
	28VAC	10A						

Specifications:

Agency Listings:

- UL Listed for Commercial CCTV Equipment (UL2044).
- CUL Listed - CSA Standard C22.2 No.1-98, Audio, Video and Similar Equipment.
- CE European Conformity

Input:

- 115VAC, 50/60Hz.

Output:

- Four (4) protected outputs:
 - One (1) fuse protected non power-limited output.
 - Three (3) Class 2 Rated PTC protected power-limited outputs rated @ 2.5A.

Features:

- AC power LED.
- Illuminated power disconnect circuit breaker with manual reset.
- Surge suppression.
- Spare fuses provided.
- NEMA 4 Rated enclosure for outdoor use.

Enclosure Dimensions (H x W x D approx.):

12" x 8" x 6" (304.8mm x 203.2mm x 152.4mm).

Installation Instructions:

Unit should be installed in accordance with The National Electrical Code and all applicable Local Regulations.

1. Remove back plate inside enclosure by removing the four (4) mounting screws (*Figs. 2a, 3a, pgs. 4, 5*).
2. Mark and drill desired knockouts on the enclosure to facilitate wiring (*Fig. 1, pg. 3*).
3. Secure back plate inside enclosure with the four (4) mounting screws (*Figs. 2a, 3a, pgs. 4, 5*).
4. Unit can be wall or pole mounted.

Wall Mount:

- Mark and drill holes to line up with the top and bottom holes of the enclosure flange.
- Secure enclosure with appropriate fasteners (*Enclosure Dimensions, pg. 8*).

Pole Mount:

- Refer to the detailed pole mount instructions (*pg. 6*).

Secure enclosure to earth ground.

5. Set power switch to OFF position (*Figs. 2b, 3b, pgs. 4, 5*).
6. All units are factory set for 24VAC operation.

For 28VAC operation adjust unit prior to mounting and applying power as follows: change the wire position so that the black wire [28V] is connected to the terminal marked [P] and the yellow wire [24V] is connected to the terminal marked [S].

Keep power-limited (PTC protected outputs only) wiring separate from non power-limited wiring. Minimum 0.25" spacing must be provided. Use separate entries.

7. Measure output voltage before connecting devices. This helps avoiding potential damage. Terminals marked [1P - 4P] are of the same polarity.
CAUTION: Determine the maximum operating voltage of the equipment being powered before adjusting the output voltage.
8. Connect devices to terminals marked [1P - 1N] through [3P - 3N] on board (Figs. 2, 3, pgs. 4, 5), carefully observing polarity. Connect high current device to output (4P - 4N).
9. Turn main switch to the ON (RESET) position (Figs. 2b, 3b, pgs. 4, 5).
10. Green LED will illuminate when unit is powered.
11. Upon completion of wiring secure enclosure door with the cam lock (supplied).

CAUTION: Equipment to be installed / serviced by authorized / trained personnel only. Shut branch circuit power before installing / servicing equipment.

WARNING: This installation should be made by qualified service personnel. Unit should be installed in accordance with the National Electrical Codes and all local codes. For continued protection against risk of fire replace all fuses only with the same type and rating (10A/250V for WPTV244175UL or 15A/32V for WPTV244300UL).

Terminal Identification:

PD4A - Power Distribution Module

Terminal Legend	Function/Description
1P - 3P	AC output, PTC protected power-limited outputs, Class 2 rated
1N - 3N	AC output, common
4P	AC output, fused, non power-limited output
4N	AC output, common

Fig. 1

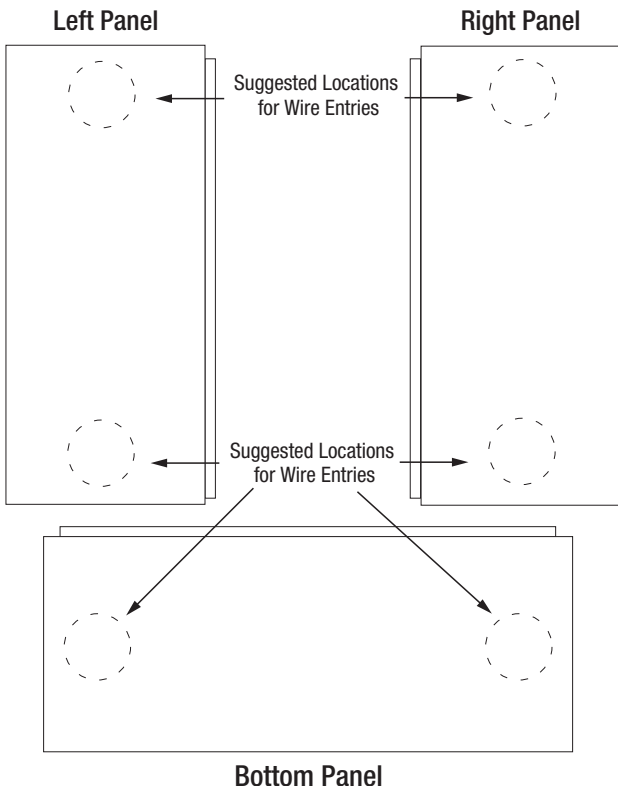
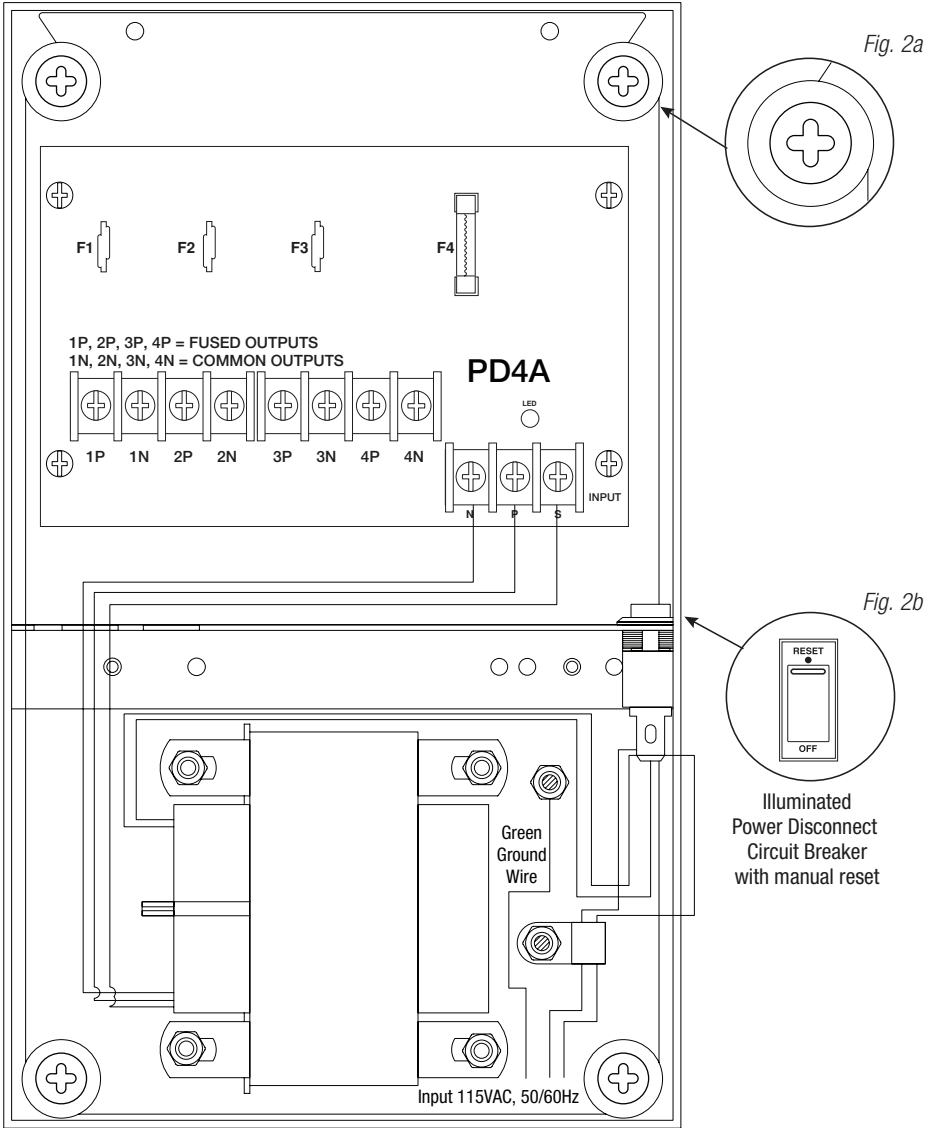
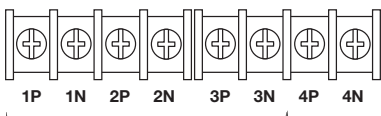


Fig. 2 - WPTV244175UL



Terminal Blocks for Fig. 2

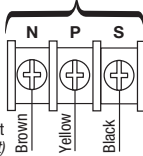
Power Distribution Board Terminals:



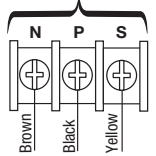
PTC protected outputs 1 through 3.
Power-limited, Class 2 Rated,
2.5A max per output.

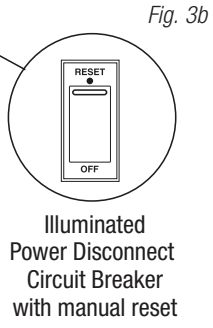
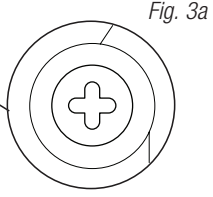
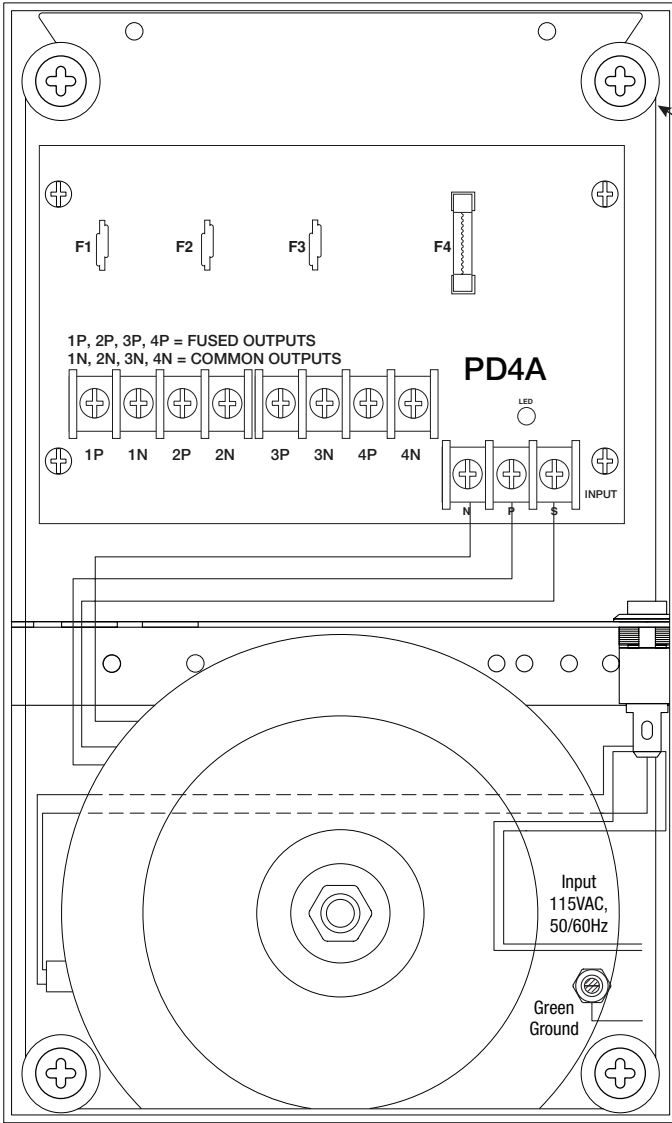
Non power-limited,
fuse protected output
(see Reference Chart)

Input from transformer.
24V Configuration

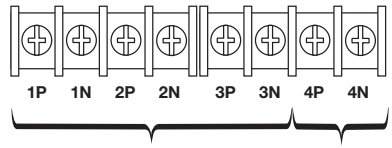


Input from transformer.
28V Configuration





Power Distribution Board Terminals:

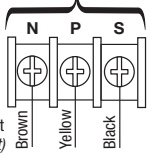


PTC protected outputs 1 through 3.
Power-limited, Class 2 Rated,
2.5A max per output.

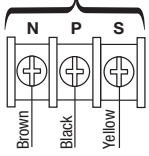
Non power-limited,
fuse protected output
(see Reference Chart)

Terminal Blocks for Fig. 3

Input from transformer.
24V Configuration



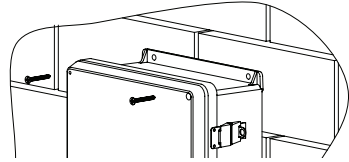
Input from transformer.
28V Configuration



Wall Mount Installation

1. Place unit at desired location and secure with mounting screws (not included) (Fig. 4, pg. 7).

Fig. 4



Pole Mounting Using Optional Pole Mount Kit PMK1 (not included):

This installation should be made by qualified service personnel. This product contains no serviceable parts. PMK1 is intended for use with Altronix outdoor rated power supplies or accessories housed in WP1, WP2, WP3 and WP4 enclosures. Brackets are designed for use with the Wormgear Quick Release Straps (two included).

1. Thread one (1) wormgear quick release strap through the slots on the back of a mounting bracket (Fig. 5, pg. 7).
2. Once the desired height of the top Pole Mount bracket is achieved, tighten the straps down by sliding open end of the strap through the locking mechanism on the strap, then tighten the screw with flat head screwdriver or 5/16" hex socket driver (Fig. 6, pg. 7 and Fig. 8, pg. 7).

Fig. 5

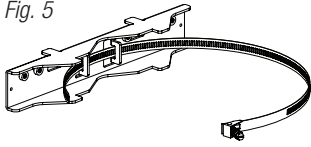


Fig. 6

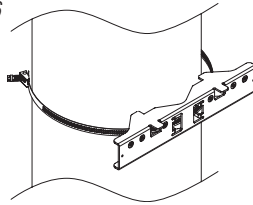
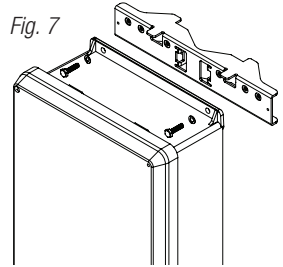


Fig. 7



3. Attach the bottom bracket to the enclosure by inserting bolts through the flange of the enclosure and into the bracket, tightening bolts with a 7/16" hex socket (Fig. 7, pg. 7).
4. Thread the second wormgear quick release strap through the slots on the back of the bottom mounting bracket (Fig. 5, pg. 7).
5. Mount enclosure onto the top bracket by inserting bolts through flange of the enclosure and into the bracket, tightening bolts with a 7/16" hex socket (Fig. 7, pg. 7).
6. Tighten the straps of the bottom bracket down by sliding the open end of the strap through the locking mechanism on the strap, then tighten screw with flat head screwdriver or 5/16" hex socket driver (Fig. 5, pg. 7).
7. Clip excess straps.

Fig. 8

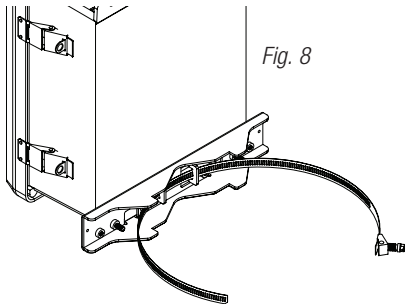


Fig. 9

2" to 8" (50.8mm to 203.2mm)
diameter round pole

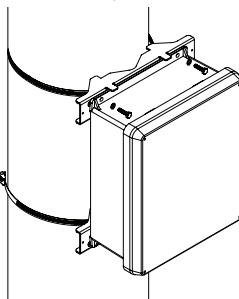
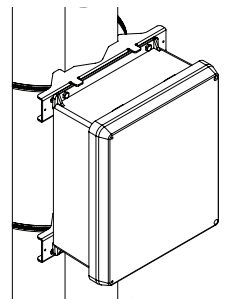


Fig. 9a

5" (127mm) square pole





The lightning flash with arrowhead symbol within an equilateral triangle is intended to alert the user to the presence of an insulated DANGEROUS VOLTAGE within the product's enclosure that may be of sufficient magnitude to constitute an electric shock.



The exclamation point within an equilateral triangle is intended to alert the user to the presence of important operating and maintenance (servicing) instructions in the literature accompanying the appliance.



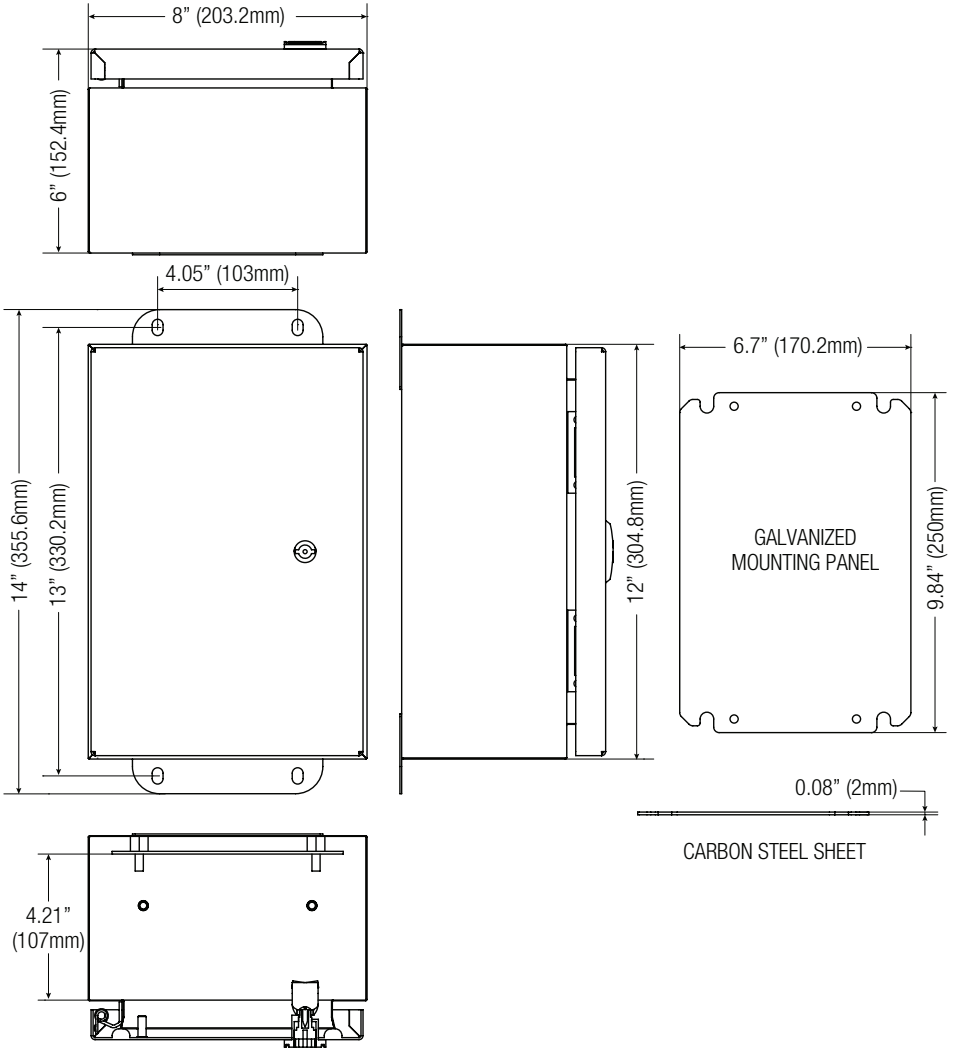
CAUTION
RISK OF ELECTRIC SHOCK
DO NOT OPEN



CAUTION: To reduce the risk of electric shock do not open enclosure. There are no user serviceable parts inside. Refer servicing to qualified service personnel.

Enclosure Dimensions (H x W x D approximate):

12" x 8" x 6" (304.8mm x 203.2mm x 152.4mm)



Altronix is not responsible for any typographical errors.

140 58th Street, Brooklyn, New York 11220 USA | phone: 718-567-8181 | fax: 718-567-9056
website: www.altronix.com | e-mail: info@altronix.com | Lifetime Warranty
IIWPTV244UL Series H2OU

