

# ***WPTV248220 Series CCTV Outdoor Power Supplies***

## ***Installation Guide***

### ***Models Include:***

#### ***WPTV248175220***

- 24VAC @ 7A (175VA) or  
28VAC @ 6.25A (175VA).
- Eight (8) Fuse Protected Outputs.

#### ***WPTV248175CB220***

- 24VAC @ 7A (175VA) or  
28VAC @ 6.25A (175VA).
- Eight (8) PTC Protected Outputs.

#### ***WPTV248300220***

- 24VAC @ 12.5A (300VA) or  
28VAC @ 10A (280VA).
- Eight (8) Fuse Protected Outputs.

#### ***WPTV248300CB220***

- 24VAC @ 12.5A (300VA) or  
28VAC @ 10A (280VA).
- Eight (8) PTC Protected Outputs.



Rev. 121409



More than just power.™

## Overview:

WPTV248220 Series Outdoor CCTV Power Supplies provide 24VAC or 28VAC distributed via eight (8) outputs for powering CCTV cameras, heaters, and other video accessories.

### WPTV248220 Reference Chart:

Altronix Model Number	Total Output Current (Power)	Output Voltage	Number of Outputs	Fuse Protected Outputs	PTC Protected Outputs	220VAC 50/60Hz Input Current
WPTV248175220	7A	24VAC	8	✓	–	0.9A
	6.25A	28VAC				
WPTV248175CB220	7A	24VAC		–	✓	0.9A
	6.25A	28VAC				
WPTV248300220	12.5A	24VAC		✓	–	1.4A
	10A	28VAC				
WPTV248300CB220	12.5A	24VAC		–	✓	1.4A
	10A	28VAC				

## Specifications:

### Agency Listings:

- CE European Conformity

### Input:

- 220VAC, 50/60Hz.

### Output:

- Eight (8) fuse or PTC protected outputs.
- 24VAC or 28VAC supply current.
- Outputs are rated @ 3.5A (fused) or 2.5A (PTC).
- Main fuse is rated @ 15A/32V.
- Surge suppression.

### Visual Indicators:

- AC power LED.
- Illuminated power disconnect circuit breaker with manual reset.

### Features:

- Spare fuses provided (all models with primary and/or secondary fuses).
- Unit maintains camera synchronization.
- Ease of installation saves time and eliminates costly labor.

### Enclosure Dimensions (H x W x D approx.):

12" x 8" x 6" (304.8mm x 203.2mm x 152.4mm).

## Installation Instructions:

Unit should be installed in accordance with The National Electrical Code and all applicable Local Regulations.

1. Remove backplane inside the enclosure by removing four (4) mounting nuts (Fig. 2a, pg. 4).
2. Mark and drill desired knockouts on the enclosure to facilitate wiring (Fig. 3, pg. 5).
3. All units are factory set for 24VAC operation.

For 28VAC operation adjust unit prior to mounting and applying power as follows:  
Change the wire position so that the black wire [28V] is connected to the terminal marked [P] and the yellow wire [24V] is connected to the terminal marked [S].

4. Secure backplane inside the enclosure with four (4) mounting nuts (Fig. 2a, pg. 4).
5. Unit can be wall or pole mounted.

### Wall Mount:

- Mark and drill holes to line up with the top and bottom holes of the enclosure flange.
- Secure enclosure with appropriate fasteners (Fig. 4, pg. 6).

### Pole Mount:

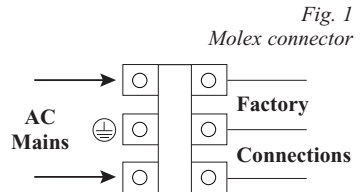
- Refer to the detailed pole mount instructions (pg. 6).

Secure enclosure to earth ground.

6. Set power switch to the OFF position (Fig. 2, pg. 4).
7. Secure AC power mains to the Molex connector (Fig. 1, pg. 2). Green wire is Ground ⊕, factory connected to the chassis. Use 18 AWG or larger for all power connections (AC output).
8. Set power switch to the RESET position (Fig. 2, pg. 4).
9. Measure output voltage at the terminals marked [1N, 1P] before connecting devices.

This helps avoiding potential damage.

**CAUTION: Determine the maximum operating voltage of the equipment being powered before adjusting the output voltage.**



10. Set power switch to the OFF position (*Fig. 2, pg. 4*).
  11. Connect devices to the terminals marked [1P - 1N] through [8P - 8N] on the board carefully observing correct polarity.  
**Note:** Power supplies mounted in outdoor enclosures should be derated by approximately 50% to account for the extreme environmental conditions.
  12. Set power switch to the RESET position (*Fig. 2, pg. 4*).
  13. Green LED will illuminate when unit is powered.
  14. Upon completion of the wiring, secure enclosure door by installing cam lock (supplied).
- CAUTION: Equipment to be installed / serviced by authorized / trained personnel only. Shut branch circuit power before installing / servicing equipment.**

**WARNING: This installation should be made by qualified service personnel. Unit should be installed in accordance with the National Electrical Codes and all local codes.**

### **Terminal Identification:**

#### ***PD8/PD8CB - Distribution Module***

<b>Terminal Legend</b>	<b>Function/Description</b>
1P - 8P	Positive AC output.
1N - 8N	Negative AC output.



The lightning flash with arrow head symbol within an equilateral triangle is intended to alert the user to the presence of an insulated DANGEROUS VOLTAGE within the product's enclosure that may be of sufficient magnitude to constitute an electric shock.



The exclamation point within an equilateral triangle is intended to alert the user to the presence of important operating and maintenance (servicing) instructions in the literature accompanying the appliance.



**CAUTION**  
**RISK OF ELECTRIC SHOCK**  
**DO NOT OPEN**



**CAUTION:** To reduce the risk of electric shock do not open enclosure. There are no user serviceable parts inside. Refer servicing to qualified service personnel.

Fig. 2

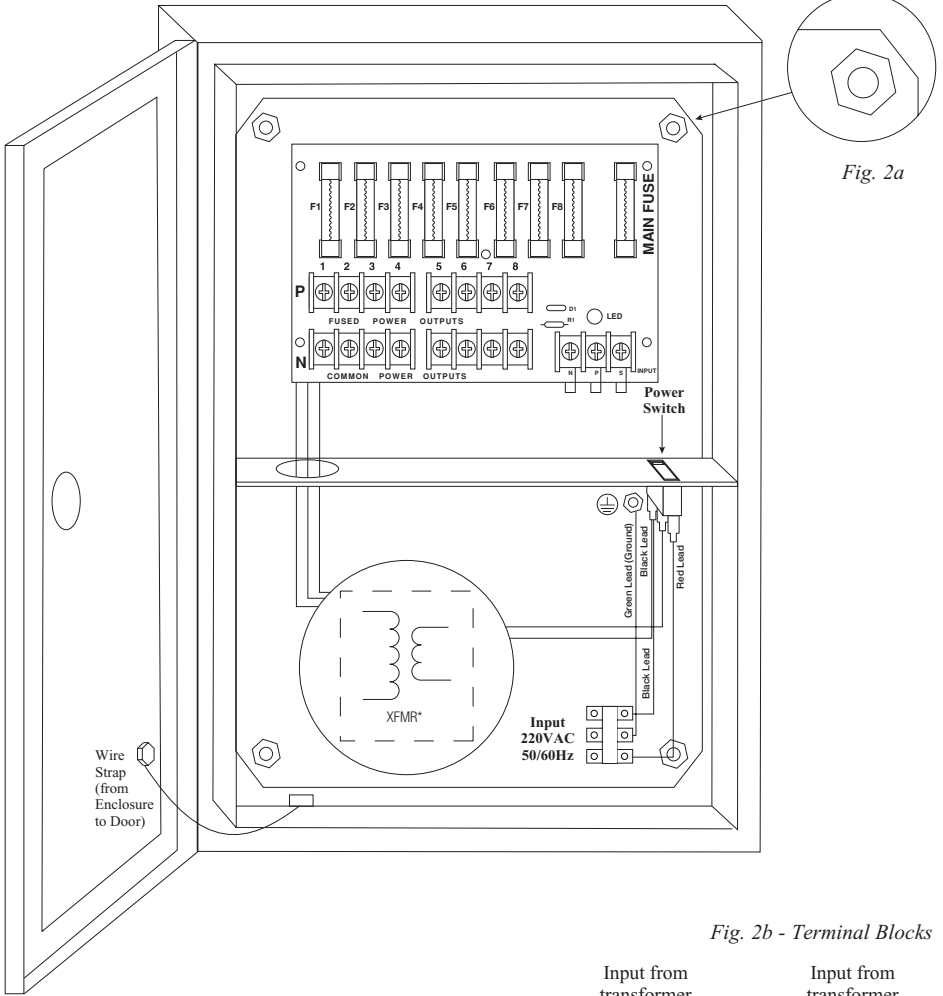
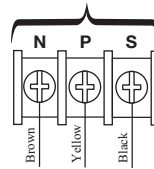


Fig. 2a

Fig. 2b - Terminal Blocks

Input from transformer.  
24VAC Configuration



Input from transformer.  
28VAC Configuration

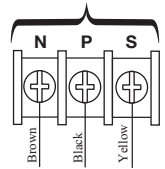
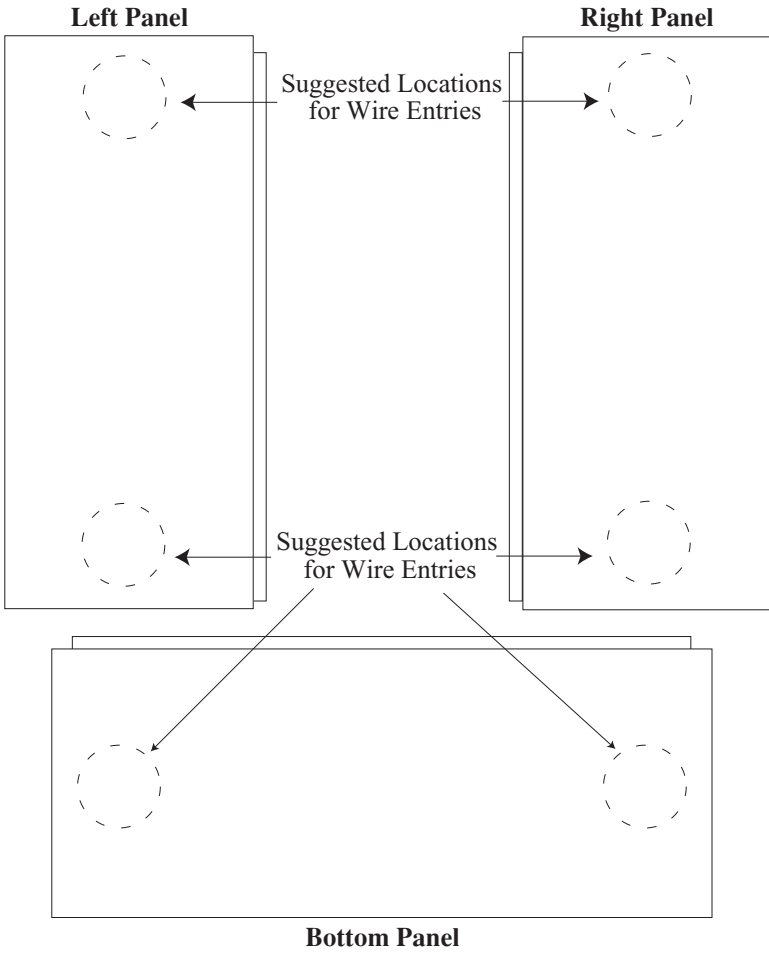


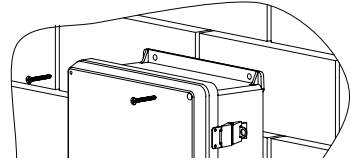
Fig. 3



## Wall Mount Installation

- 1- Place unit at desired location and secure with mounting screws (not included) (Fig. 4, pg. 6).

Fig. 4



## Pole Mounting Using Optional Pole Mount Kit PMK1 (not included):

This installation should be made by qualified service personnel. This product contains no serviceable parts. PMK1 is intended for use with Altronix outdoor rated power supplies or accessories housed in WP1, WP2, WP3 and WP4 enclosures. Brackets are designed for use with the Wormgear Quick Release Straps (two included).

1. Thread one (1) wormgear quick release strap through the slots on the back of a mounting bracket (Fig. 5, pg. 6).
2. Once the desired height of the top Pole Mount bracket is achieved, tighten the straps down by sliding open end of the strap through the locking mechanism on the strap, then tighten the screw with flat head screwdriver or 5/16" hex socket driver (Fig. 6, pg. 6 and Fig. 8, pg. 6).

Fig. 5

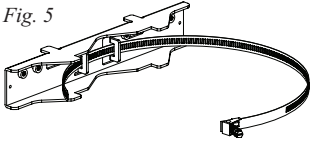


Fig. 6

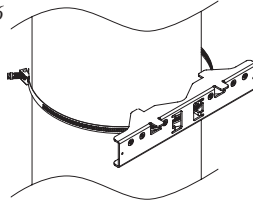
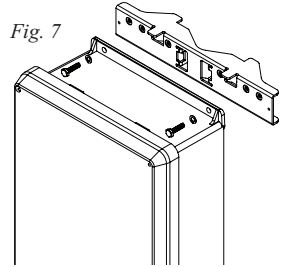


Fig. 7



3. Attach the bottom bracket to the enclosure by inserting bolts through the flange of the enclosure and into the bracket, tightening bolts with a 7/16" hex socket (Fig. 7, pg. 6).
4. Thread the second wormgear quick release strap through the slots on the back of the bottom mounting bracket (Fig. 5, pg. 6).
5. Mount enclosure onto the top bracket by inserting bolts through flange of the enclosure and into the bracket, tightening bolts with a 7/16" hex socket (Fig. 7, pg. 6).
6. Tighten the straps of the bottom bracket down by sliding the open end of the strap through the locking mechanism on the strap, then tighten screw with flat head screwdriver or 5/16" hex socket driver (Fig. 5, pg. 6).
7. Clip excess straps.

Fig. 8

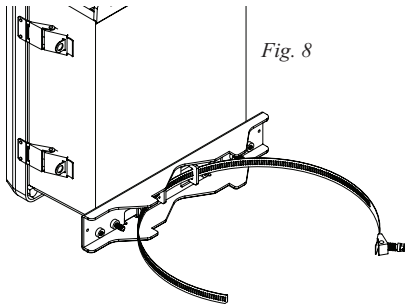


Fig. 9  
2" to 8" (50.8mm to 203.2mm)  
diameter round pole

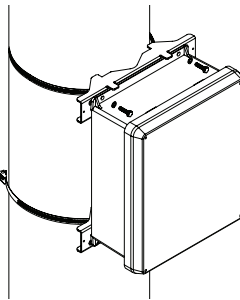
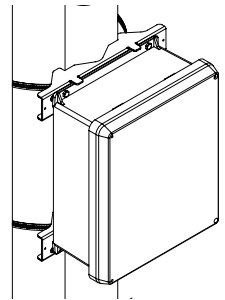


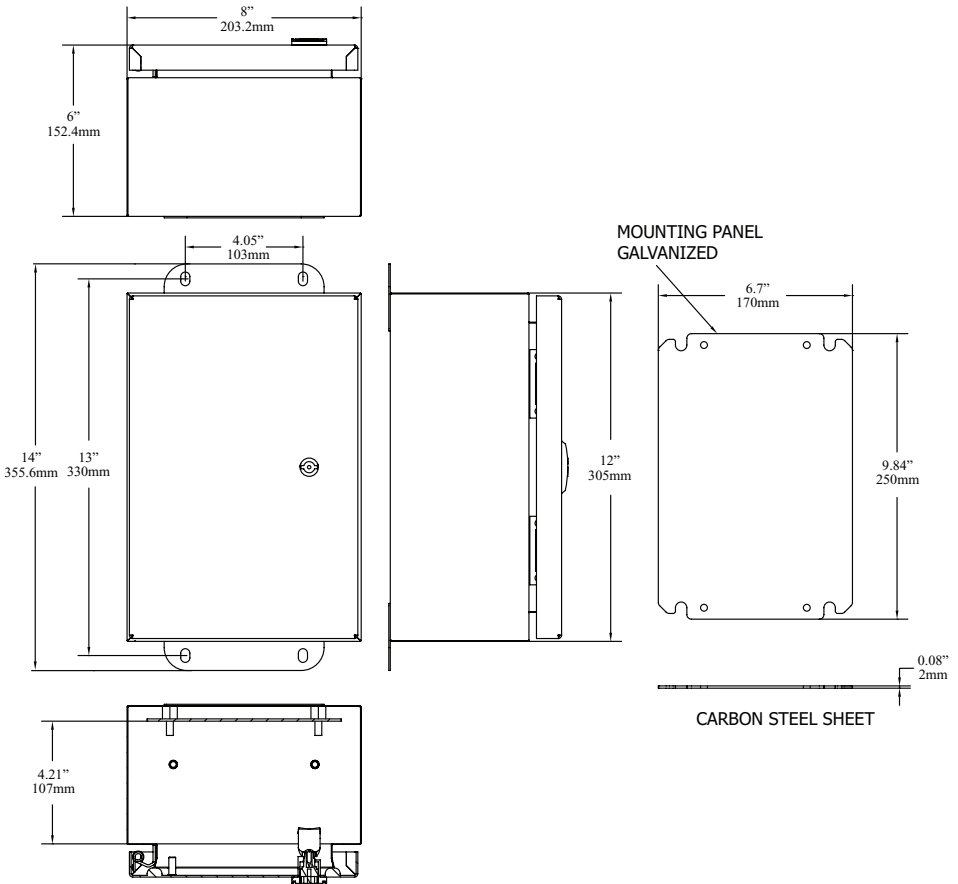
Fig. 9a  
5" (127mm) square pole



**Notes:**

# Enclosure Dimensions (H x W x D approximate):

12" x 8" x 6" (304.8mm x 203.2mm x 152.4mm)



Altronix is not responsible for any typographical errors.

140 58th Street, Brooklyn, New York 11220 USA | phone: 718-567-8181 | fax: 718-567-9056  
website: [www.altronix.com](http://www.altronix.com) | e-mail: [info@altronix.com](mailto:info@altronix.com) | Lifetime Warranty | Made in U.S.A.  
HWPTV248220 Series 112R

