

WPTV248UL Series

CCTV Outdoor Power Supplies

Models Include:

WPTV248UL

- 24VAC @ 3.5A (85VA) or 28VAC @ 3A (85VA).
- Eight (8) Fuse Protected Outputs.

WPTV248175UL

- 24VAC @ 7A (175VA) or 28VAC @ 6.25A (175VA).
- Eight (8) Protected Outputs.

WPTV248300UL

- 24VAC @ 12.5A (300VA) or 28VAC @ 10A (280VA).
- Eight (8) Protected Outputs.

WPTV248ULCB

- 24VAC @ 3.5A (85VA) or 28VAC @ 3A (85VA).
- Eight (8) PTC Protected Outputs.

WPTV248175ULCB

- 24VAC @ 7A (175VA) or 28VAC @ 6.25A (175VA).
- Eight (8) PTC Protected Outputs.

WPTV248300ULCB

- 24VAC @ 12.5A (300VA) or 28VAC @ 10A (280VA).
- Eight (8) PTC Protected Outputs.

Installation Guide



Rev. 040506

Installing Company: _____ Service Rep. Name: _____

Address: _____ Phone #: _____





More than just power.™

Overview:

WPTV248UL Series outdoor CCTV Power Supplies provide power via eight (8) fused or PTC protected outputs for CCTV Cameras, heaters, and other video accessories.

Units are UL Listed UL 2044 “U.S. and Canada for CCTV Equipment.”

Eight (8) Output WPTV Reference Chart:

Altronix Model Number	Output Voltage	Total Output Current (Power)	Number of Outputs	PTC Protected Outputs (Class 2 power-limited for Dry locations, Class 3 for Wet locations).	Fuse Protected Outputs	Individual Output Current (max per output - not to exceed total output current)	Fuse Ratings	Main Fuse Ratings	Primary In-line Fuse Ratings	115VAC 50/60Hz Input Current	Agency Listings
WPTV248UL	24VAC	3.5A	8	-	✓	3.5A	3.5A	5A/250V	3.5A/250V	0.9A	 
	28VAC	3A									
WPTV248ULCB	24VAC	3.5A	8	✓	-	2.5A	-	5A/250V	3.5A/250V	0.9A	
	28VAC	3A									
WPTV248175UL	24VAC	7A	8	-	✓	3.5A	3.5A	10A/250V	-	1.76A	
	28VAC	6.25A									
WPTV248175ULCB	24VAC	7A	8	✓	-	2.5A	-	10A/250V	-	1.76A	
	28VAC	6.25A									
WPTV248300UL	24VAC	12.5A	8	-	✓	3.5A	3.5A	15A/32V	-	2.7A	
	28VAC	10A									
WPTV248300ULCB	24VAC	12.5A	8	✓	-	2.5A	-	15A/32V	-	2.7A	
	28VAC	10A									

Specifications:

Agency Listings:

- UL Listed for Commercial CCTV Equipment (UL2044).
- cUL Listed - CSA Standard C22.2 No.1-98, Audio, Video and Similar Equipment.
- CE European Conformity

Input:

- 115VAC, 50/60Hz.

Output:

- Eight (8) fuse or PTC protected outputs.
- 24VAC or 28VAC.
- Outputs are rated @ 3.5A (fused) or 2.5A (PTC).
- Surge suppression.

Features:

- Secondary fuse rated @ 5A/250V.
- AC power LED.
- Unit maintains camera synchronization.
- Ease of installation saves time & eliminates costly labor.
- Spare fuses provided. (all models w/primary and/or secondary fuses).
- NEMA 4 Rated enclosure for outdoor use.

Enclosure Dimensions (H x W x D approx.):

12" x 8" x 6" (304.8mm x 203.2mm x 152.4mm).

Installation Instructions:

Unit should be installed in accordance with The National Electrical Code and all applicable Local Regulations.

1. Remove back plate inside the enclosure by removing four (4) mounting screws (*Figs. 2a-7a, pgs. 5-10*).
2. Mark and drill desired knockouts on the enclosure to facilitate wiring. For suggested wire entry locations refer to *Fig. 1, pg. 4*. Use weather tight NEMA 4 rated connectors, bushings, and cables.
3. Unit can be wall or pole mounted.

Wall Mount:

- Mark and drill holes to line up with the top and bottom holes of the enclosure flange.
- Secure enclosure with appropriate fasteners (*Fig. 9 and Fig. 9a, pg. 11*).

Pole Mount:

- Refer to the detailed pole mount instructions (*pg. 11*).

Secure enclosure to earth ground.

4. Set power switch on power distribution board marked [PD] to OFF position for models WPTV248UL or WPTV248ULCB (*Figs. 2b, 3b, pgs. 5, 6*). Set power disconnect circuit breaker to OFF position for all other models (*Figs. 4b-7b, pgs. 7-10*).
5. All units are factory set for 24VAC operation.

For 28VAC operation adjust unit prior to mounting and applying power as follows:

Change the wire position so that the black wire [28V] is connected to the terminal marked [P] and the yellow wire [24V] is connected to the terminal marked [S].

Note: WPTV248ULCB set for 28VAC operation is not Class 2, not power-limited.

6. Place back plate with all internal parts, using four (4) screws, back into WP enclosure (*Figs. 2a-7a, pgs. 5-10*).
7. Connect AC power to the black and white flying leads of the transformer(s) (*Figs. 2-7, pgs. 5-10*), secure green lead to earth ground. Use 18 AWG or larger for all power connections.

Keep power-limited (PTC protected outputs only) wiring separate from non power-limited wiring. Minimum 0.25" spacing must be provided. Use separate entries.

8. Set power switch on power distribution board marked [PD] to ON position for models WPTV248UL or WPTV248ULCB (*Figs. 2b, 3b, pgs. 5, 6*). Set power disconnect circuit breaker to ON position for all other models (*Figs. 4b-7b, pgs. 7-10*).
9. Measure output voltage before connecting devices. This helps avoiding potential damage. Terminals marked [1P - 8P] are of the same polarity.

CAUTION: Determine the maximum operating voltage of the equipment being powered before adjusting the output voltage.

10. Set power switch on power distribution board marked [PD] to OFF position for models WPTV248UL or WPTV248ULCB (*Figs. 2b, 3b, pgs. 5, 6*). Set power disconnect circuit breaker to OFF position for all other models (*Figs. 4b-7b, pgs. 7-10*).
11. Connect devices to terminals marked [1P - 1N] through [8P - 8N] on PD8/PD8CB board (*Figs. 2-7, pgs. 5-10*), carefully observing polarity.
12. Set power switch on power distribution board marked [PD] to ON position for models WPTV248UL or WPTV248ULCB (*Figs. 2b, 3b, pgs. 5, 6*). Set power disconnect circuit breaker to ON position for all other models (*Figs. 4b-7b, pgs. 7-10*).
13. Green LED will illuminate when power is present.
14. Upon completion of wiring, secure enclosure door with the cam lock (supplied).
Caution: Equipment to be installed/serviced by authorized/trained personnel only.
Shut branch circuit power before installing/servicing equipment.

WARNING: This installation should be made by qualified service personnel. Unit should be installed in accordance with the National Electrical Codes and all local codes. For continued protection against risk of fire replace all fuses only with the same type and rating (3.5A/250VAC).

Terminal Identification:

PD8 - Power Distribution Module

Terminal Legend	Function/Description
1P - 8P	AC output.
1N - 8N	AC output.



The lightning flash with arrowhead symbol within an equilateral triangle is intended to alert the user to the presence of an insulated DANGEROUS VOLTAGE within the product's enclosure that may be of sufficient magnitude to constitute an electric shock.



The exclamation point within an equilateral triangle is intended to alert the user to the presence of important operating and maintenance (servicing) instructions in the literature accompanying the appliance.



CAUTION
RISK OF ELECTRIC SHOCK
DO NOT OPEN



CAUTION: To reduce the risk of electric shock do not open enclosure. There are no user serviceable parts inside. Refer servicing to qualified service personnel.

Fig. 1

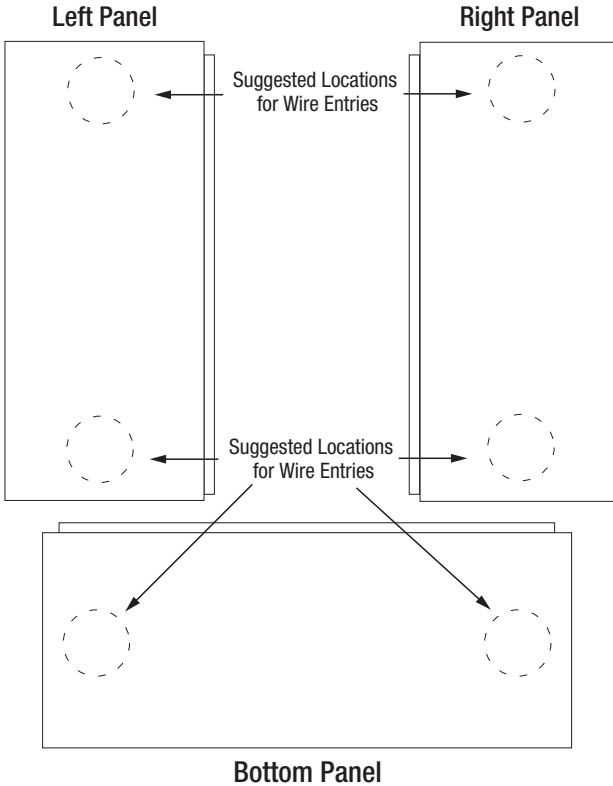
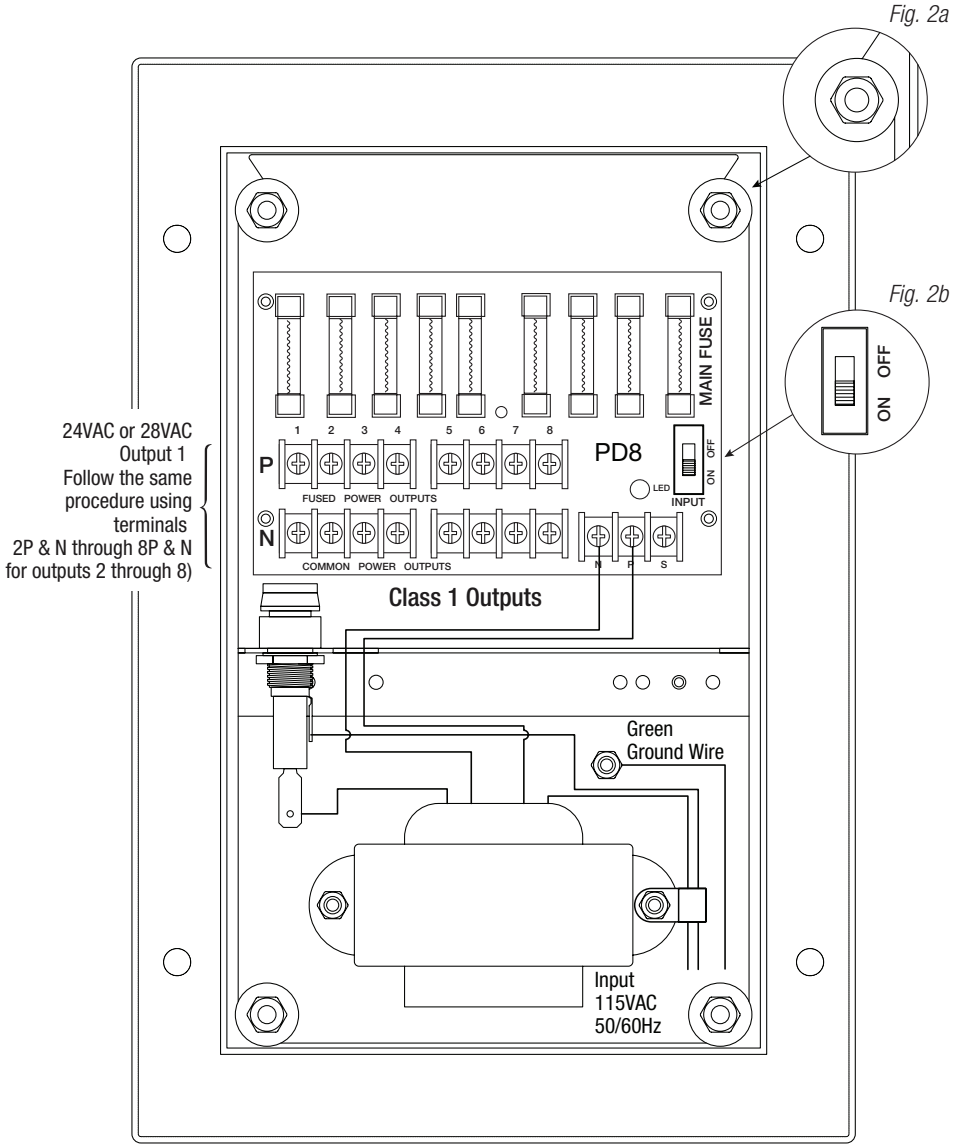
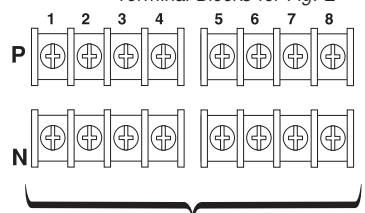


Fig. 2 - WPTV248UL



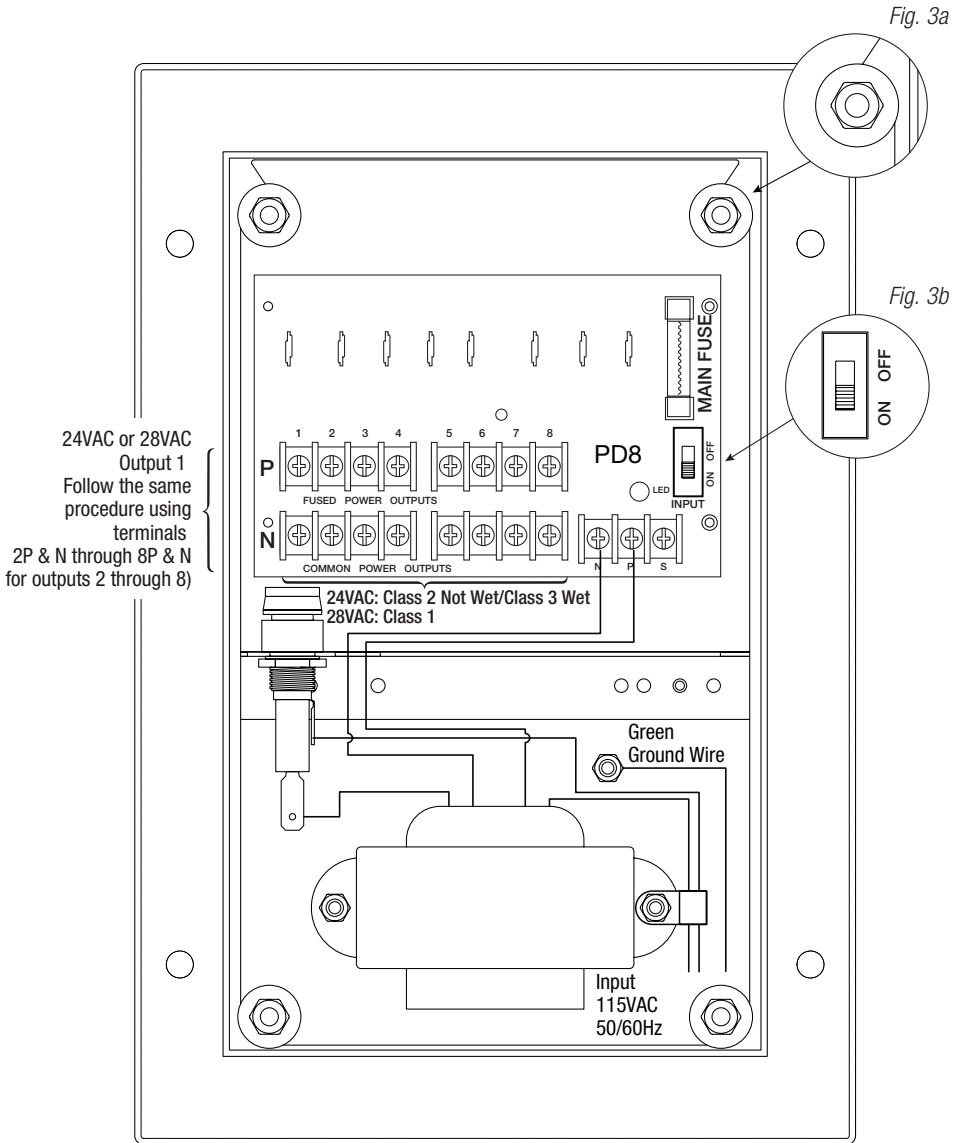
24VAC or 28VAC
Output 1
Follow the same
procedure using
terminals
2P & N through 8P & N
for outputs 2 through 8)

Terminal Blocks for Fig. 2

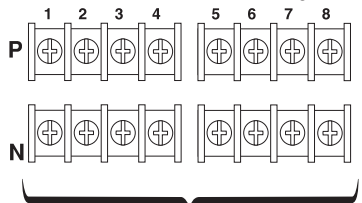


24VAC or 28VAC
fused or PTC protected outputs
1 through 8.

Fig. 3 - WPTV248ULCB



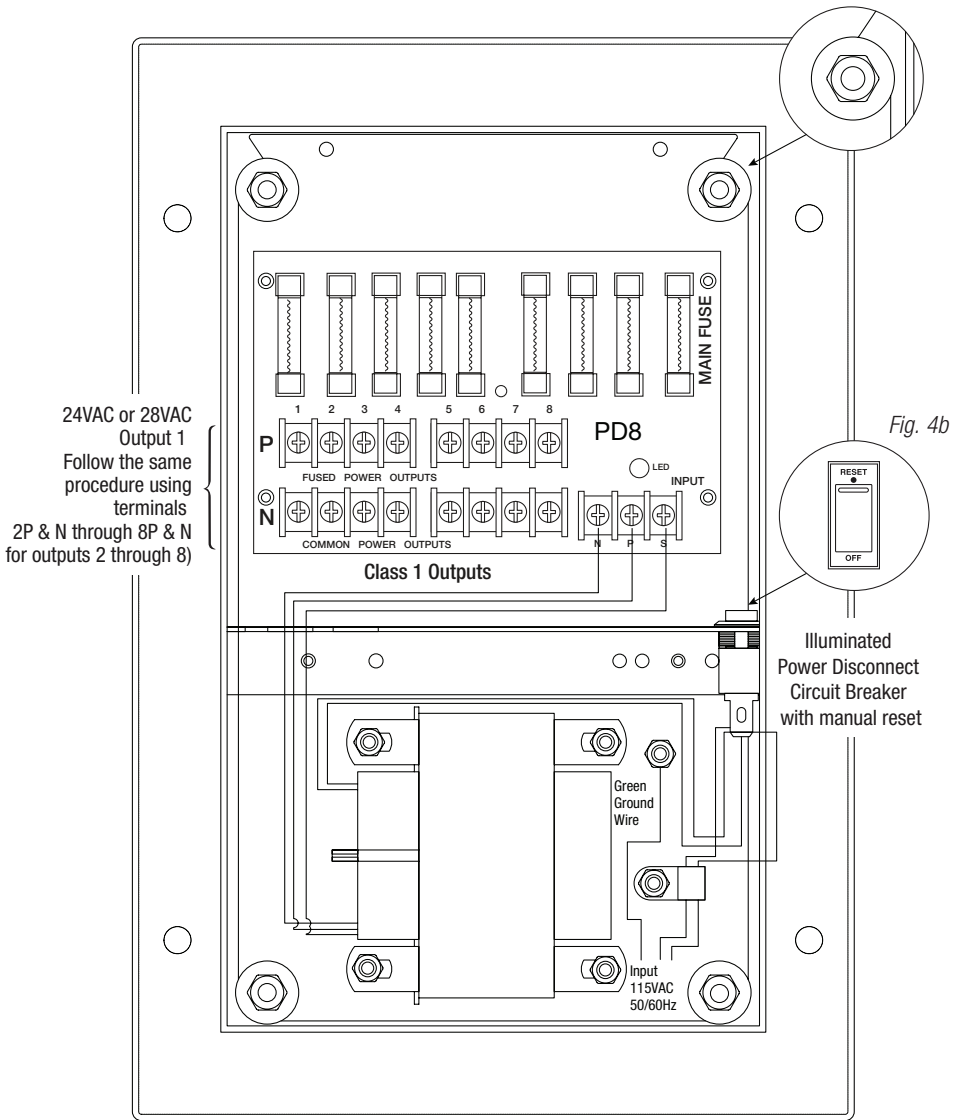
Terminal Blocks for Fig. 3



24VAC or 28VAC
fused or PTC protected outputs
1 through 8.

Fig. 4 - WPTV248175UL

Fig. 4a



Terminal Blocks for Fig. 4

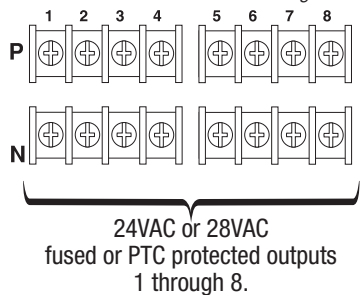
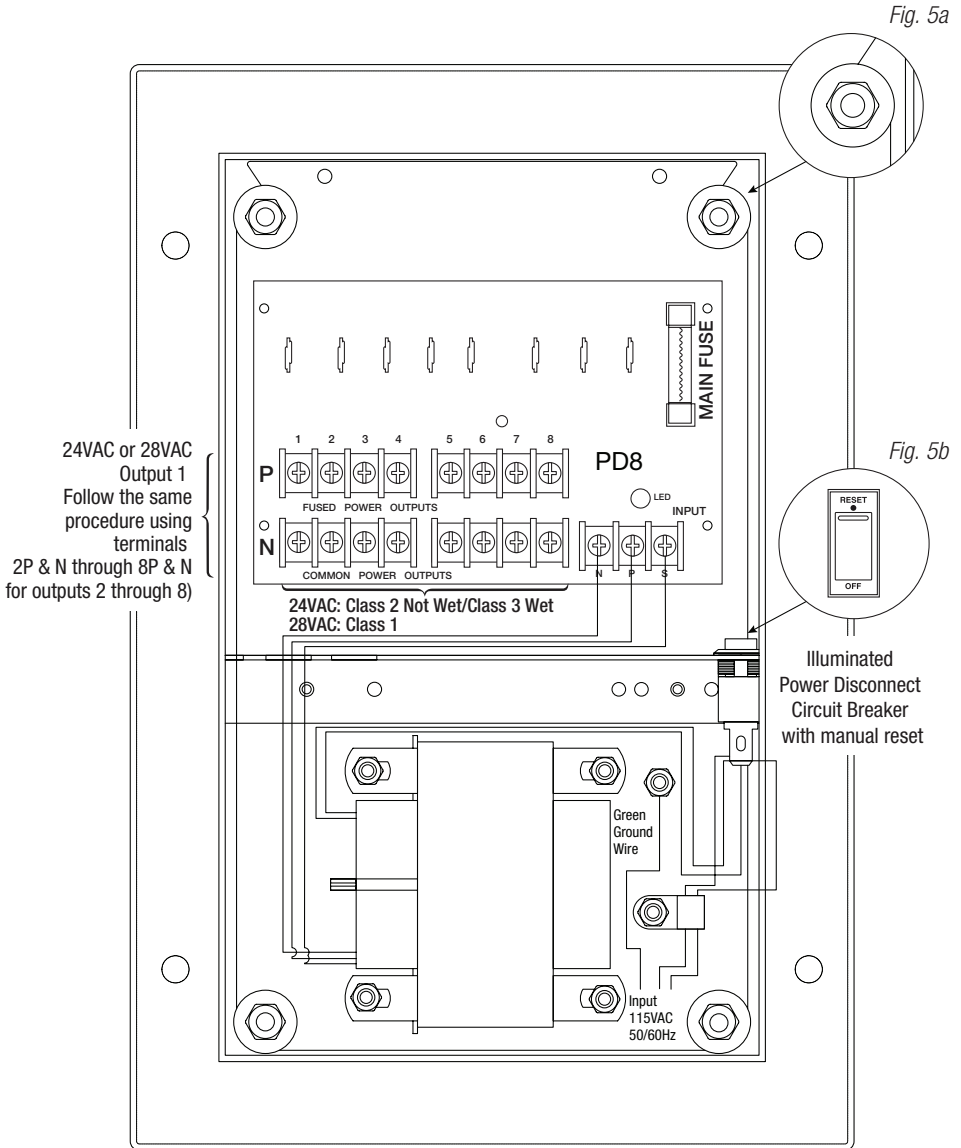


Fig. 5 - WPTV248175ULCB



Terminal Blocks for Fig. 5

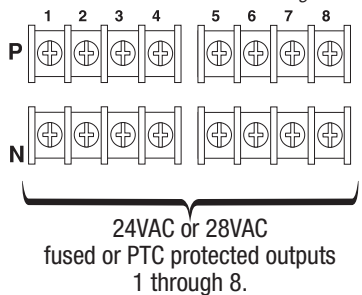
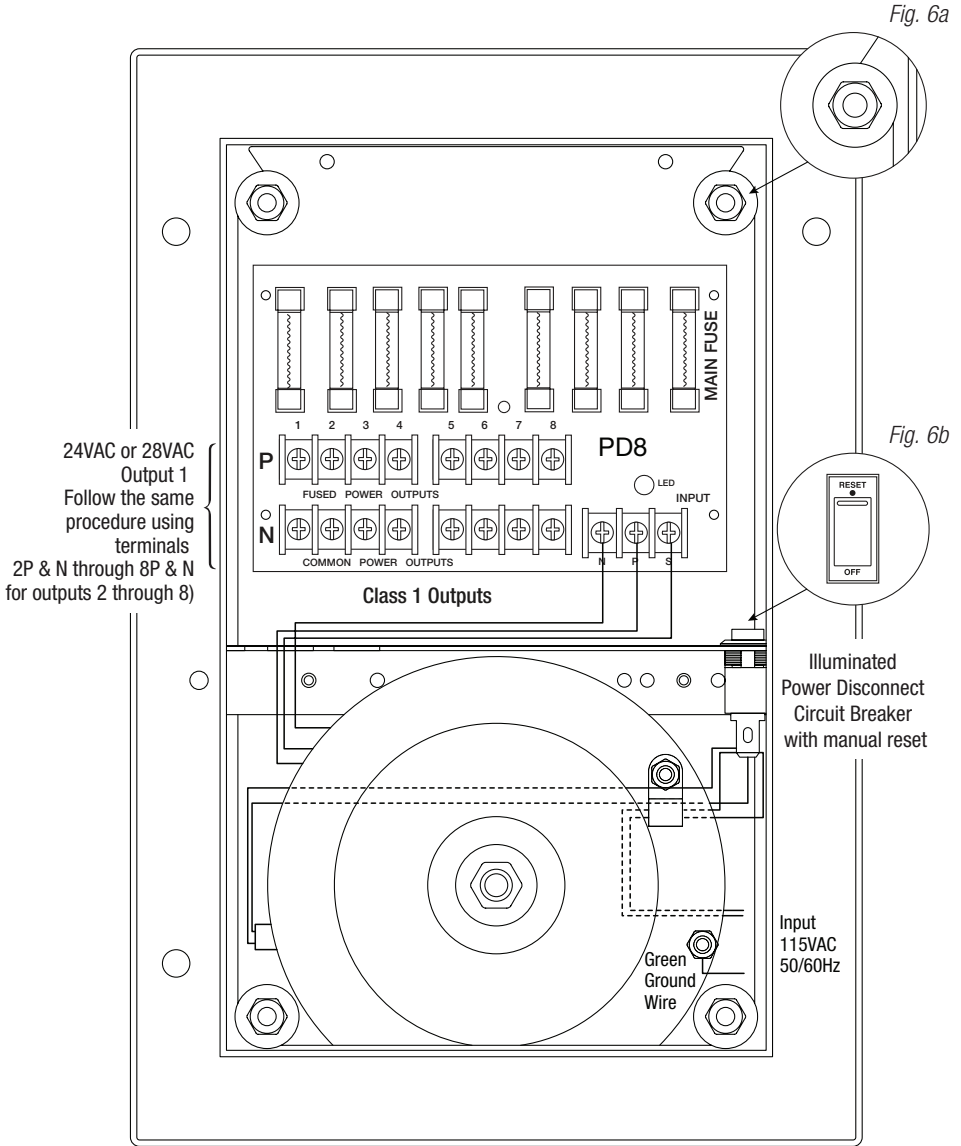
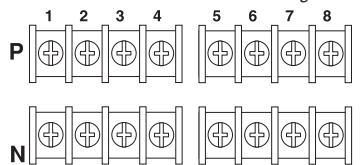


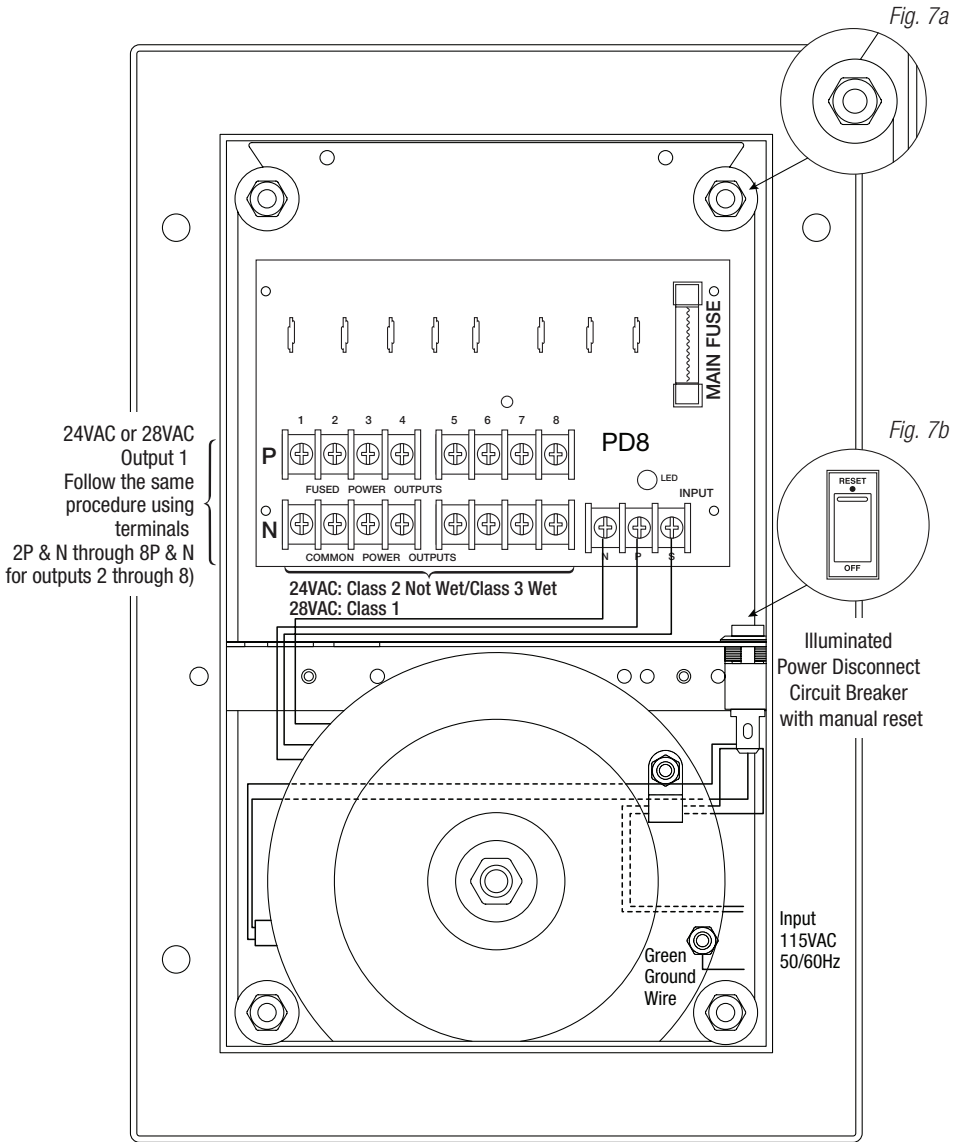
Fig. 6 - WPTV248300UL



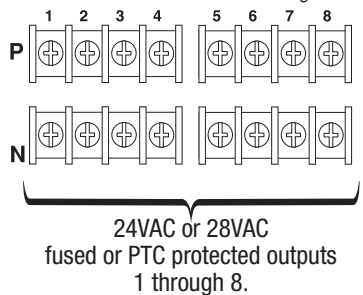
Terminal Blocks for Fig. 6



24VAC or 28VAC
 fused or PTC protected outputs
 1 through 8.



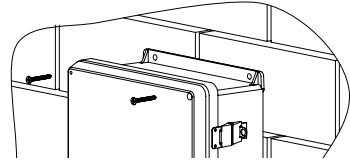
Terminal Blocks for Fig. 7



Wall Mount Installation

1. Place unit at desired location and secure with mounting screws (*not included*) (Fig. 8, pg. 11).

Fig. 8



Pole Mounting Using Optional Pole Mount Kit PMK1 (not included):

This installation should be made by qualified service personnel. This product contains no serviceable parts. PMK1 is intended for use with Altronix outdoor rated power supplies or accessories housed in WP1, WP2, WP3 and WP4 enclosures. Brackets are designed for use with the Wormgear Quick Release Straps (two included).

1. Thread one (1) wormgear quick release strap through the slots on the back of a mounting bracket (Fig. 5, pg. 11).
2. Once the desired height of the top Pole Mount bracket is achieved, tighten the straps down by sliding open end of the strap through the locking mechanism on the strap, then tighten the screw with flat head screwdriver or 5/16" hex socket driver (Fig. 10, pg. 11 and Fig. 12, pg. 11).

Fig. 9

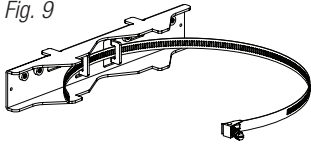


Fig. 10

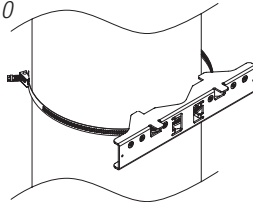
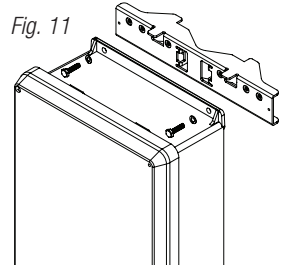


Fig. 11



3. Attach the bottom bracket to the enclosure by inserting bolts through the flange of the enclosure and into the bracket, tightening bolts with a 7/16" hex socket (Fig. 11, pg. 11).
4. Thread the second wormgear quick release strap through the slots on the back of the bottom mounting bracket (Fig. 9, pg. 11).
5. Mount enclosure onto the top bracket by inserting bolts through flange of the enclosure and into the bracket, tightening bolts with a 7/16" hex socket (Fig. 11, pg. 11).
6. Tighten the straps of the bottom bracket down by sliding the open end of the strap through the locking mechanism on the strap, then tighten screw with flat head screwdriver or 5/16" hex socket driver (Fig. 9, pg. 1).
7. Clip excess straps.

Fig. 12

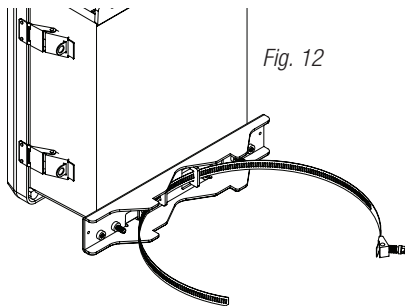


Fig. 13
2" to 8" (50.8mm to 203.2mm)
diameter round pole

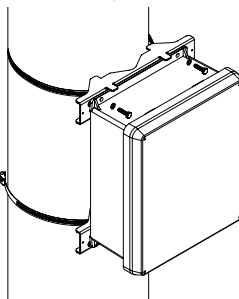
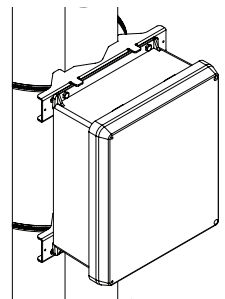
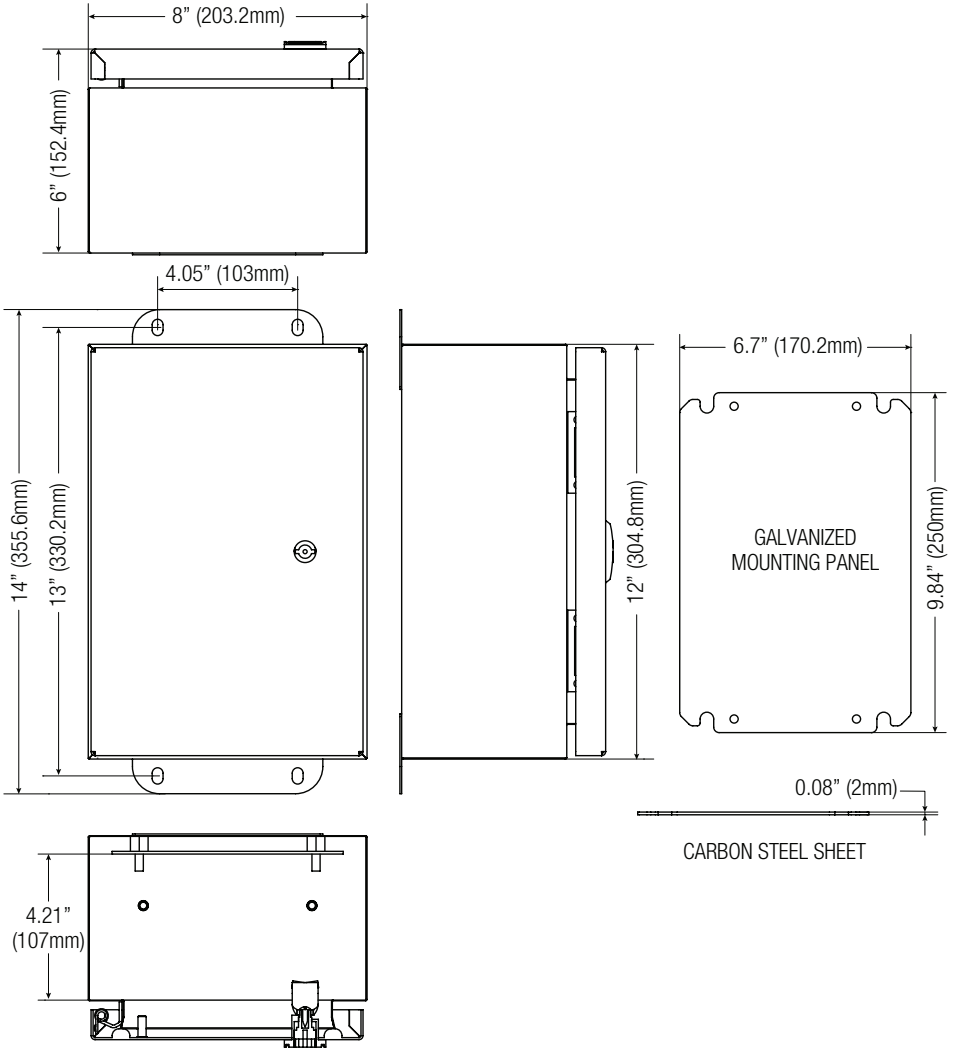


Fig. 13a
5" (127mm) square pole



Enclosure Dimensions (H x W x D approximate):

12" x 8" x 6" (304.8mm x 203.2mm x 152.4mm)



Altronix is not responsible for any typographical errors.

140 58th Street, Brooklyn, New York 11220 USA | phone: 718-567-8181 | fax: 718-567-9056
website: www.altronix.com | e-mail: info@altronix.com | Lifetime Warranty
IIWPTV248UL Series H2OU

